

Nikolay[®]



2025
GARMENTS

RADI- ANCE

INTRODUCING THE RADIANCE COLLECTION 2025

Step into a realm of elegance and enchantment with our breathtaking Radiance collection, where each design serves as a canvas, inspiring and elevating your dance journey. This extraordinary collection features four exquisite groups of leotards and matching men's garments, beautifully complemented by a stunning range of sewn knitwear crafted from the softest cashmere-like acrylic material, showcasing an innovative 3D design.



CONCENTRATE ON THE MAIN THING

WE CAREFULLY CONTROL OUR PRODUCTION TO MAKE YOUR GARMENT FEEL LIKE SECOND SKIN – BECAUSE WHEN YOU FEEL COMFORTABLE, YOU CAN CONCENTRATE ON THE MAIN THING – DANCE

The best Italian polyamide micro only

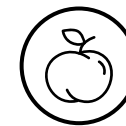
The supplier of the fabrics we use has a certificate, approving its quality. **STANDARD 100** by **OEKO-TEX®** is one of the world's best-known labels for textiles tested for harmful substances. It stands for customer confidence and high product safety. If a textile article carries the **STANDARD 100** label, you can be certain that every thread has been tested for harmful substances and that the article, therefore, is harmless for human health.



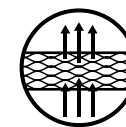
MATERIAL FEATURES OF NIKOLAY® GARMENT



We source the best existing high-tech and soft materials available for sportswear that guarantee comfort during any movements



Super soft like a peach brushed microfiber makes our garments feel like second skin



Polyamide micro – hi-tech breathable material



Easily absorbs moisture and looks good even when it's a bit damp



Fast-drying and breathable, thus extremely comfortable



UPF 50+ allows one to wear the garment during outdoor classes without worry



Special bi-stretch technology helps you to feel free during stretching and active exercises



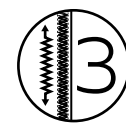
Keeps its form and doesn't lose shape after multiple washings



Fade resistant. Colors remain bright after a large number of washes



CAREFUL PRODUCTION FOR YOUR CONFIDENCE



We use three different types of thread to answer stretching properties of the materials



We pay attention to the end of each seam by securing it. This guarantees longer lifespan for your garment

LINING

All our leotards are fully front lined to give dancers confidence that nothing is visible from under the garment.



Beige lining for color leotards



White — for white leotards



Black — for black leotards

POCKETS FOR CUPS

Some ballerinas prefer using cups, while others — don't. We made pockets, so there's always the possibility of changing cups, adding them, or removing them when needed. Please, note: we do not sell bra cups so you will need to buy them separately.



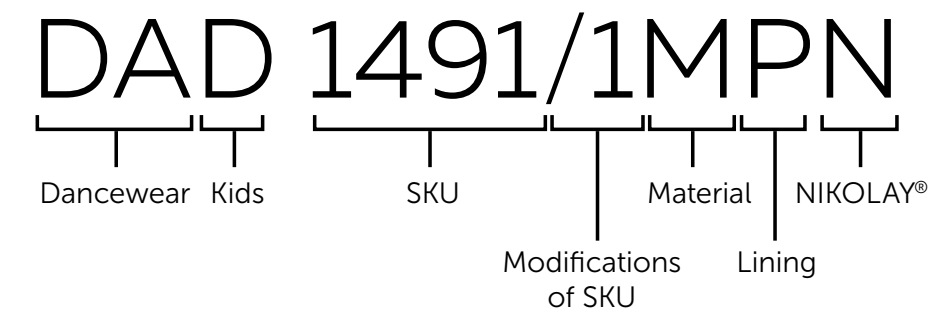
CONSIDERING ANATOMY

NIKOLAY® Men's styles are specifically made for the male dancer. They are all designed and cut to enhance the masculine physique.

We always use danseurs for our fit models.



ARTICLE CODE



DA — for direction "Dancewear"

Added letter **D** — Kids size

Numbers — Stock Keeping Unit

Numbers after the slash / — additional options to the model

Letter after style number:

C — Cotton

M — Polyamide micro

L — Nylon

V — Velour (usually additional material)

P — Lining

CP — Cotton with lining

MP — Polyamide micro with lining

LP — Nylon with lining

LUMI- NOUS MIRAGE



In this group, you're invited to experience the magic of a delicate mesh overlay that gently drapes over nude lining, creating a mesmerizing illusion of color and movement. Each piece radiates a dreamy quality, reminiscent of a twilight sky where delicate hues blend seamlessly. As you dance, imagine yourself gliding through an ethereal landscape, where light and shadow weave together, offering glimpses of color that captivate the heart and soul.



DA5000/1MPN Tanya
Camisole leotard
Black Mesh/Tiffany

Tatiana

Camisole leotard

Introducing a unique leotard that elevates your dance wardrobe! Made from luxurious Italian four-way stretch mesh over nude microfiber, it offers elegance and fluidity. Adjustable camisole straps ensure a tailored fit, while Nikolay's signature hip line strings add flair. The ballet leg line elongates your figure, making every movement graceful. Embrace your creativity and stand out in this enchanting leotard, perfect for the studio and stage!



Youth sizes

DAD5000MPN Little Tatiana

Sizing by age	10-11 Y	12-13 Y
Size RU	36	38

Adult sizes

DA5000MPN Tatiana

International size	XXS	XS	S	M	L	XL
Size RU	40	42	44	46	48	50

Material: 80% polyamide micro, 20% elastane

All sizes with lining

- Tiffany
- Poppy
- Malachite
- Dark Blue
- Mother of Pearl
- Black



Tiffany



Malachite

Tanya

Camisole leotard

Meet the "Tanya" leotard, a stylish update to our classic Tatiana design, featuring chic two-tone colors. Adjustable camisole straps provide a tailored fit, while the signature hip cinch detail flatters your silhouette. Available in three vibrant palettes, this leotard combines sophistication and function, enhancing your movements with style and grace. Perfect for both stage and studio, Tanya is the ideal blend of beauty and performance for every dancer.



Youth sizes

DAD5000/1MPN Little Tanya

Sizing by age	10-11 Y	12-13 Y
Size RU	36	38

Adult sizes

DA5000/1MPN Tanya

International size	XXS	XS	S	M	L	XL
Size RU	40	42	44	46	48	50

Material: 80% polyamide micro, 20% elastane

All sizes with lining

- ● Black Mesh/Tiffany
- ● Black Mesh/Lilac
- ● Black Mesh/Poppy



Black Mesh/Lilac



Black Mesh/Lilac



DA5001MPN Taryn
Tank style leotard
Mother of Pearl

Taryn

Tank style leotard

Experience elegance and innovation with this stunning tank leotard, featuring a rounded sweetheart neckline and angled seaming for an eye-catching silhouette. The diamond-shaped back detail accentuates the waist, while the open mesh upper adds a modern touch. Perfect for dancers seeking a blend of structure and grace, this leotard elevates any performance with its unique style and artistry.



Youth sizes

DAD5001MPN Little Taryn

Sizing by age	10-11 Y	12-13 Y
Size RU	36	38

Adult sizes

DA5001MPN Taryn

International size	XXS	XS	S	M	L	XL
Size RU	40	42	44	46	48	50

Material: 80% polyamide micro, 20% elastane

All sizes with lining and pockets for cups

- Tiffany
- Poppy
- Malachite
- Black
- Mother of Pearl



Tiffany

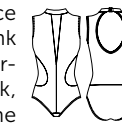


Poppy

Tallulah

High neck leotard

Unleash your athletic elegance with this fierce high-neck tank leotard, designed for powerful, refined movement. A sleek, deep-lined insert runs down the front for a bold, streamlined effect. The back features a delicate keyhole detail framed by elegant mesh, creating flowing lines. With its perfect blend of bold design and sophistication, this leotard is ideal for dancers ready to make a statement on stage or in class.



Youth sizes

DAD5002MPN Little Tallulah

Sizing by age	10-11 Y	12-13 Y
Size RU	36	38

Adult sizes

DA5002MPN Tallulah

International size	XXS	XS	S	M	L	XL
Size RU	40	42	44	46	48	50

Material: 80% polyamide micro, 20% elastane

All sizes with lining and pockets for cups

- Tiffany
- Poppy
- Tea Rosa
- Malachite
- Dark Blue
- Lilac
- Mother of Pearl
- Black



Malachite



Tea Rosa



DA5003MPN Tara
Long sleeve leotard
Black

DA5054MN Tatum
Tank unitard
Black

Tara

Long sleeve leotard

Redefine elegance with this opulent long-sleeve leotard, designed for breathtaking movement. The graceful boatneck frames your neckline, while a full nude lining beneath luxurious mesh ensures a seamless look. Transitioning to majestic microfiber at the waist, it highlights your silhouette with timeless beauty. The four-way stretch mesh sleeves and low back treatment add a modern twist to this regal piece, perfect for refined dancers who appreciate both style and grace.



Youth sizes

DA5003MPN Little Tara

Sizing by age	10-11 Y	12-13 Y
Size RU	36	38

Adult sizes

DA5003MPN Tara

International size	XXS	XS	S	M	L	XL
Size RU	40	42	44	46	48	50

Material: 80% polyamide micro, 20% elastane

All sizes with lining

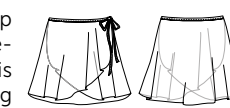
- Tiffany
- Dark Blue
- Tea Rosa
- Black
- Lilac



Tai

Mesh skirt

The classic wrap skirt, with its graceful stretch ties, is the perfect finishing touch to any ballet ensemble. Crafted from our durable yet delicately flowing stretch mesh, this skirt drapes elegantly, offering just the right amount of coverage with 16 inches in the back and 13 inches at the center front. The versatile length and timeless design enhance the movement and silhouette of any leotard, making this skirt an essential accessory for dancers who want to elevate their look with ease and style.



06017/1N Tai

- XS – 30 cm
- S – 32 cm
- M – 40 cm
- L – 48 cm
- XL – 55 cm

Material: 93% polyamide, 7% elastane

- Tiffany
- Poppy
- Tea Rosa
- Malachite
- Dark Blue
- Lilac
- Mother of Pearl
- Black





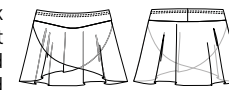
DA5005MPN Trista
Camisole leotard
Malachite

DA5004MN Talia
Skirt
Malachite

Tabitha

Mesh skirt

Our updated mock wrap pull-on skirt is the perfect blend of elegance and comfort. The 1.5-inch fabric waistband sits gracefully atop an A-line cut that flows beautifully as you move. Crafted from stretch mesh, this skirt drapes effortlessly to create a flattering silhouette, with 11 inches at the center front and 14 inches at the back for full coverage. It's a stunning complement to any dance attire, offering a touch of sophistication and effortless style that enhances every performance.



Youth sizes

DAD1945N Little Tabitha

Sizing by age	10–11 Y	12–13 Y
Size RU	36	38

Adult sizes

DA1945N Tabitha

International size	XXS	XS	S	M	L	XL
Size RU	40	42	44	46	48	50

Material: 93% polyamide, 7% elastane

- Tiffany
- Malachite
- Mother of Pearl
- Poppy
- Dark Blue
- Black
- Tea Rosa
- Lilac



Tiffany



Tea Rosa

Talia

Skirt

Slip into sophistication with this sleek pull-on skirt, measuring 11 inches at the front and 13 inches at the back. Crafted from luxurious Italian microfiber, it offers a smooth, elegant feel that moves beautifully with you. The 1.5-inch waistband provides a secure fit, while side slits extend halfway up for an enchanting drape and an unmatched twirl factor. This stylish and modern design is the perfect finishing touch to any dance-wear collection, enhancing your movement with grace and flair.



Youth sizes

DAD5004MN Little Talia

Sizing by age	10–11 Y	12–13 Y
Size RU	36	38

Adult sizes

DA5004MN Talia

International size	XXS	XS	S	M	L	XL
Size RU	40	42	44	46	48	50

Material: 80% polyamide micro, 20% elastane

- Tiffany
- Malachite
- Mother of Pearl
- Poppy
- Dark Blue
- Black
- Tea Rosa
- Lilac



Dark Blue



Poppy

VELVET SERE- NITY



Here, luxurious Italian microfiber embraces sumptuous velour, offering rich textures that feel as wonderful as they look. Each garment whispers elegance, beckoning you to envelop yourself in the allure of softness. Picture a tranquil garden at dawn, where soft petals unfurl and gentle breezes dance around you. This collection embodies the peaceful serenity of nature, inviting you to move with grace and confidence.



DA5005MPN Trista
Camisole leotard
Poppy and Black

DA5004MN Talia
Skirt
Poppy and Black

Trista

Camisole leotard

Meet the "Trista", a sumptuous velvet variation of our beloved Camila leotard. Trista's elegant mesh inserts at the neckline and waist, framed by sleek double trim lines, create a refined yet contemporary aesthetic. With adjustable straps to ensure the perfect customizable fit, this camisole leotard seamlessly blends luxurious texture with sophisticated details. It's the ultimate standout piece, designed to bring elegance and confidence to every dancer's performance.



Youth sizes

DAD5005MPN Little Trista

Sizing by age	10-11 Y	12-13 Y
Size RU	36	38

Adult sizes

DA5005MPN Trista

International size	XXS	XS	S	M	L	XL
Size RU	40	42	44	46	48	50

Material: 80% polyamide micro, 20% elastane

All sizes with lining and pockets for cups

- Malachite
- Dark Blue
- Mother of Pearl
- Black
- Poppy
- Tea Rosa



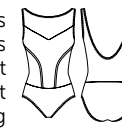
Mother of Pearl

Tea Rosa

Trinity

Tank style leotard

Sophisticated and stylish, this boatneck tank leotard features a modest V-cut bust line that transitions to a luxurious velvet trim at the waist, elongating your silhouette. A large mesh insert at the front adds allure, while the back showcases an expansive mesh panel for dramatic effect. This perfect blend of classic elegance and modern flair offers a refined, flattering design for dancers who appreciate timeless style with a contemporary edge.



Youth sizes

DAD5006MPN Little Trinity

Sizing by age	10-11 Y	12-13 Y
Size RU	36	38

Adult sizes

DA5006MPN Trinity

International size	XXS	XS	S	M	L	XL
Size RU	40	42	44	46	48	50

Material: 80% polyamide micro, 20% elastane

All sizes with lining and pockets for cups

- Malachite
- Dark Blue
- Mother of Pearl
- Black
- Poppy
- Tea Rosa



Black

Poppy

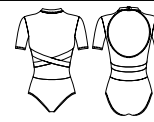


DA5007MPN Trina
Long sleeve leotard
Poppy

Trina

Half-sleeve leotard

This striking half-sleeve leotard redefines uniqueness with its stylish mock turtleneck and crisscrossing velvet trim at the waist, accentuating the eye-catching mesh insert on the front. The back features a secure clasp closure and a mid-sized keyhole framed by velvet trim and a mesh waist insert, adding a sophisticated contemporary twist. Combining elegance with structure, this leotard offers unparalleled comfort and a bold silhouette, perfect for dancers seeking a blend of classic sophistication and modern style.



Youth sizes

DAD5007MPN Little Trina

Sizing by age	10–11 Y	12–13 Y
Size RU	36	38

Adult sizes

DA5007MPN Trina

International size	XXS	XS	S	M	L	XL
Size RU	40	42	44	46	48	50

Material: 80% polyamide micro, 20% elastane

All sizes with lining

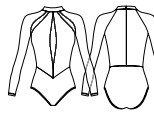
- Malachite
- Dark Blue
- Tiffany
- Black
- Poppy
- Tea Rosa



Treya

Long sleeve leotard

Indulge in elegance with this luxurious long-sleeve mock turtleneck leotard, featuring velvet panels for an opulent touch. Double-layered mesh inserts cascade down the center and above the bust, creating a refined contrast. An invisible back zipper ensures a sleek finish, combining modesty with style. This leotard beautifully blends texture and sophistication, creating a graceful silhouette that captivates every dancer.



Youth sizes

DAD5008MPN Little Treya

Sizing by age	10–11 Y	12–13 Y
Size RU	36	38

Adult sizes

DA5008MPN Treya

International size	XXS	XS	S	M	L	XL
Size RU	40	42	44	46	48	50

Material: 80% polyamide micro, 20% elastane

All sizes with lining

- Malachite
- Black
- Dark Blue
- Tea Rosa





DA5009MPN Troya
Leotard
Poppy

DA1945N Tabitha
Skirt
Poppy

Troya

Leotard

Absolutely breathtaking, this flutter sleeve leotard embodies elegance and femininity. The sweetheart bustline is framed by a modest mesh scoop neck, while a luxurious velvet insert cascades to the waist, creating a flattering silhouette. The back features a deep V-cut nude mesh insert for added drama and grace. With delicate flutter sleeves and intricate design accents, this leotard is a show-stopper, ensuring you captivate attention with every move.



Youth sizes

DAD5009MPN Little Troya

Sizing by age	10–11 Y	12–13 Y
Size RU	36	38

Adult sizes

DA5009MPN Troya

International size	XXS	XS	S	M	L	XL
Size RU	40	42	44	46	48	50

Material: 80% polyamide micro, 20% elastane

All sizes with lining and pockets for cups

- Malachite
- Dark Blue
- Tiffany
- Black
- Poppy
- Tea Rosa



Malachite

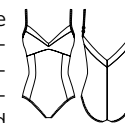


Black

Trisha

Camisole leotard

Elevate your dance wardrobe with this elegant camisole leotard, featuring a touch of luxurious velvet trim along the modest scoop neckline. The curved empire waist and front princess seams create a flattering silhouette, while the adjustable straps ensure a perfect fit. A one-inch wide velvet trim in the back forms a graceful V-cut, adding a chic and sophisticated finish to this stylish piece.



Youth sizes

DAD5025MPN Little Trisha

Sizing by age	10–11 Y	12–13 Y
Size RU	36	38

Adult sizes

DA5025MPN Trisha

International size	XXS	XS	S	M	L	XL
Size RU	40	42	44	46	48	50

Material: 80% polyamide micro, 20% elastane

All sizes with lining and pockets for cups

- Malachite
- Dark Blue
- Tiffany
- Black
- Poppy
- Tea Rosa



Dark Blue



Tiffany

MYS- TIC VEIL



This group captivates with its unique mono flock line, featuring intricate designs artfully applied to Italian four-way stretch mesh. Crafted to lend an exquisite back detail, each piece tells a story of intrigue and allure, as if wrapped in a mysterious embrace. Imagine donning a veil of elegance, where every twist and turn reveals a new layer of enchantment, captivating all who behold your artistry.

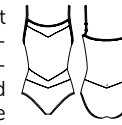


DA5010MPN Torea
Camisole leotard
Tea Rosa

Torea

Camisole leotard

Sensual details meet elegant design in this captivating camisole leotard. The front showcases a sweetheart bust, enhanced by delicate mesh inserts at the neckline and low waist to create a sophisticated, graceful silhouette. The back is adorned with tone-on-tone flocking, adding refined texture and a touch of class. Effortlessly stylish and truly unique, this leotard will undoubtedly become a must-have for every dancer looking to elevate their performance wardrobe.



Youth sizes

DAD5010MPN Little Torea

Sizing by age	10–11 Y	12–13 Y
Size RU	36	38

Adult sizes

DA5010MPN Torea

International size	XXS	XS	S	M	L	XL
Size RU	40	42	44	46	48	50

Material: 80% polyamide micro, 20% elastane

All sizes with lining and pockets for cups

- Malachite
- Black
- Tea Rosa



Tea Rosa

Malachite

Tonelle

Camisole leotard

Inspired by our beloved Torea, this leotard introduces a more modest twist with exquisite Italian microfiber replacing the mesh at the low waist, providing added coverage without compromising style. All the original elegant features remain, from the flattering sweetheart bustline to the intricate tone-on-tone flocking on the back. With its refined design, sophisticated detailing, and comfortable fit, this leotard offers a polished and graceful look, perfect for dancers who seek timeless elegance with a touch of modesty.



Youth sizes

DAD5010/1MPN Little Tonelle

Sizing by age	10–11 Y	12–13 Y
Size RU	36	38

Adult sizes

DA5010/1MPN Tonelle

International size	XXS	XS	S	M	L	XL
Size RU	40	42	44	46	48	50

Material: 80% polyamide micro, 20% elastane

All sizes with lining and pockets for cups

- Black



Black

Black



DA5011MPN Tomika
Tank style leotard
Tea Rosa

Tomika

Tank style leotard

This tank leotard's mock wrap bust brings a graceful, draped quality, adding to its elegant flow and flattering silhouette. The back stuns with tone-on-tone flocking over a strong stretch mesh, gracefully descending into a dramatic deep V-cut, creating a majestic and eye-catching finish. Blending fluidity with structure, this leotard offers a captivating look from every angle, making it a perfect choice for dancers who want to stand out with elegance and poise.



Youth sizes

DAD5011MPN Little Tomika

Sizing by age	10-11 Y	12-13 Y
Size RU	36	38

Adult sizes

DA5011MPN Tomika

International size	XXS	XS	S	M	L	XL
Size RU	40	42	44	46	48	50

Material: 80% polyamide micro, 20% elastane

All sizes with lining and pockets for cups

- Malachite
- Black
- Tea Rosa



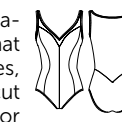
Malachite

Black

Tosca

Camisole leotard

This delightful tank leotard features curved princess seams that enhance and elongate your lines, complemented by a mesh V-cut neckline and sweetheart bust for a flattering shape. The back captivates with a large flocking pattern on four-way stretch mesh, cascading into a deep V shape at the waist. Blending elegance and structure, this leotard offers a refined silhouette, making it a stunning choice for any dancer seeking sophistication in their performance.



Youth sizes

DAD5012MPN Little Tosca

Sizing by age	10-11 Y	12-13 Y
Size RU	36	38

Adult sizes

DA5012MPN Tosca

International size	XXS	XS	S	M	L	XL
Size RU	40	42	44	46	48	50

Material: 80% polyamide micro, 20% elastane

All sizes with lining and pockets for cups

- Malachite
- Black
- Tea Rosa



Tea Rosa

Malachite



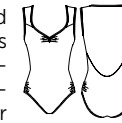
DA5014MPN Tolana
Long sleeve leotard
Black

DA4081N
Mesh skirt
Black

Tori

Tank style leotard

This scoop neck tank leotard offers a flattering shape with its fixed pinch at the bust, beautifully complemented by our stellar hip cinch to accentuate your silhouette. The back stuns with an expansive mesh panel adorned with intricate flocking, cascading gracefully down into a soft V at the waist. Effortlessly blending style and sophistication, this leotard elevates every movement with a touch of elegance and flair, making it a must-have for any dancer's wardrobe.



Youth sizes

DAD5013MPN Little Tori

Sizing by age	10-11 Y	12-13 Y
Size RU	36	38

Adult sizes

DA5013MPN Tori

International size	XXS	XS	S	M	L	XL
Size RU	40	42	44	46	48	50

Material: 80% polyamide micro, 20% elastane

All sizes with lining and pockets for cups

- Malachite
- Black
- Tea Rosa



Black

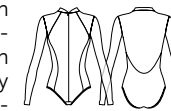


Malachite

Tolana

Long sleeve leotard

Wrap yourself in luxury with this exquisite high-neck leotard, featuring long mesh sleeves that drape elegantly for a flowing look. The refined silhouette is enhanced by an invisible front zipper and delicately curved princess seams that flatter every line. The dramatic back showcases a deep U-shaped mesh insert adorned with a captivating tone-on-tone flocking pattern cascading to the waist. This stunning piece combines sophistication and drama, perfect for making a statement on stage or in the studio.



Youth sizes

DAD5014MPN Little Tolana

Sizing by age	10-11 Y	12-13 Y
Size RU	36	38

Adult sizes

DA5014MPN Tolana

International size	XXS	XS	S	M	L	XL
Size RU	40	42	44	46	48	50

Material: 80% polyamide micro, 20% elastane

All sizes with lining

- Malachite
- Black
- Tea Rosa



Malachite



Tea Rosa

FLOCKED ENCHANT- MENT



Boasting fully flocked Italian stretch mesh, this collection is designed to create a stunning silhouette that enhances your natural grace and poise. Like a phoenix emerging from the flames, these garments celebrate transformation and beauty in motion. As you dance, envision waves of enchantment flowing from your fingertips, leaving a trail of wonder that resonates within the hearts of all who watch.





DA5016MPN Teva
High neck leotard
Black/Beige

Tessa

Camisole leotard

This high-fashion adjustable camisole leotard elevates your style with two stunning choices: opt for elegant black tone-on-tone flocking or a striking nude mesh with black flocking contrast. The plush velvet quarter panels on the front add a luxurious touch, while a double-layered nude mesh insert graces the bust, enhancing elegance and sophistication. Effortlessly blending modern flair with classic elements, this leotard is a true stand-out for any dancer looking to make a stylish and unforgettable impression.



Youth sizes

DAD5015MPN Little Tessa

Sizing by age	10–11 Y	12–13 Y
Size RU	36	38

Adult sizes

DA5015MPN Tessa

International size	XXS	XS	S	M	L	XL
Size RU	40	42	44	46	48	50

Material: 80% polyamide micro, 20% elastane

All sizes with lining

- Black
- Black/Beige



Black/Beige

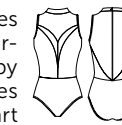


Black/Beige

Teva

High neck leotard

This high-neck leotard redefines elegance, featuring a mock turtleneck beautifully encircled by luxurious velvet trim that frames a deep plunging sweetheart bustline. Divine flocking decorates the back and décolleté, creating a striking contrast and adding a touch of intricate detail. With its blend of sumptuous velvet and delicate design, this leotard captures the very essence of haute couture, making it a must-have for dancers who want to radiate sophistication and style.



Youth sizes

DAD5016MPN Little Teva

Sizing by age	10–11 Y	12–13 Y
Size RU	36	38

Adult sizes

DA5016MPN Teva

International size	XXS	XS	S	M	L	XL
Size RU	40	42	44	46	48	50

Material: 80% polyamide micro, 20% elastane

All sizes with lining and pockets for cups

- Black
- Black/Beige



Black/Beige



Black



DA5018MPN Teela
Tank style leotard
Black

Tempest

Tank style leotard

This beyond-beautiful tank leotard radiates captivating allure, with stunning microfiber panels framed by fabulous flocking on stretch mesh. The back reveals a mid-plunge soft V-shaped scoop, gracefully adorned with intricate flocking that flows down to the waist. Designed to enhance every line and movement, this leotard blends sophistication with comfort, offering an unforgettable look that will make you stand out on stage or in the studio.



Youth sizes

DAD5017MPN Little Tempest

Sizing by age	10–11 Y	12–13 Y
Size RU	36	38

Adult sizes

DA5017MPN Tempest

International size	XXS	XS	S	M	L	XL
Size RU	40	42	44	46	48	50

Material: 80% polyamide micro, 20% elastane

All sizes with lining and pockets for cups

- Black
- Black/Beige
- Tea Rosa
- Malachite



Black

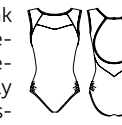


Black/Beige

Teela

Tank style leotard

This super stylish high-neck tank leotard exudes grace and refinement, featuring a delicate lace-on-mesh design that elegantly accents the area above the bustline. The back mirrors this intricate lace detailing, framing a medium-sized keyhole just below a secure clasp closure for a touch of elegance. Our hip cinch option provides a flattering fit, enhancing your silhouette. Blending timeless elegance with modern style, this leotard is an exquisite choice for any dancer looking for a refined and sophisticated edge.



Youth sizes

DAD5018MPN Little Teela

Sizing by age	10–11 Y	12–13 Y
Size RU	36	38

Adult sizes

DA5018MPN Teela

International size	XXS	XS	S	M	L	XL
Size RU	40	42	44	46	48	50

Material: 80% polyamide micro, 20% elastane

All sizes with lining and pockets for cups

- Black
- Black/Beige
- Tea Rosa
- Malachite



Black/Beige



Black/Beige

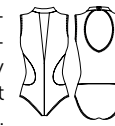


DA5020MPN Telena
Long sleeve leotard
Black/Beige

Teanna

High neck leotard

This high-neck tank leotard exudes sophistication, with a central mesh insert that gracefully narrows toward the lined waist for a stylish yet modest touch.



The back is elegantly adorned with intricate all-over flocking, available in three tone-on-tone colorways or a bold black-on-beige design, beautifully framing a medium-sized keyhole. A blend of elegance and comfort, this leotard offers a refined look that's sure to turn heads, whether on stage or in practice.

Youth sizes

DAD5019MPN Little Teanna

Sizing by age	10–11 Y	12–13 Y
Size RU	36	38

Adult sizes

DA5019MPN Teanna

International size	XXS	XS	S	M	L	XL
Size RU	40	42	44	46	48	50

Material: 80% polyamide micro, 20% elastane

All sizes with lining and pockets for cups

- Black
- Black/Beige
- Tea Rosa
- Malachite



Black



Black

Telena

Long sleeve leotard

Adorned with luxurious flocking, this long-sleeve leotard brings an elegant touch to the moderate V-shaped neckline, effortlessly blending sophistication and grace.



The back features a secure clasp closure, unveiling a chic diamond-shaped keyhole that flows seamlessly into a graceful U-shaped scoop at the waist. Designed for both comfort and style, this leotard offers a timeless silhouette, perfect for any dancer in search of a refined and polished look.

Youth sizes

DAD5020MPN Little Telena

Sizing by age	10–11 Y	12–13 Y
Size RU	36	38

Adult sizes

DA5020MPN Telena

International size	XXS	XS	S	M	L	XL
Size RU	40	42	44	46	48	50

Material: 80% polyamide micro, 20% elastane

All sizes with lining and pockets for cups

- Black
- Black/Beige
- Tea Rosa
- Malachite



Black/Beige



Black

MEN'S DANCE FASHION

To complement these stunning women's pieces, our men's dance fashion collection offers equally stylish options, ensuring that every dancer can embody the beauty of this collection.

The Radiance collection is our largest and most exceptional offering to date, inviting you to embrace your artistry with garments that seamlessly blend beauty, comfort, and performance. Elevate your dance wardrobe and experience the enchanting allure of this remarkable collection, where every piece tells a story, and every story inspires a movement.





DA5050MN Tristan
Tank biketard
Black

Tristan

Tank biketard

Available in four trendy colors, this tank biketard redefines the basics! Featuring a flattering scoop neckline and a slightly higher back, it creates a sleek, streamlined fit that enhances your shape. The 7-inch inseam ensures both comfort and freedom of movement, making this biketard a stylish staple that every dancer will love to have in their wardrobe. Classic yet chic, it's the perfect blend of function and fashion.



Youth sizes

DAD5050MN Little Tristan

Sizing by age	10-11Y	12-13Y
Size RU	36	38

Adult sizes

DA5050MN Tristan

International size	XXS	XS	S	M	L	XL	2XL	3XL
Size RU	40	42	44	46	48	50	52	54

Material: 80% polyamide micro, 20% elastane

- Malachite
- Poppy
- Dark Blue
- Black



Black

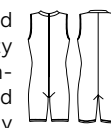


Poppy

Tyler

Crew neck biketard

This crew neck sleeveless biketard combines style and functionality effortlessly, with a discreet invisible front zipper for quick and easy changes. The approximately 8-inch inseam provides a comfortable and flattering fit, while the clean lines and sleek design offer a modern edge. Perfect for the contemporary dancer, this biketard is a fabulous choice that ensures you stay stylish and ready for anything, both in and out of the studio.



Youth sizes

DAD5051MN Little Tyler

Sizing by age	10-11Y	12-13Y
Size RU	36	38

Adult sizes

DA5051MN Tyler

International size	XXS	XS	S	M	L	XL	2XL	3XL
Size RU	40	42	44	46	48	50	52	54

Material: 80% polyamide micro, 20% elastane

- Malachite
- Poppy
- Dark Blue
- Mother of Pearl
- Black



Mother of Pearl



Mother of Pearl



DA5052MN Troy
Unitard
Black/Mother of Pearl

Troy Unitard

Choose between sleek solid black or a chic color-blocked top with black bottoms—this ankle-length unitard wraps you in comfort and style. Featuring a flattering scoop neckline and an invisible front zipper for effortless wear, its higher back design offers ideal coverage while maintaining elegance. Whether you're drawn to a classic, understated look or crave a bold pop of color, this unitard delivers a flattering fit and a striking silhouette, perfect for every dancer looking to move with confidence.



Youth sizes DAD5052MN Little Troy

Sizing by age	10-11Y	12-13Y
Size RU	36	38

Adult sizes DA5052MN Troy

International size	XXS	XS	S	M	L	XL	2XL	3XL
Size RU	40	42	44	46	48	50	52	54

Material: 80% polyamide micro, 20% elastane

- Black/Malachite
- Black/Mother of Pearl
- Black/Dark Blue
- Black
- Black/Poppy



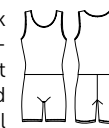
Black/Malachite



Black/Poppy

Terrence Tank biketard

This one-of-a-kind scoop neck tank biketard redefines dance-wear with its fully lined front and back, offering enhanced comfort and coverage. The real showstopper is the upper fabric—crafted to create a mesmerizing optical illusion that adds a dynamic, modern twist to your look. With an inseam of approximately 8 inches, this biketard ensures a flattering and confident fit, perfect for dancers who want to make a stylish statement and stand out with every movement.



Youth sizes DAD5053MN Little Terrence

Sizing by age	10-11Y	12-13Y
Size RU	36	38

Adult sizes DA5053MN Terrence

International size	XXS	XS	S	M	L	XL	2XL	3XL
Size RU	40	42	44	46	48	50	52	54

Material: 80% polyamide micro, 20% elastane

- Black



Black



Black



DA5054MN Tatum
Tank unitard
Black

Tatum

Tank unitard

This stunning ankle-length tank unitard blends style and comfort seamlessly, with the top half fully lined beneath sultry black fabric for a sleek and polished silhouette. An invisible front zipper ensures quick, effortless changes, making it both practical and chic. Whether in the studio or on stage, this unitard offers a modern, elegant look that's ready for anything, making it a must-have for dancers who appreciate both functionality and flair.



Youth sizes

DAD5054MN Little Tatum

Sizing by age	10-11Y	12-13Y
Size RU	36	38

Adult sizes

DA5054MN Tatum

International size	XXS	XS	S	M	L	XL	2XL	3XL
Size RU	40	42	44	46	48	50	52	54

Material: 80% polyamide micro, 20% elastane

● Black



Black



Black

Tate

Tank unitard

This breathtaking ankle-length tank unitard is a true showstopper, fully lined on the top half with either Malachite or Poppy, adding a mesmerizing iridescent glow beneath the sleek black fabric with matching sporty trim down the sides of both legs. The shimmering lining creates a dynamic play of color and movement, ensuring all eyes are on you. An invisible front zipper ensures effortless wear, making this piece both versatile and striking — perfect for dancers ready to shine in every setting, from the studio to the stage.



Youth sizes

DAD5055MN Little Tate

Sizing by age	10-11Y	12-13Y
Size RU	36	38

Adult sizes

DA5055MN Tate

International size	XXS	XS	S	M	L	XL	2XL	3XL
Size RU	40	42	44	46	48	50	52	54

Material: 80% polyamide micro, 20% elastane

●● Black/Malachite
●● Black/Poppy



Black/Malachite



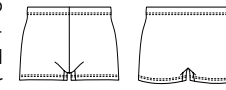
Black/Malachite



DA5057VMN Titus
Unitard
Black

Tevin Shorts

Our sharp micro bike shorts are designed for style and support. Perfect for dancers seeking a balance of performance and sophistication, these shorts are as functional as they are fashionable.



Youth sizes DAD5056MN Little Tevin

Sizing by age	10-11Y	12-13Y
Size RU	36	38

Adult sizes DA5056MN Tevin

International size	XXS	XS	S	M	L	XL	2XL	3XL
Size RU	40	42	44	46	48	50	52	54

Material: 80% polyamide micro, 20% elastane

- Malachite
- Dark Blue
- Poppy
- Black



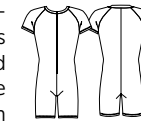
Black



Black

Titus Unitard

For danseurs seeking a coordinated, refined look, this opulent short-sleeve biketard offers a perfect blend of style and functionality. Velvet trim along the crew neckline and sleeves adds a touch of luxury, while the invisible zipper extends to the waist for easy changes. With an inseam of approximately 8 inches, this biketard provides a comfortable fit designed for movement and elegance on stage.



Youth sizes DAD5057VMN Little Titus

Sizing by age	10-11Y	12-13Y
Size RU	36	38

Adult sizes DA5057VMN Titus

International size	XXS	XS	S	M	L	XL	2XL	3XL
Size RU	40	42	44	46	48	50	52	54

Material: 80% polyamide micro, 20% elastane

- Malachite
- Dark Blue
- Poppy
- Black



Poppy



Malachite

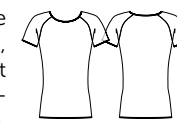


DA5060N Tommy
T-Shirt
Black

DA5061MN Taren
Shorts
Black

Tommy T-Shirt

This luxurious short-sleeve shirt, crafted for dancers, is adorned with rich velvet flocking for an eye-catching texture and elegance. Perfect for male performers, this shirt is designed to elevate any costume, providing both comfort and style. With our commitment to inclusivity, we ensure our collections feature sophisticated pieces for men and boys, allowing them to shine on stage with confidence and class.



Youth sizes DAD5060N Little Tommy

Sizing by age	10-11Y	12-13Y
Size RU	36	38

Adult sizes DA5060N Tommy

International size	XXS	XS	S	M	L	XL	2XL	3XL
Size RU	40	42	44	46	48	50	52	54

Material: 93% polyamide, 7% elastane

- Malachite
- Black/Beige
- Black



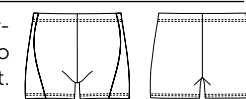
Black



Black

Taren Shorts

Meet Taren, the perfect complement to the Tommy shirt. These sleek micro bike shorts are designed specifically for male dancers, featuring coordinating velvet flocked inserts on both hips for a stylish, cohesive look. Taren offers a comfortable, streamlined fit, making it the ideal finishing touch for a polished stage presence.



Youth sizes DAD5061MN Little Taren

Sizing by age	10-11Y	12-13Y
Size RU	36	38

Adult sizes DA5061MN Taren

International size	XXS	XS	S	M	L	XL	2XL	3XL
Size RU	40	42	44	46	48	50	52	54

Material: 80% polyamide micro, 20% elastane

- Malachite
- Black/Malachite
- Black/Beige
- Black



Black



Black



CRIMSON SHADOWS

BLACK LABEL LIMITED EDITION

Returning to Gustav Klimt once again, we found ourselves inspired by his gorgeous Garden Style Cat paintings. This beautiful black cat is surrounded by a field of stunning flowers. Offered in a variety of silhouettes, you'll fall in love with this fantastic feline just as we did. Enjoy Crimson Shadows in all its splendor!



Dione

Camisole leotard

This purr-fect adjustable strap camisole leotard is a work of art, featuring our latest Black Label print – Gustav Klimt's Cat. The captivating black cat sits amidst a garden of flowers, adding an artistic and playful elegance to your dancewear, as if you can almost hear her soft, contented purr. The back is beautifully detailed with teardrop-shaped cut-outs, creating a unique and stylish silhouette that's sure to turn heads. A perfect choice for those who crave a blend of beauty, artistry, and feline-inspired charm.



Youth sizes

DAD5021LPN Little Dione

Sizing by age	10–11 Y	12–13 Y
Size RU	36	38

Adult sizes

DA5021LPN Dione

International size	XXS	XS	S	M	L	XL
Size RU	40	42	44	46	48	50

Material: 80% polyester, 20% elastane

All sizes with lining and pockets for cups



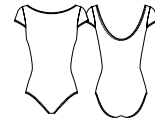
Cat

Cat

Dinah

Cap sleeve leotard

This classic cap sleeve leotard captures the joy of a playful kitty reveling in her happy place—the great outdoors! The modest scoop neckline in the front pairs beautifully with a lower scoop on the back, creating a timeless silhouette that flatters every movement. With its traditional cut and whimsical print, this leotard brings a charming touch to your dancewear, making it the perfect choice for dancers seeking both comfort and style with a playful twist.



Youth sizes

DAD5023LPN Little Dinah

Sizing by age	10–11 Y	12–13 Y
Size RU	36	38

Adult sizes

DA5023LPN Dinah

International size	XXS	XS	S	M	L	XL
Size RU	40	42	44	46	48	50

Material: 80% polyester, 20% elastane

All sizes with lining and pockets for cups



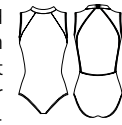
Cat

Cat

Darva

High neck leotard

This high-neck tank leotard brings joy and charm with a playful black cat print that adds life and character to your dancewear. Delicate mesh panels on both the front and back provide elegance and breathability, while a large key-hole beneath a secure clasp closure offers an exquisite and polished touch. Fun yet sophisticated, this leotard is perfect for dancers who want to make a stylish and spirited statement, ensuring you stand out with every twirl and leap.



Youth sizes

DAD5022LPN Little Darva

Sizing by age	10–11 Y	12–13 Y
Size RU	36	38

Adult sizes

DA5022LPN Darva

International size	XXS	XS	S	M	L	XL
Size RU	40	42	44	46	48	50

Material: 80% polyester, 20% elastane

All sizes with lining and pockets for cups



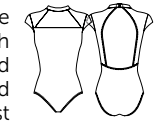
Cat

Cat

Demi

Cap sleeve leotard

This contemporary cap sleeve leotard radiates elegance with its high-neck design, enhanced by delicate mesh sleeves and mesh detailing above the bust for a modest yet sophisticated look. A contented black kitty print adds playful flair without compromising sophistication. The back features a medium-sized keyhole just below a secure clasp closure, enhancing the leotard's graceful and refined silhouette. Ideal for dancers who seek a modern style infused with a touch of feline charm, this leotard is a delightful blend of elegance and playfulness.



Youth sizes

DAD5024LPN Little Demi

Sizing by age	10–11 Y	12–13 Y
Size RU	36	38

Adult sizes

DA5024LPN Demi

International size	XXS	XS	S	M	L	XL
Size RU	40	42	44	46	48	50

Material: 80% polyester, 20% elastane

All sizes with lining and pockets for cups



Cat

Cat



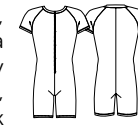
DA5021LPN Dione
Camisole leotard
Cat

DA5065MN Devin
Unitard
Black

Devin

Unitard

Designed for male dancers, this stylish biketard features a subtle nod to our Klimt kitty motif on the short sleeves, elegantly layered under black mesh for a sophisticated touch. The classic crew neckline transitions seamlessly into an invisible zipper, ensuring quick and effortless costume changes. Perfectly balancing style and functionality, this biketard brings a refined edge to any performance wardrobe.



Youth sizes

DAD5065MN Little Devin

Sizing by age	10-11Y	12-13Y
Size RU	36	38

Adult sizes

DA5065MN Devin

International size	XXS	XS	S	M	L	XL	2XL	3XL
Size RU	40	42	44	46	48	50	52	54

Material: 80% polyamide micro, 20% elastane

● Black



Deanna

Mesh skirt

Complete any dance ensemble with Deanna, a beautifully crafted skirt made from our premium stretch power mesh. Designed to provide an elegant, airy flow, Deanna offers the perfect balance of movement and style that dancers of all ages adore. This versatile skirt is an ideal addition for both girls and ladies, adding a touch of grace to every performance.



Youth sizes

DAD4081N Little Deanna

Sizing by age	10-11 Y	12-13 Y
Size RU	36	38

Adult sizes

DA4081N Deanna

International size	XXS	XS	S	M	L	XL
Size RU	40	42	44	46	48	50

Material: 93% polyamide, 7% elastane

● Black

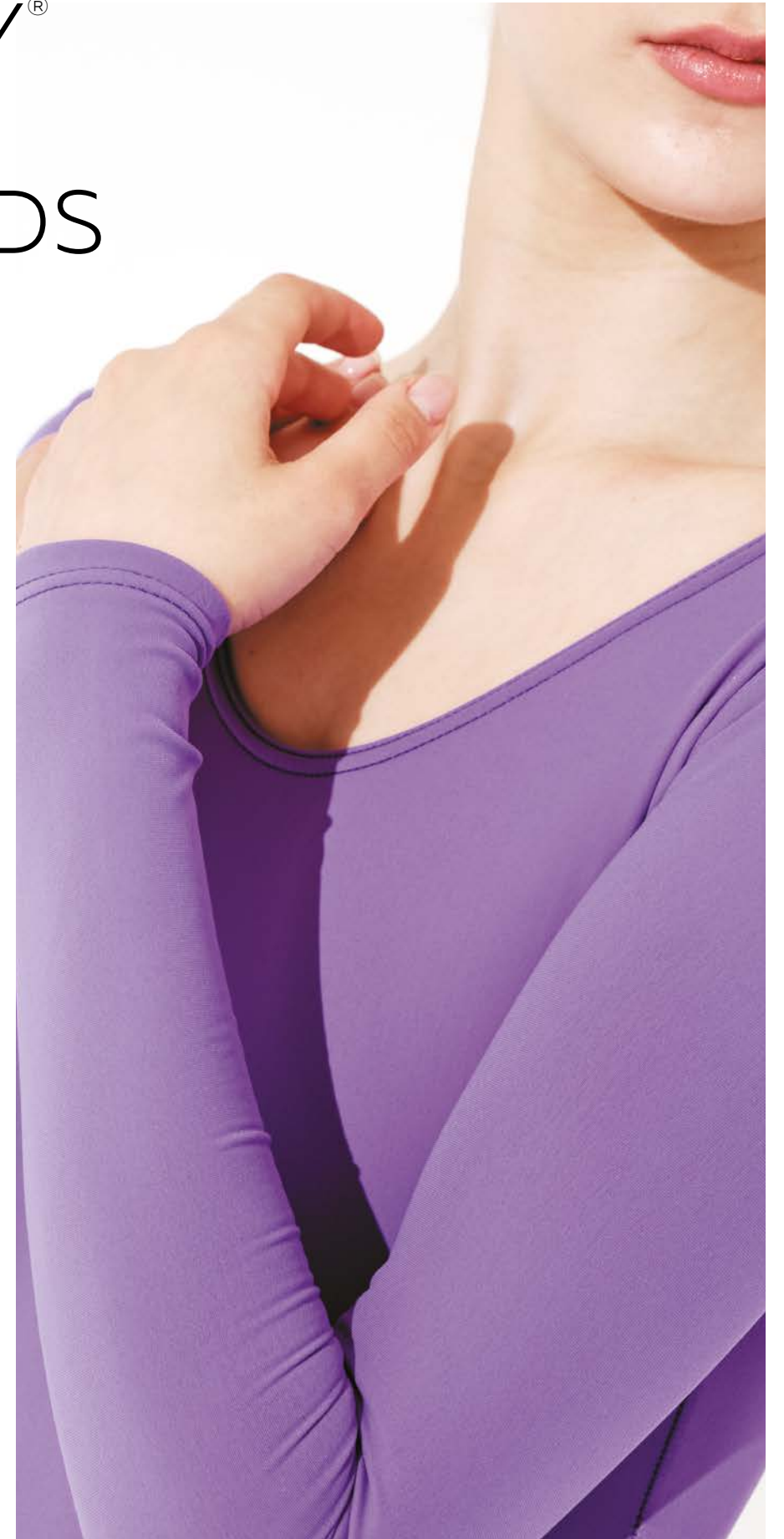


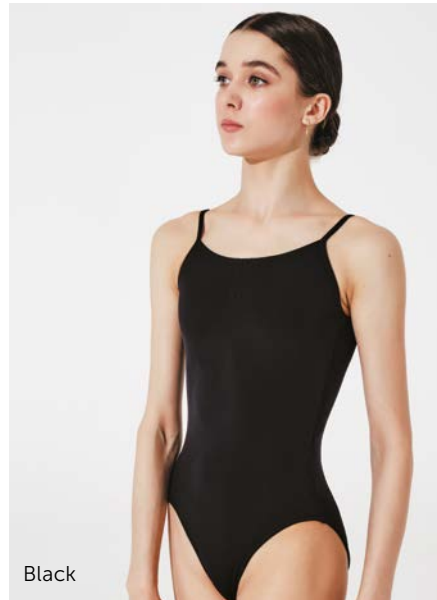
Black



NIKOLAY® BASIC LEOTARDS

Fantastic function was our focus when we created these new silhouettes. We went above and beyond to offer dancers the best basics on the market!

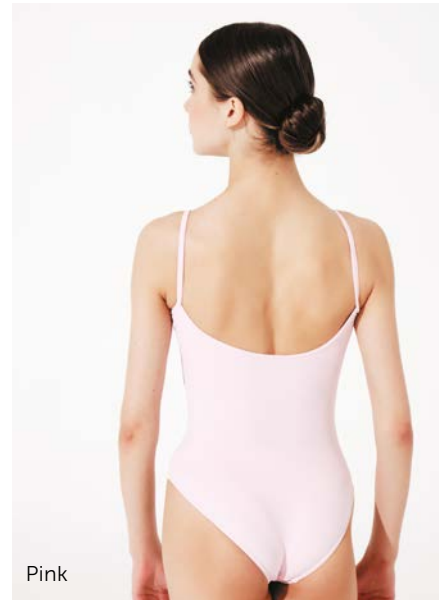




Black



Pink



Pink



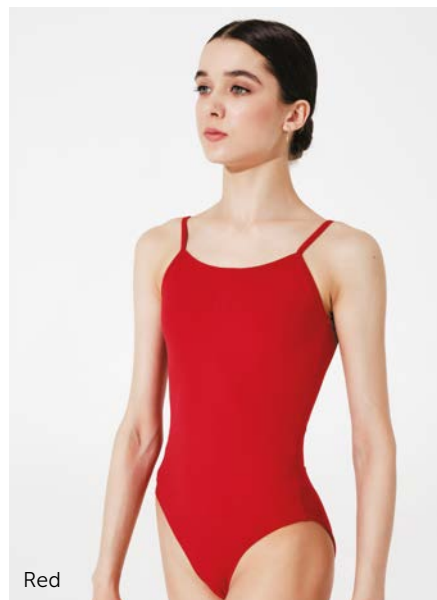
Lilac



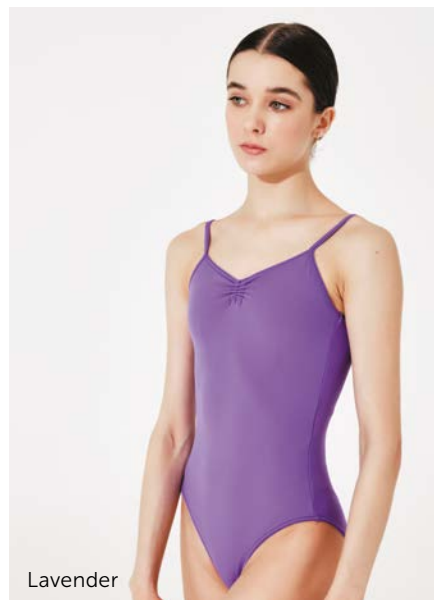
Light Blue



Light Blue



Red



Lavender



Lavender

Alla

Camisole leotard

NEW BASIC — Alla features an adjustable pinch at the bust line, thin camisole straps and a ballet cut to the leg line. Available in nine colors for the perfect dress code option!



Youth sizes

DPD08MPN Little Alla

Sizing by age	2-4 Y	4-6 Y	6-8 Y	8-10 Y	12-14 Y
Size RU	26	30	32	34	38

Adult sizes

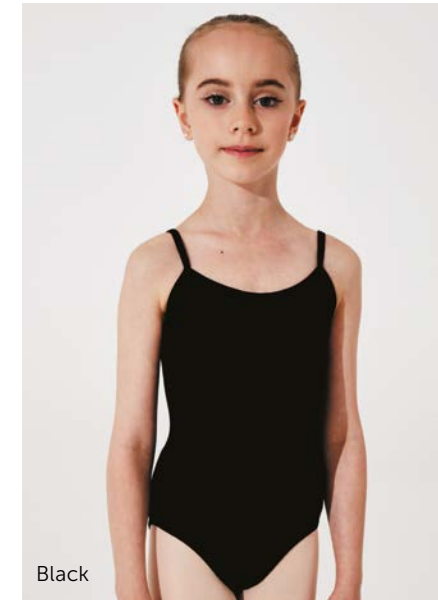
DP08MPN Alla

International size	XS	S	M	L	XL
Size RU	42	44	46	48	50

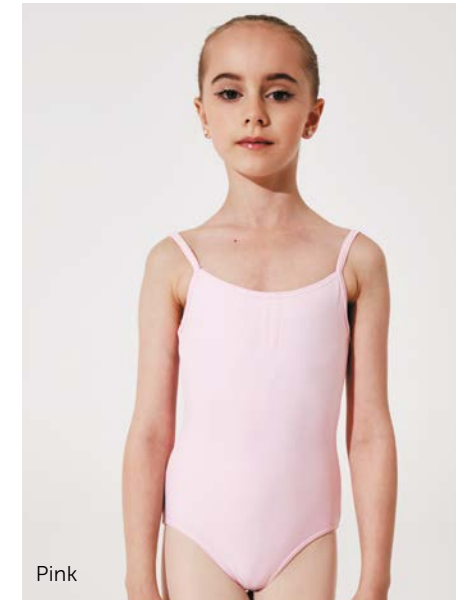
Material: 80% polyamide micro, 20% elastane.

All sizes feature full front lining.

- Black ○ White ● Light Blue
- Pink ● Red ● Royal Blue
- Lilac ● Bordeaux ● Lavender



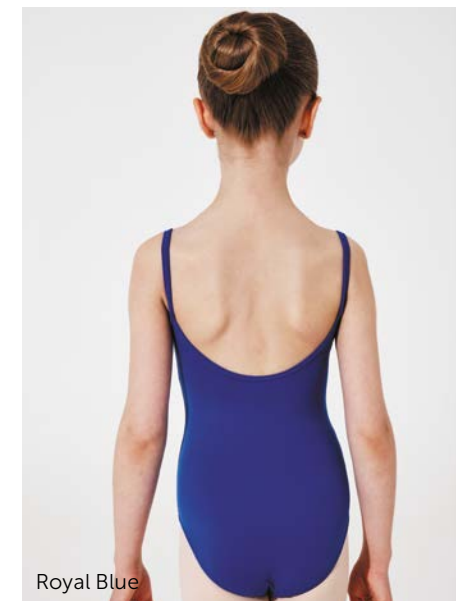
Black



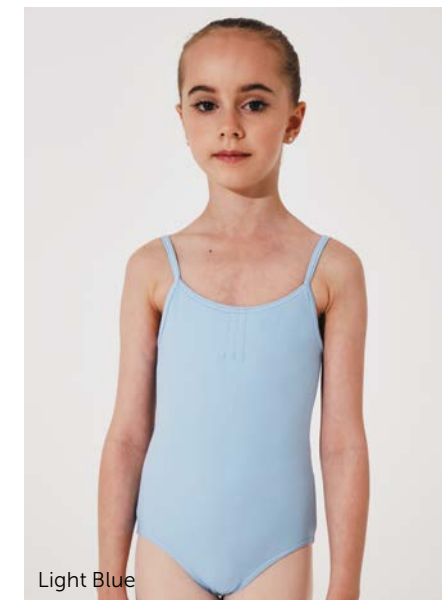
Pink



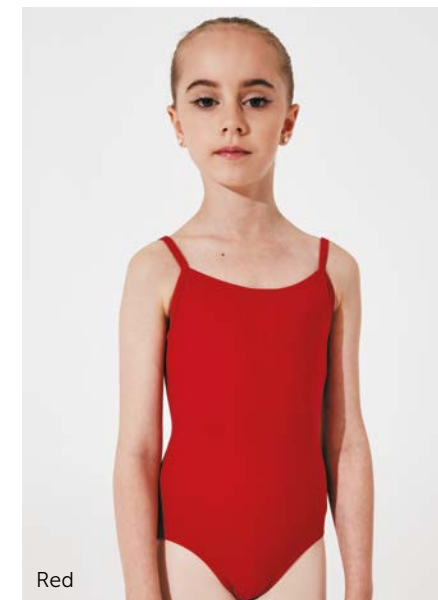
Lilac



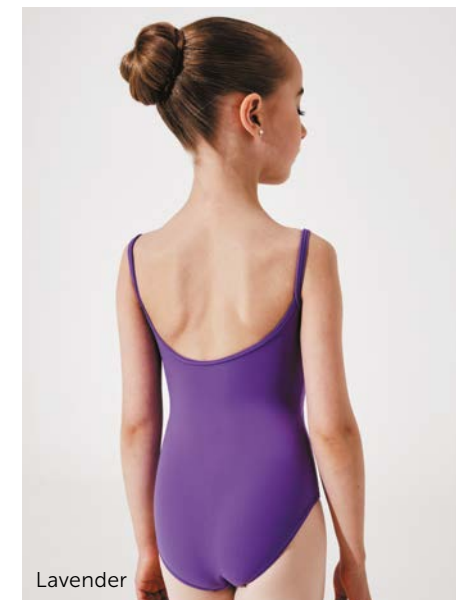
Royal Blue



Light Blue



Red



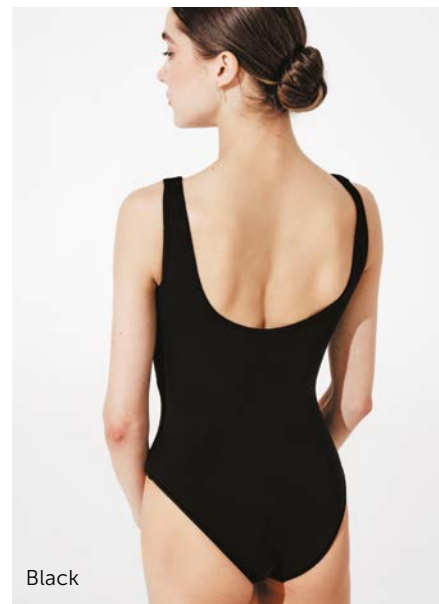
Lavender



Pink



Black



Black



Light Blue



Lilac



Lilac



Lavender



Red



Royal Blue

Alyona

Tank leotard

NEW BASIC — Alyona has a modest scoop neck line with a lower scoop on the back, plus a ballet cut leg line. Available in nine colors and five childrens and five adult sizes. Alyona is the quintessential basic that every dancer needs!



Youth sizes

DPD09MPN Little Alyona

Sizing by age	2-4 Y	4-6 Y	6-8 Y	8-10 Y	12-14 Y
Size RU	26	30	32	34	38

Adult sizes

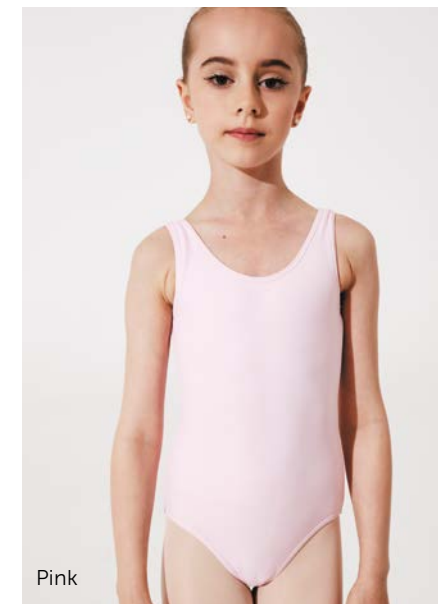
DP09MPN Alyona

International size	XS	S	M	L	XL
Size RU	42	44	46	48	50

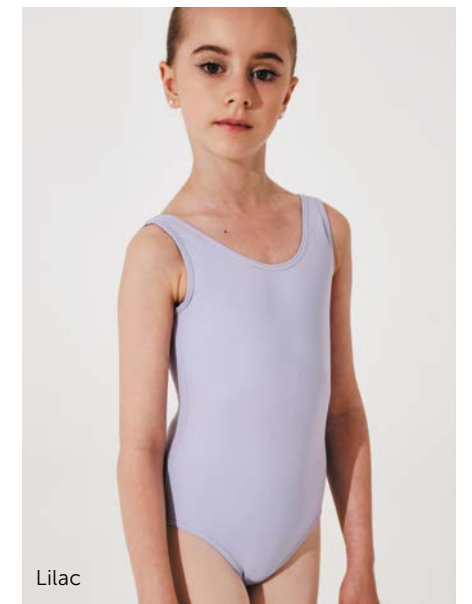
Material: 80% polyamide micro, 20% elastane.

All sizes feature full front lining.

- Black ○ White ● Light Blue
- Pink ● Red ● Royal Blue
- Lilac ● Bordeaux ● Lavender



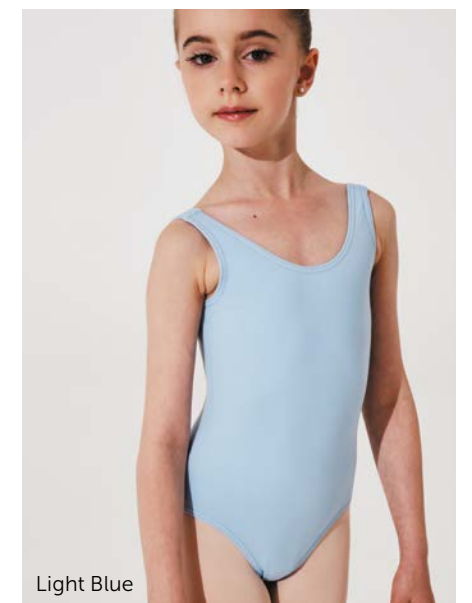
Pink



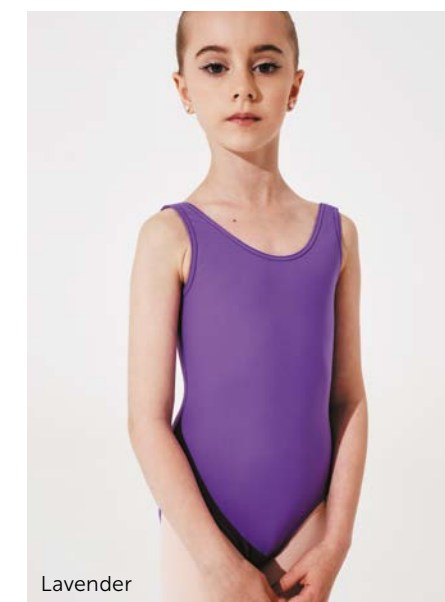
Lilac



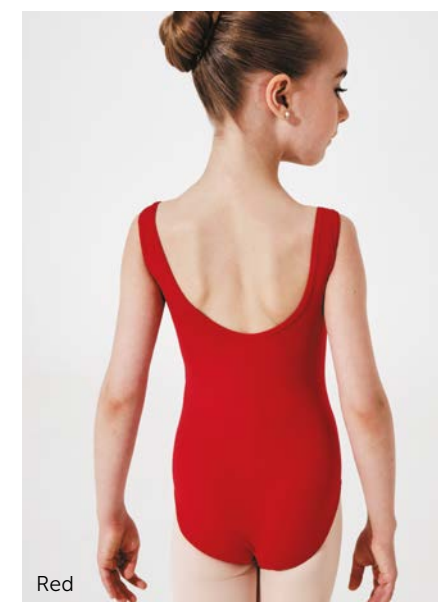
Black



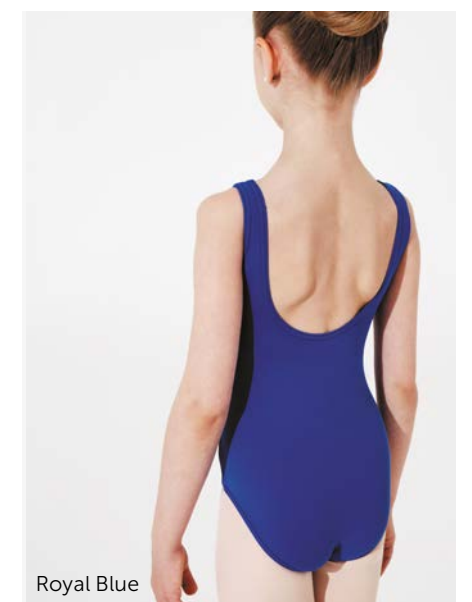
Light Blue



Lavender



Red



Royal Blue



Lilac



Lavender



Lavender



Red



White



White



Black



Pink

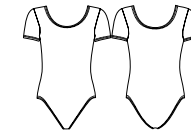


Royal Blue

Altunay

Cap sleeve leotard

NEW BASIC — Altunay is our classic short sleeve leotard with a perfectly modest scoop neck line and a slightly lower scoop on the back. Altunay has a ballet cut leg line and comes in nine colors as well as five childrens and five adult sizes.



Youth sizes

DPD04MPN Little Altunay

Sizing by age	2-4 Y	4-6 Y	6-8 Y	8-10 Y	12-14 Y
Size RU	26	30	32	34	38

Adult sizes

DP04MPN Altunay

International size	XS	S	M	L	XL
Size RU	42	44	46	48	50

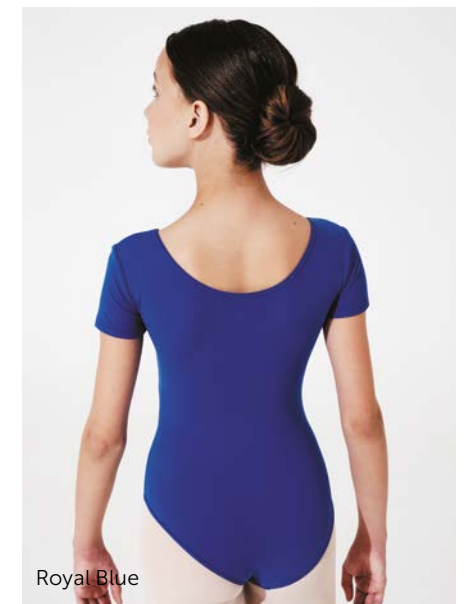
Material: 80% polyamide micro, 20% elastane.

All sizes feature full front lining.

- Black ○ White ● Light Blue
- Pink ● Red ● Royal Blue
- Lilac ● Bordeaux ● Lavender



Royal Blue



Royal Blue



Black



Pink



Lilac



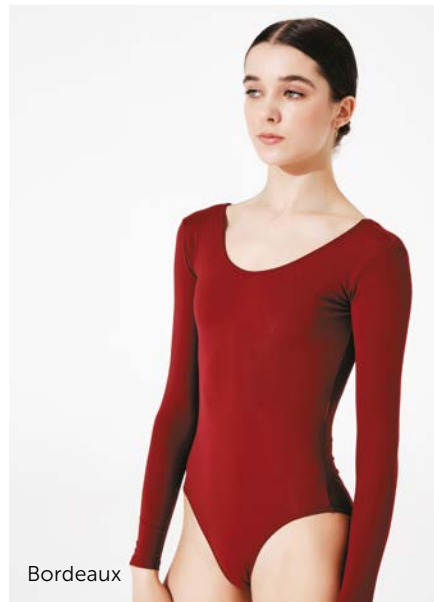
Light Blue



Red



Royal Blue



Bordeaux



Bordeaux



Black



Pink



Light Blue



Lavender



Red

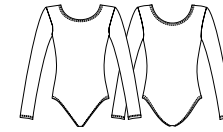


Lilac

Alina

Long sleeve leotard

NEW BASIC — Alina is our traditional long sleeve leotard which features a moderate scoop neck line with a scoop back and a ballet cut leg line. Available in five childrens and five adult sizes and nine colors for uni-forming needs.



Youth sizes

DPD03MPN Little Alina

Sizing by age	2-4 Y	4-6 Y	6-8 Y	8-10 Y	12-14 Y
Size RU	26	30	32	34	38

Adult sizes

DP03MPN Alina

International size	XS	S	M	L	XL
Size RU	42	44	46	48	50

Material:
80% polyamide micro, 20% elastane.

All sizes feature full front lining.

- Black ○ White ● Light Blue
- Pink ● Red ● Royal Blue
- Lilac ● Bordeaux ● Lavender



Black



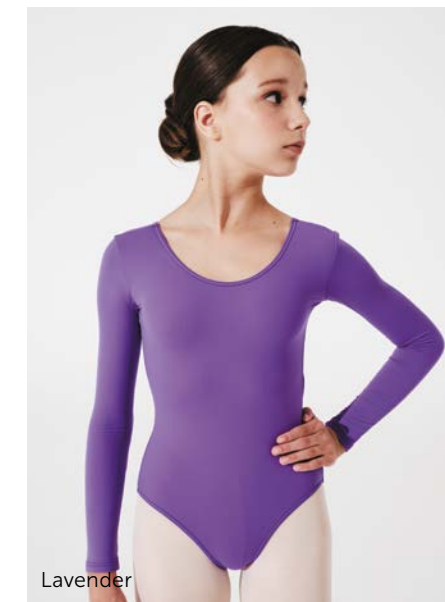
Pink



Lilac



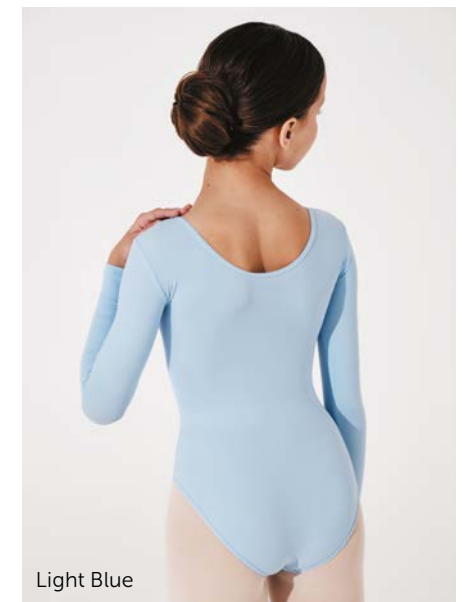
Red



Lavender



Royal Blue



Light Blue

Classic Excellence Collection is the best uniform range on the market. Our premium basics are created for the passion of dance. Upscale Italian materials and impeccable patterns create the perfect look and feel. Unique range of silhouettes and colors from classic to modern provide multiple options for dancers of every level. All adult Classic Excellence leotards feature removable bra cup pockets in the lining while youth sizes are fully front lined. New hip line adjustment element is added as a modern take on a classic line on select styles.

CLASSIC EXCELLENCE — TRADITION PERFECTED

CLASSIC EXCELLENCE





DA2001MPN Emely
Camisole leotard
French Blue

Emely

Camisole leotard

A gorgeous adjustable camisole strap leotard with fixed front pinch and adjustable hip pinch details. Open mid-back and elegant sweetheart bustline. Ideal leotard for uniform, classic elegance with modern flair.



Youth sizes

DAD2001MPN Little Emely

Sizing by age	5-6Y	6-7Y	8-9Y	9-10Y	10-11Y	12-13Y
Size RU	28	30	32	34	36	38

Adult sizes

DA2001MPN Emely

International size	XXS	XS	S	M	L	XL
Size RU	40	42	44	46	48	50

Material: 80% polyamide micro, 20% elastane

Sizes 28 (5-6 Y) – 36 (10-11 Y): fully front lined.
Sizes 38 (12-13 Y) – 50 (XL): fully front lined, pockets for cups.

- Ice Blue
- Light Blue
- French Blue
- Bordeaux
- Coffee
- Dark Grey
- Light Navy
- Royal Blue
- Lavender
- Olive
- Tiffany
- Medium Taupe
- Lilac
- Pink
- Red
- Black
- White



Ice Blue



Medium Taupe

Elena

Camisole leotard

A new take on a favorite look. Princess seams on front and back. Double V-back detail, fixed pinch front, adjustable camisole straps. Also featuring a premium Italian full front lining with bra cup pockets.



Youth sizes

DAD2001/1MPN Little Elena

Sizing by age	5-6Y	6-7Y	8-9Y	9-10Y	10-11Y	12-13Y
Size RU	28	30	32	34	36	38

Adult sizes

DA2001/1MPN Elena

International size	XXS	XS	S	M	L	XL
Size RU	40	42	44	46	48	50

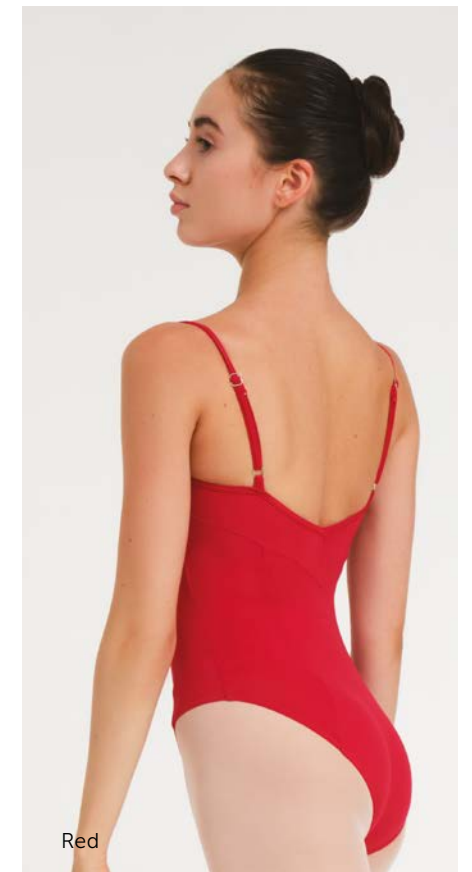
Material: 80% polyamide micro, 20% elastane

Sizes 28 (5-6 Y) – 36 (10-11 Y): fully front lined.
Sizes 38 (12-13 Y) – 50 (XL): fully front lined, pockets for cups.

- Ice Blue
- Light Blue
- French Blue
- Bordeaux
- Coffee
- Dark Grey
- Light Navy
- Royal Blue
- Lavender
- Olive
- Tiffany
- Medium Taupe
- Lilac
- Pink
- Red
- Black
- White



Light Navy



Red

Ella

Camisole leotard

Adjustable camisole leotard with elegant princess seams and mesh back detail in V shape as well as a fixed sweetheart bust line pinch.



Youth sizes

DAD2001/2MPN Little Ella

Sizing by age	5-6Y	6-7Y	8-9Y	9-10Y	10-11Y	12-13Y
Size RU	28	30	32	34	36	38

Adult sizes

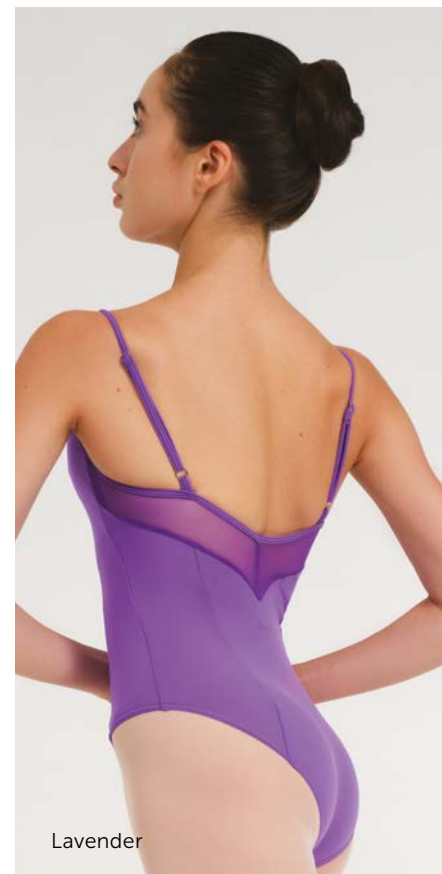
DA2001/2MPN Ella

International size	XXS	XS	S	M	L	XL
Size RU	40	42	44	46	48	50

Material: 80% polyamide micro, 20% elastane

Sizes 28 (5-6 Y) – 36 (10-11 Y): fully front lined.
Sizes 38 (12-13 Y) – 50 (XL): fully front lined, pockets for cups.

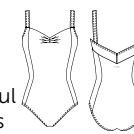
- Ice Blue
- Light Blue
- French Blue
- Bordeaux
- Coffee
- Dark Grey
- Light Navy
- Royal Blue
- Lavender
- Olive
- Tiffany
- Medium Taupe
- Lilac
- Pink
- Red
- Black
- White



Elsa

Tank style leotard

A gorgeous V-back line with four-way stretch mesh back details. Tank style with fixed front pinch creating a beautiful sweetheart neckline. Princess seams create a contouring line.



Youth sizes

DAD2002/2MPN Little Elsa

Sizing by age	5-6Y	6-7Y	8-9Y	9-10Y	10-11Y	12-13Y
Size RU	28	30	32	34	36	38

Adult sizes

DA2002/2MPN Elsa

International size	XXS	XS	S	M	L	XL
Size RU	40	42	44	46	48	50

Material: 80% polyamide micro, 20% elastane

Sizes 28 (5-6 Y) – 36 (10-11 Y): fully front lined.
Sizes 38 (12-13 Y) – 50 (XL): fully front lined, pockets for cups.

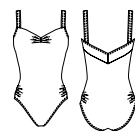
- Ice Blue
- Light Blue
- French Blue
- Bordeaux
- Coffee
- Dark Grey
- Light Navy
- Royal Blue
- Lavender
- Olive
- Tiffany
- Medium Taupe
- Lilac
- Pink
- Red
- Black
- White



Eva

Tank style leotard

Tank style cut leotard featuring full front lining and open U mid-back. Secure and comfortable straps. Fixed bust pinch. Adjustable leg line.



Youth sizes

DAD2002MPN Little Eva

Sizing by age	5-6Y	6-7Y	8-9Y	9-10Y	10-11Y	12-13Y
Size RU	28	30	32	34	36	38

Adult sizes

DA2002MPN Eva

International size	XXS	XS	S	M	L	XL
Size RU	40	42	44	46	48	50

Material: 80% polyamide micro, 20% elastane

Sizes 28 (5-6 Y) – 36 (10-11 Y): fully front lined.
Sizes 38 (12-13 Y) – 50 (XL): fully front lined, pockets for cups.

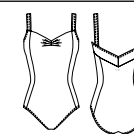
- Ice Blue
- Light Blue
- French Blue
- Bordeaux
- Coffee
- Dark Grey
- Light Navy
- Royal Blue
- Lavender
- Olive
- Tiffany
- Medium Taupe
- Lilac
- Pink
- Red
- Black
- White



Ellen

Tank style leotard

Tank style leotard featuring elegant princess seams and double V-back. Classic pattern with modern flair, secure and supportive straps. Sweetheart fixed pinch.



Youth sizes

DAD2002/1MPN Little Ellen

Sizing by age	5-6Y	6-7Y	8-9Y	9-10Y	10-11Y	12-13Y
Size RU	28	30	32	34	36	38

Adult sizes

DA2002/1MPN Ellen

International size	XXS	XS	S	M	L	XL
Size RU	40	42	44	46	48	50

Material: 80% polyamide micro, 20% elastane

Sizes 28 (5-6 Y) – 36 (10-11 Y): fully front lined.
Sizes 38 (12-13 Y) – 50 (XL): fully front lined, pockets for cups.

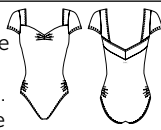
- Ice Blue
- Light Blue
- French Blue
- Bordeaux
- Coffee
- Dark Grey
- Light Navy
- Royal Blue
- Lavender
- Olive
- Tiffany
- Medium Taupe
- Lilac
- Pink
- Red
- Black
- White



Erica

Cap sleeve leotard

Fixed pinch front with sweetheart neckline, double V back cut. Cap sleeve leotard with adjustable hip line. Lining includes a removable bra cup pocket.



French Blue



Royal Blue

Youth sizes

DAD2003MPN Little Erica

Sizing by age	5-6Y	6-7Y	8-9Y	9-10Y	10-11Y	12-13Y
Size RU	28	30	32	34	36	38

Adult sizes

DA2003MPN Erica

International size	XXS	XS	S	M	L	XL
Size RU	40	42	44	46	48	50

Material: 80% polyamide micro, 20% elastane

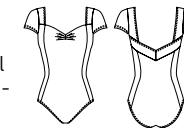
Sizes 28 (5-6 Y) – 36 (10-11 Y): fully front lined.
 Sizes 38 (12-13 Y) – 50 (XL): fully front lined, pockets for cups.

- Ice Blue
- Light Navy
- Lilac
- Light Blue
- Royal Blue
- Pink
- French Blue
- Lavender
- Red
- Bordeaux
- Olive
- Black
- Coffee
- Tiffany
- White
- Dark Grey
- Medium Taupe

Evita

Cap sleeve leotard

Cap sleeve leotard featuring square to V pinch fixed neck line. Beautiful lines created by the princess seams. Fully front lined with ballet leg cut. Double V back detailing.



Ice Blue



Pink

Youth sizes

DAD2003/1MPN Little Evita

Sizing by age	5-6Y	6-7Y	8-9Y	9-10Y	10-11Y	12-13Y
Size RU	28	30	32	34	36	38

Adult sizes

DA2003/1MPN Evita

International size	XXS	XS	S	M	L	XL
Size RU	40	42	44	46	48	50

Material: 80% polyamide micro, 20% elastane

Sizes 28 (5-6 Y) – 36 (10-11 Y): fully front lined.
 Sizes 38 (12-13 Y) – 50 (XL): fully front lined, pockets for cups.

- Ice Blue
- Light Navy
- Lilac
- Light Blue
- Royal Blue
- Pink
- French Blue
- Lavender
- Red
- Bordeaux
- Olive
- Black
- Coffee
- Tiffany
- White
- Dark Grey
- Medium Taupe

Effie

Cap sleeve leotard

A breathtaking mesh sleeve and V back detail leotard with princess seams and a gorgeous ballet leg cut. Mesh sleeve is featured in four way stretch Italian tulle, the sleeve is not hemmed for comfort.



Light Navy



Lavender

Youth sizes

DAD2003/2MPN Little Effie

Sizing by age	5-6Y	6-7Y	8-9Y	9-10Y	10-11Y	12-13Y
Size RU	28	30	32	34	36	38

Adult sizes

DA2003/2MPN Effie

International size	XXS	XS	S	M	L	XL
Size RU	40	42	44	46	48	50

Material: 80% polyamide micro, 20% elastane

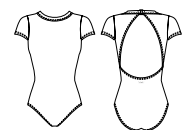
Sizes 28 (5-6 Y) – 36 (10-11 Y): fully front lined.
 Sizes 38 (12-13 Y) – 50 (XL): fully front lined, pockets for cups.

- Ice Blue
- Light Navy
- Lilac
- Light Blue
- Royal Blue
- Pink
- French Blue
- Lavender
- Red
- Bordeaux
- Olive
- Black
- Coffee
- Tiffany
- White
- Dark Grey
- Medium Taupe

Earie

Cap sleeve leotard

High neck cap sleeve leotard with back of the neck closure. Ballet leg cut and classic lines. All Italian materials, latest pattern.



Red



Bordeaux

Youth sizes

DAD2004MPN Little Earie

Sizing by age	5-6Y	6-7Y	8-9Y	9-10Y	10-11Y	12-13Y
Size RU	28	30	32	34	36	38

Adult sizes

DA2004MPN Earie

International size	XXS	XS	S	M	L	XL
Size RU	40	42	44	46	48	50

Material: 80% polyamide micro, 20% elastane

Sizes 28 (5-6 Y) – 34 (9-10 Y): fully front lined.
 Sizes 36 (10-11 Y) – 50 (XL): fully front lined, pockets for cups.

- Ice Blue
- Light Navy
- Lilac
- Light Blue
- Royal Blue
- Pink
- French Blue
- Lavender
- Red
- Bordeaux
- Olive
- Black
- Coffee
- Tiffany
- White
- Dark Grey
- Medium Taupe

Little Emma

Camisole dress

This delicate skirted leotard features an adjustable pinch bust line, a mesh back insert and adjustable straps. Attached mesh skirt is 8" inches long in the front and 10" inches in the back on size 10-11.



Youth sizes

DAD2001/2MPJUN Little Emma

Sizing by age	4-5Y	5-6Y	6-7Y	8-9Y	9-10Y	10-11Y	12-13Y
Size RU	26	28	30	32	34	36	38

Material: 80% polyamide micro, 20% elastane

Sizes 26 (4-5 Y) – 38 (12-13 Y): fully front lined.

- Ice Blue
- Light Blue
- French Blue
- Bordeaux
- Coffee
- Dark Grey
- Light Navy
- Royal Blue
- Lavender
- Olive
- Tiffany
- Lilac
- Pink
- Red
- Black
- White
- Medium Taupe



Little Emory

Cap sleeve dress

This feminine cap sleeve skirted leotard has all the sweet frills: a set pinch at the bust line, princess seams, and a double V back. The attached mesh skirt is 8" inches long in the front and 10" inches in the back on size 10-11.



Youth sizes

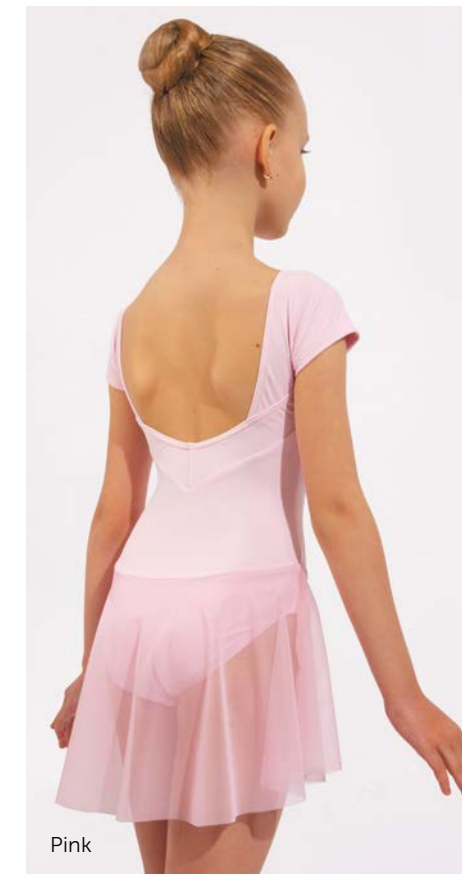
DAD2003/1MPJUN Little Emory

Sizing by age	4-5Y	5-6Y	6-7Y	8-9Y	9-10Y	10-11Y	12-13Y
Size RU	26	28	30	32	34	36	38

Material: 80% polyamide micro, 20% elastane

Sizes 26 (4-5 Y) – 38 (12-13 Y): fully front lined.

- Ice Blue
- Light Blue
- French Blue
- Bordeaux
- Coffee
- Dark Grey
- Light Navy
- Royal Blue
- Lavender
- Olive
- Tiffany
- Lilac
- Pink
- Red
- Black
- White
- Medium Taupe



Little Emerald

Tank style dress

Traditional tank style skirted leotard has the perfect details: princess seams, a set pinch at the bust line, and a double V back. Attached mesh skirt is 8" inches in the front and 10" inches long in the back on size 10-11.



Youth sizes

DAD2002/1MPJUN Little Emerald

Sizing by age	4-5Y	5-6Y	6-7Y	8-9Y	9-10Y	10-11Y	12-13Y
Size RU	26	28	30	32	34	36	38

Material: 80% polyamide micro, 20% elastane

Sizes 26 (4-5 Y) – 38 (12-13 Y): fully front lined.

- Ice Blue
- Light Blue
- French Blue
- Bordeaux
- Coffee
- Dark Grey
- Light Navy
- Royal Blue
- Lavender
- Olive
- Tiffany
- Lilac
- Pink
- Red
- Black
- White
- Medium Taupe





Practice tutu

5-Layer Tutu skirt

Adult sizes

0455/3N

Practice tutu

7-Layer Tutu skirt

Adult sizes

0455N

Practice tutu

10-Layer Tutu skirt

Adult sizes

0460N

International size	XXS	XS	S	M	L	XL
Size RU	40	42	44	46	48	50

Material: 100% nylon

Practice tutu

4-Layer Tutu skirt

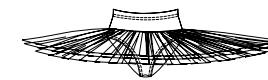
Youth sizes

0455/1N

Sizing by age	5-6Y	6-7Y	8-9Y	9-10Y	10-11Y	12-13Y
Size RU	28	30	32	34	36	38

Material: 100% nylon

Practice tutu with built in ruffled panty. Featuring Italian and English tulle. Our tutus are made by hand by the most skilled tutu makers in the world.



Bianco 010	Cerise 024	Mela 038	Viola 028
Seta 008	Ciclamino 035	Verde 021	Lilla 027
Avorio 009	Rosso 026	Olivo 040	Glicine 059
Panna 013	Bordeaux 030	Oceano 020	Castoro 043
Sabbia 007	Arancio 025	Nilo 032	Marrone 029
Pesco 014	Oro 023	Cielo 112	Grigio 033
Salmone 031	Limone 022	Pavone 016	Fumo 034
Rosa 011	Pistacchio 019	Azzuro 017	Nero 015
Pink 111	Cidro flo 003	Bleu 018	Azalea flo 001
	Verde flo 004	Marine 036	Arancio flo 002

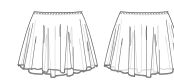


0455N Practice Tutu
7-Layer Tutu skirt
Pesco (014)

Echo

Mesh skirt

A new take on an old favorite, Italian four-way stretch mesh pull-on skirt. Hemless skirt is made for an easy length adjustment. Longer on back for a classic line.



Youth sizes

DAD2005N Little Echo

Sizing by age	5-6Y	6-7Y	8-9Y	9-10Y	10-11Y	12-13Y
Size RU	28	30	32	34	36	38

Adult sizes

DA2005N Echo

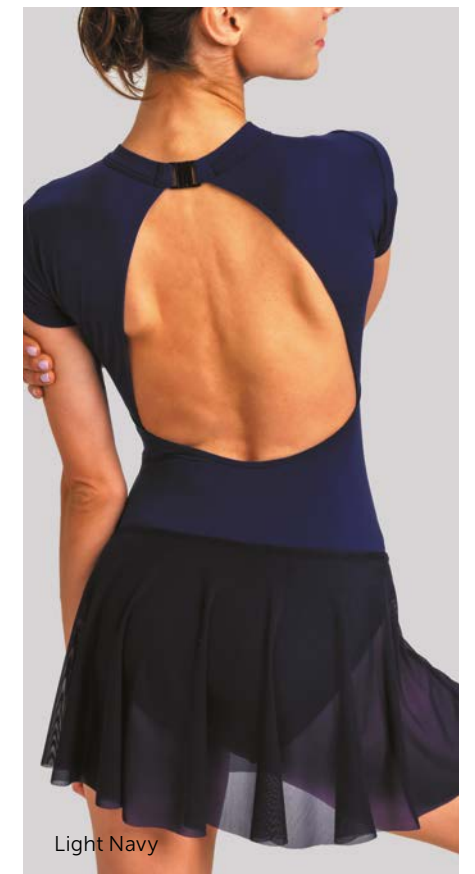
International size	XXS	XS	S	M	L	XL
Size RU	40	42	44	46	48	50

Material: 93% polyamide, 7% elastane.

- Ice Blue
- Light Blue
- French Blue
- Bordeaux
- Coffee
- Dark Grey
- Light Navy
- Royal Blue
- Lavender
- Olive
- Tiffany
- Medium Taupe
- Lilac
- Pink
- Red
- Black
- White



Ice Blue

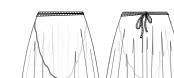


Light Navy

Eden

Mesh skirt with ties

A classic wrap skirt with stretch waistband, length can be adjusted on any size due to no hem edging. High quality Italian stretch mesh will not run when cut.



Youth sizes

DAD2006N Little Eden

Sizing by age	5-6Y	6-7Y	8-9Y	9-10Y	10-11Y	12-13Y
Size RU	28	30	32	34	36	38

Adult sizes

DA2006N Eden

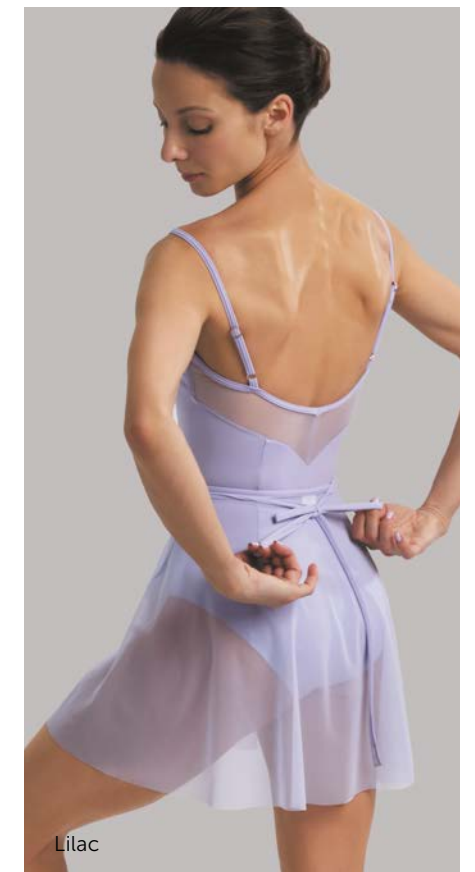
International size	XXS	XS	S	M	L	XL
Size RU	40	42	44	46	48	50

Material: 93% polyamide, 7% elastane.

- Ice Blue
- Light Blue
- French Blue
- Bordeaux
- Coffee
- Dark Grey
- Light Navy
- Royal Blue
- Lavender
- Olive
- Tiffany
- Medium Taupe
- Lilac
- Pink
- Red
- Black
- White



Bordeaux



Lilac

Preston

Tank top shirt

Classic style, made from our much beloved Italian microfiber, which won't fade. Available in multiple color choices.



Youth sizes

DAD3081MN Little Preston

Sizing by age	5-6Y	6-7Y	8-9Y	9-10Y	10-11Y	12-13Y
Size RU	28	30	32	34	36	38

Adult sizes

DA3081MN Preston

International size	XXS	XS	S	M	L	XL	2XL
Size RU	40	42	44	46	48	50	52

Material: 80% polyamide micro, 20% elastane

- Black
- White
- Dark Grey
- Bordeuax
- Light Navy



Black

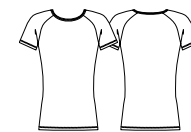


Black

Philip

Crew neck T-shirt

In our fantastic microfiber fabric, and offered in five colors to show off your personal style.



Youth sizes

DAD3084MN Little Philip

Sizing by age	10-11Y	12-13Y
Size RU	36	38

Adult sizes

DA3084MN Philip

International size	XXS	XS	S	M	L	XL	2XL
Size RU	40	42	44	46	48	50	52

Material: 80% polyamide micro, 20% elastane

- Black
- White
- Dark Grey
- Bordeuax
- Light Navy



Black

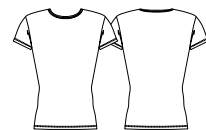


Black

Prince

T-shirt

Elegantly fitted cut on this short sleeve shirt gives a crisp clean silhouette. Ideal option for uniforming, with five colors for different studio levels.



Youth sizes

DAD3082MN Little Prince

Sizing by age	5-6Y	6-7Y	8-9Y	9-10Y	10-11Y	12-13Y
Size RU	28	30	32	34	36	38

Adult sizes

DA3082MN Prince

International size	XXS	XS	S	M	L	XL	2XL
Size RU	40	42	44	46	48	50	52

Material: 80% polyamide micro, 20% elastane

- Black
- White
- Dark Grey
- Bordeuax
- Light Navy



White



Light Navy

Pierre

V-front cap sleeve shirt

This model is made from our microfiber fabric, which gives you five color choices.



Youth sizes

DAD3086MN Little Pierre

Sizing by age	10-11Y	12-13Y
Size RU	36	38

Adult sizes

DA3086MN Pierre

International size	XXS	XS	S	M	L	XL	2XL
Size RU	40	42	44	46	48	50	52

Material: 80% polyamide micro, 20% elastane

- Black
- White
- Dark Grey
- Bordeuax
- Light Navy



Black



Black

Promise

Zip front unitard

Crew neck short sleeve mid thigh length unitard features our invisible zipper on the front down to the waist. Black only in our treasured microfiber.



Youth sizes

DAD3095MN Little Promise

Sizing by age	10-11Y	12-13Y
Size RU	36	38

Adult sizes

DA3095MN Promise

International size	XXS	XS	S	M	L	XL	2XL
Size RU	40	42	44	46	48	50	52

Material: 80% polyamide micro, 20% elastane

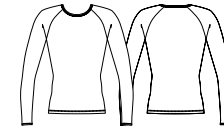
- Black



Palmer

Shirt

This sporty long sleeve shirt has a crew cut neck and extra stitching detail. Available in several colors in our marvelous microfiber.



Youth sizes

DAD3087MN Little Palmer

Sizing by age	10-11Y	12-13Y
Size RU	36	38

Adult sizes

DA3087MN Palmer

International size	XXS	XS	S	M	L	XL	2XL
Size RU	40	42	44	46	48	50	52

Material: 80% polyamide micro, 20% elastane

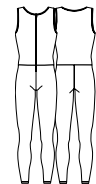
- Black
- White
- Dark Grey
- Bordeaux
- Light Navy



Pacey

Zip front unitard

Our tank scoop neck full length unitard comes in four different color combinations, or solid black if you prefer. Invisible zipper on the front down to the waist line allows ease of wear. It's so comfortable, you'll practically live in it!



Youth sizes

DAD3098MN Little Pacey

Sizing by age	10-11Y	12-13Y
Size RU	36	38

Adult sizes

DA3098MN Pacey

International size	XXS	XS	S	M	L	XL	2XL
Size RU	40	42	44	46	48	50	52

Material: 80% polyamide micro, 20% elastane

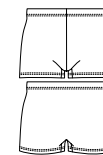
- Black/Olive
- Black/Bordeaux
- Black/Light Navy
- Black/Dark Grey
- Black/Black



Patrissio

Short shorts

These precision cut micro shorts are designed to move. Form to the body with the perfect touch of lycra. Five choices for a spark of color.



Youth sizes

DAD3091MN Little Patrissio

Sizing by age	5-6Y	6-7Y	8-9Y	9-10Y	10-11Y	12-13Y
Size RU	28	30	32	34	36	38

Adult sizes

DA3091MN Patrissio

International size	XXS	XS	S	M	L	XL	2XL
Size RU	40	42	44	46	48	50	52

Material: 80% polyamide micro, 20% elastane

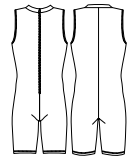
- Black
- White
- Dark Grey
- Bordeaux
- Light Navy



Pavlo

Zip front unitard

High neck sleeveless bike length unitard features our invisible zipper on the front down to the waist. Only available in Black in our super soft microfiber material.



Youth sizes

DAD3094MN Little Pavlo

Sizing by age	10-11Y	12-13Y
Size RU	36	38

Adult sizes

DA3094MN Pavlo

International size	XXS	XS	S	M	L	XL	2XL
Size RU	40	42	44	46	48	50	52

Material: 80% polyamide micro, 20% elastane

● Black



Black

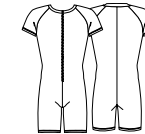


Black

Pace

Zip front unitard

This eye catching stunner of a bike length unitard has just the right amount of velvet on the short sleeve, plus our impeccable invisible zipper down to the waist on the front. Available in Black only.



Youth sizes

DAD3096VMN Little Pace

Sizing by age	10-11Y	12-13Y
Size RU	36	38

Adult sizes

DA3096VMN Pace

International size	XXS	XS	S	M	L	XL	2XL
Size RU	40	42	44	46	48	50	52

Material: 80% polyamide micro, 20% elastane

● Black



Black

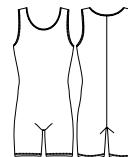


Black

Parth

Unitard

This scoop neck tank sleeve mid thigh length unitard has you covered. Available in Black only in our incredible microfiber fabric.



Youth sizes

DAD3093MN Little Parth

Sizing by age	10-11Y	12-13Y
Size RU	36	38

Adult sizes

DA3093MN Parth

International size	XXS	XS	S	M	L	XL	2XL
Size RU	40	42	44	46	48	50	52

Material: 80% polyamide micro, 20% elastane

● Black



Black

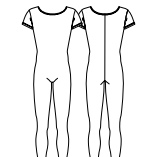


Black

Prophet

Zip front unitard

Short sleeve scoop neck ankle length unitard has our very strong invisible zipper down the front to the waist line. Perfect for a long day full of classes and/or rehearsal. Black only.



Youth sizes

DAD3097MN Little Prophet

Sizing by age	10-11Y	12-13Y
Size RU	36	38

Adult sizes

DA3097MN Prophet

International size	XXS	XS	S	M	L	XL	2XL
Size RU	40	42	44	46	48	50	52

Material: 80% polyamide micro, 20% elastane

● Black



Black

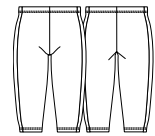


Black

Pedro

Bike shorts

Splendid two tone bike shorts hit just above the knee for a fashion forward look. Four fun color combinations to choose from.



Youth sizes

DAD3092MN Little Pedro

Sizing by age	5-6Y	6-7Y	8-9Y	9-10Y	10-11Y	12-13Y
Size RU	28	30	32	34	36	38

Adult sizes

DA3092MN Pedro

International size	XXS	XS	S	M	L	XL	2XL
Size RU	40	42	44	46	48	50	52

Material: 80% polyamide micro, 20% elastane

- Black/Dark Grey ● Dark Grey/Black
- Tiffany/Lips ● Pony/Lavender



Tiffany/Lips



Dark Grey/Black

Prescott

Thong V-front shirt with attached dancebelt

Made in our magnificent microfiber and offered in five popular colors.



Youth sizes

DAD3089MN Little Prescott

Sizing by age	10-11Y	12-13Y
Size RU	36	38

Adult sizes

DA3089MN Prescott

International size	XXS	XS	S	M	L	XL	2XL
Size RU	40	42	44	46	48	50	52

Material: 80% polyamide micro, 20% elastane

- Black
- White
- Dark Grey
- Bordeaux
- Light Navy



Dark Grey



Bordeaux



DA3092MN Pedro
Bike shorts
Tiffany/Lips and Pony/Lavender

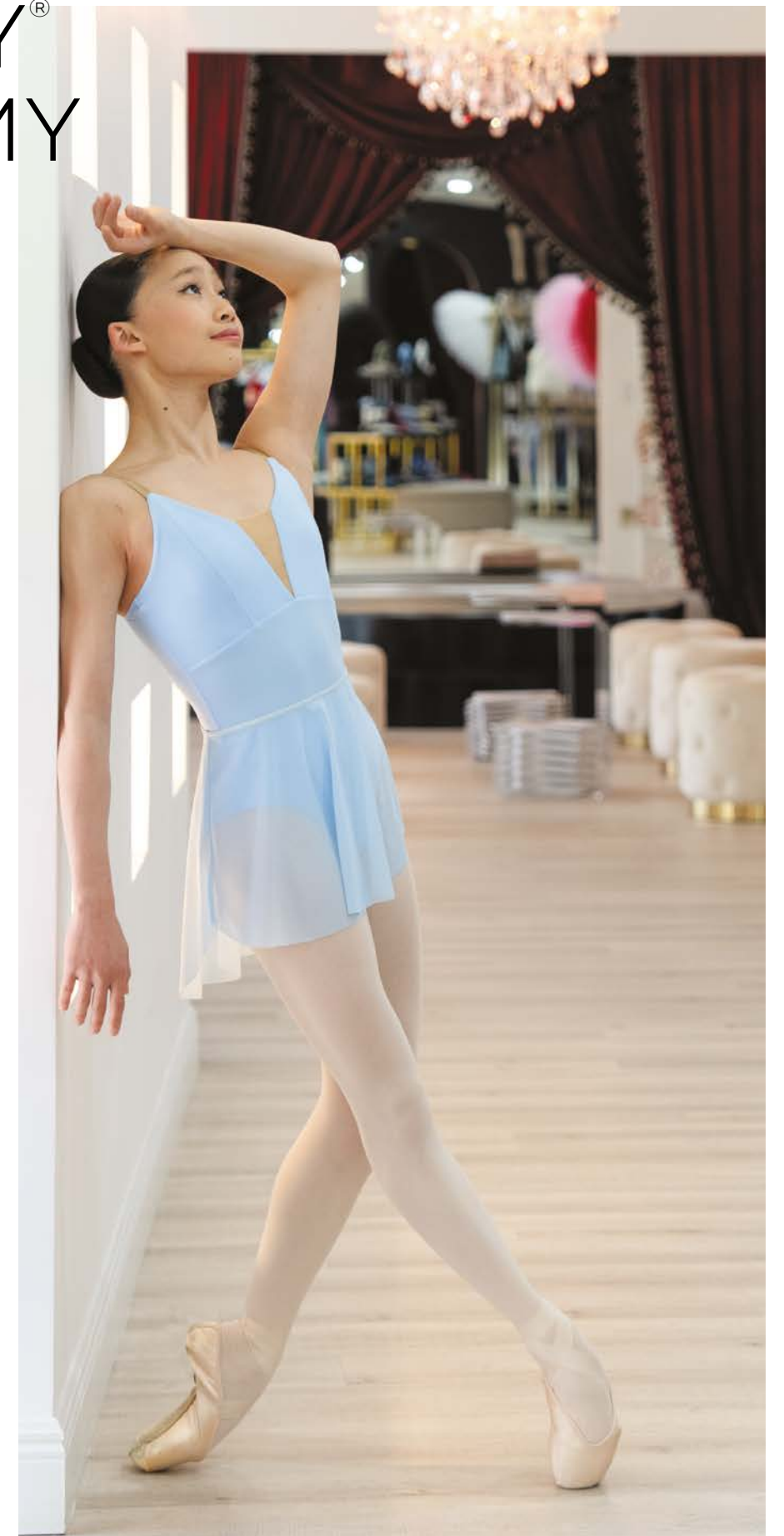


NIKOLAY® ACADEMY

The best teachers know that the key of future success is always in the details. This has become the main reason for collaboration of NIKOLAY® with the worldwide famous ballet schools.

The secret of NIKOLAY® uniform popularity is in its refined form. It's the carefully verified line of the back that allows the teacher to control the correct work of shoulders and neck, the form of hip cut that makes the movement easy, staying on the same place even during the most intensive exercises, and exceptional quality of fabrics.

All leotards are fully front lined and most feature removable bra cup pockets in the lining.





Caroline

Leotard with straps and mesh

Bolshoi Ballet Academy uniform. Adjustable pinch front. Mid back opening. 4-way stretch mesh detail. Secure adjustable camisole straps



Youth sizes

DAD1491/1MPN Little Caroline

Sizing by age	4-5Y	6-7Y	8-9Y	9-10Y	10-11Y	12-13Y
Size RU	28	30	32	34	36	38

Adult sizes

DA1491/1MPN Caroline

International size	XXS	XS	S	M	L	XL
Size RU	40	42	44	46	48	50

Material:

80% polyamide micro, 20% elastane.

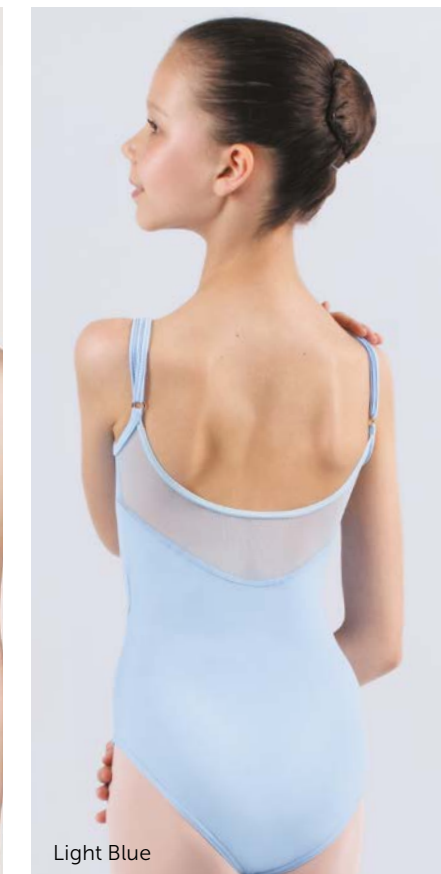
Sizes 32 (8-9 Y) – 36 (10-11 Y): fully front lined.

Sizes 38 (12-13 Y) – 50 (XL): fully front lined, pockets for cups.

- Ice Blue
- Light Blue
- Red
- Lilac
- Pink
- White
- Coffee
- Dark Blue
- Black



Lilac



Light Blue

Colette

Leotard with straps

Vaganova Ballet Academy uniform. Adjustable pinch front. Adjustable camisole straps. Classic ballet leg cut.



Youth sizes

DAD1491MPN Little Colette

Sizing by age	4-5Y	6-7Y	8-9Y	9-10Y	10-11Y	12-13Y
Size RU	28	30	32	34	36	38

Adult sizes

DA1491MPN Colette

International size	XXS	XS	S	M	L	XL
Size RU	40	42	44	46	48	50

Material:

80% polyamide micro, 20% elastane.

Sizes 32 (8-9 Y) – 36 (10-11 Y): fully front lined.

Sizes 38 (12-13 Y) – 50 (XL): fully front lined, pockets for cups.

- Ice Blue
- Light Blue
- Red
- Lilac
- Pink
- White
- Coffee
- Dark Blue
- Black



Pink



Coffee

Christal

Leotard with straps

Classic leotard with adjustable straps and princess seams on front and back that make the figure look even more graceful. Adjustable pinch front.



Youth sizes

DAD1001MPN Little Christal

Sizing by age	4-5Y	6-7Y	8-9Y	9-10Y	10-11Y	12-13Y
Size RU	28	30	32	34	36	38

Adult sizes

DA1001MPN Christal

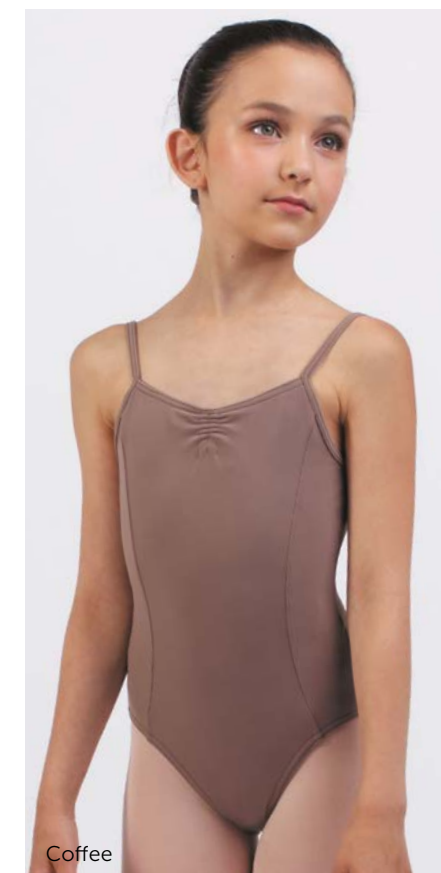
International size	XXS	XS	S	M	L	XL
Size RU	40	42	44	46	48	50

Material: 80% polyamide micro, 20% elastane

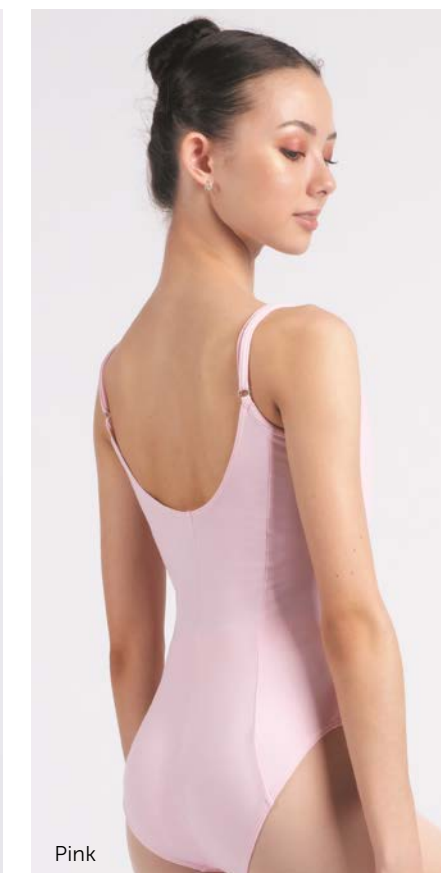
Sizes 32 (8-9 Y) – 36 (10-11 Y): fully front lined.

Sizes 38 (12-13 Y) – 50 (XL): fully front lined, pockets for cups.

- Ice Blue
- Light Blue
- Red
- Lilac
- Pink
- White
- Coffee
- Dark Blue
- Black



Coffee



Pink

Camilla

Camisole leotard

Best seller the world over!
Elegant back design.
Elastic detailing crisscrossing
on front. Adjustable straps.



Youth sizes

DA1258MPN Little Camilla

Sizing by age	10-11 Y	12-13 Y
Size RU	36	38

Adult sizes

DA1258MPN Camilla

International size	XXS	XS	S	M	L	XL
Size RU	40	42	44	46	48	50

Material:
80% polyamide micro, 20% elastane.

Sizes 36 (10-11 Y): fully front lined.
Sizes 38 (12-13 Y) – 50 (XL): fully front lined, pockets for cups.

- Ice Blue
- Dark Blue
- Coffee
- Black



Ice Blue

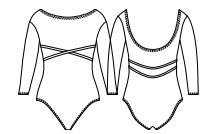


Ice Blue

Carissa

3/4 sleeve leotard

We added 3/4 length sleeves to our top seller DA1258MPN for winter time.
This lovely leotard will keep you warm.



Youth sizes

DA1260MPN Little Carissa

Sizing by age	10-11 Y	12-13 Y
Size RU	36	38

Adult sizes

DA1260MPN Carissa

International size	XXS	XS	S	M	L	XL
Size RU	40	42	44	46	48	50

Material:
80% polyamide micro, 20% elastane.

Fully front lined.

- Ice Blue
- Dark Blue
- Coffee
- Black



Coffee



Coffee

DA1258MPN Camilla
Camisole leotard
Coffee



Charlotte

Camisole leotard

#1 BEST SELLER
Style preferable for elder classes and performances – the straps made of nude elastic and the front detail create a slim and airy silhouette.



Youth sizes

DAD1930MPN Little Charlotte

Sizing by age	6-7Y	8-9Y	9-10Y	10-11Y	12-13Y
Size RU	30	32	34	36	38

Adult sizes

DA1930MPN Charlotte

International size	XXS	XS	S	M	L	XL
Size RU	40	42	44	46	48	50

Material:

80% polyamide micro, 20% elastane.

All sizes fully front lined.

- Pink
- Olive
- Royal Blue
- Red
- Coffee
- White
- Lilac
- Black
- Light Navy
- Ice Blue
- Dark Blue
- Light Blue
- Medium Taupe



Celine

Mesh skirt

Short mesh skirt with wide elastic belt to underline the waist – very popular mock wrap design loved by dancers all over.



Youth sizes

DAD1945N Little Celine

Sizing by age	8-9 Y	9-10 Y	10-11 Y	12-13 Y
Size RU	32	34	36	38

Adult sizes

DA1945N Celine

International size	XXS	XS	S	M	L	XL
Size RU	40	42	44	46	48	50

Material:

Belt: 80% polyamide micro, 20% elastane.

Skirt: 93% polyamide, 7% elastane.

Length: 13"

- Pink
- Olive
- Royal Blue
- Red
- Coffee
- White
- Lilac
- Black
- Light Navy
- Ice Blue
- Medium Taupe



Carlotta

Leotard with long sleeve

Created in 2019 for qualification exams at the Bolshoi Ballet Academy, this model drew rave reviews.



Youth sizes

DAD1931MN Little Carlotta

Sizing by age	10-11 Y	12-13 Y
Size RU	36	38

Adult sizes

DA1931MN Carlotta

International size	XXS	XS	S	M	L	XL
Size RU	40	42	44	46	48	50

Material:

80% polyamide micro, 20% elastane.

- Pink
- Olive
- Royal Blue
- Red
- Coffee
- White
- Lilac
- Black
- Light Navy
- Ice Blue
- Dark Blue
- Light Blue
- Medium Taupe



Calyssa

Folk and character skirt

Long two-layer skirt of mesh with tulle underneath was made by order of Vaganova Academy for character and folk dance. Wide elastic belt can be fixed on waist or hips and airy mesh allows the dancer to feel free during any movements.



Youth sizes

DAD1478N Little Calyssa

Sizing by age	8-9 Y	9-10 Y	10-11 Y	12-13 Y
Size RU	32	34	36	38

Adult sizes

DA1478N Calyssa

International size	XXS	XS	S	M	L	XL
Size RU	40	42	44	46	48	50

Material: 93% polyamide, 7% elastane.

Size: 8-9 Y – 13,8", Size: 9-10 Y – 15,75",

Size: 11-13 Y – 17,7", Size: XXS – 19,7",

Size: XS-XL – 21,65"


- White
- Royal Blue
- Light Blue
- Pink
- Coffee
- Ice Blue
- Lilac
- Black
- Medium Taupe





KNITTED WARM-UP


NIKOLAY® knitwear collection was a best seller last year, and we're sure it will be just as popular this year, as we have created another beautiful line and made it even better.


The premium-quality Italian yarn is tested several times before knitting. The quality department carefully checks each garment during production and when finished. The highest quality is approved by professional dancers and happy ballet moms, who admire the durability.

 High-technology production processing makes the ready garment soft and not itchy.

 Super comfort is achieved by purl-knitting technique that allows the garment to follow body curvature perfectly.

 Color stays bright after dozens of washing cycles.

 ECO. The yarn is made by a sustainable factory, which uses innovative dyeing on cones that can achieve 50% of water saving compared to conventional dyeing. Also the large part of the energy is supplied by the photovoltaic system installed on the roof of the plant.

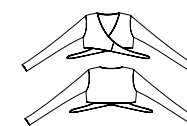
 The yarn complies with the German, Italian and European Laws regarding the prohibition of the use of toxic substances.



Thea

Wrap sweater

Wrap yourself in ultimate comfort with "Thea," our elegant wrap sweater, designed to match this year's collection colors perfectly. Made from an ultra-soft, luxurious knit, it feels just as good as it looks, offering a warm embrace you'll never want to take off. The perfect piece to layer over any dance outfit for a touch of style and coziness.



Youth sizes

DAD5030N Little Thea

Sizing by age	10-11 Y	12-13 Y
Size RU	36	38

Adult sizes

DA5030N Thea

International size	XXS	XS	S	M	L
Size RU	40	42	44	46	48

Material: 45% viscose, 18% nylon, 35% polyester, 2% spandex

- Black
- Tea Rosa
- Sage



Tea Rosa

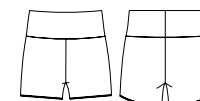


Tea Rosa

Thelma

Shorts

Get ready to dance in comfort with "Thelma," our brand-new knit shorts featuring a stylish wide waistband.



These shorts are crafted from a velvety soft knit that's gentle to the touch, offering a cozy feel while enhancing your silhouette. Available in coordinating colors to match the entire collection, Thelma effortlessly blends comfort, style, and function for every dancer.

Youth sizes

DAD5031N Little Thelma

Sizing by age	10-11 Y	12-13 Y
Size RU	36	38

Adult sizes

DA5031N Thelma

International size	XXS	XS	S	M	L
Size RU	40	42	44	46	48

Material: 45% viscose, 18% nylon, 35% polyester, 2% spandex

- Black
- Tea Rosa
- Sage



Tea Rosa

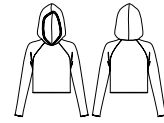


Sage

Thomasina

Hooded sweater

Elevate your warm-up game with "Thomasina," a chic hooded sweater designed to keep you cozy. The soft, knitted fabric feels like a gentle hug, while the hood adds a modern twist. Perfectly aligned with this year's palette, this sweater is both stylish and snug—an essential addition for dancers who crave comfort without compromising on elegance.



Tea Rosa



Tea Rosa

Youth sizes

DAD5038N Little Thomasina

Sizing by age	10–11 Y	12–13 Y
Size RU	36	38

Adult sizes

DA5038N Thomasina

International size	XXS	XS	S	M	L
Size RU	40	42	44	46	48

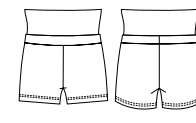
Material: 45% viscose, 18% nylon, 35% polyester, 2% spandex

- Black
- Tea Rosa
- Sage

Thalia

Shorts

Meet Thalia: high-waisted knit shorts designed for ultimate comfort and style. Wear them up for added warmth or roll them down for a versatile look that provides sacral support. With a trendy silhouette and thoughtful finishing touches, Thalia combines cozy warmth with on-trend fashion, keeping you stylish and comfortable wherever you go.



Tea Rosa



Black

Youth sizes

DAD5033N Little Thalia

Sizing by age	10–11 Y	12–13 Y
Size RU	36	38

Adult sizes

DA5033N Thalia

International size	XXS	XS	S	M	L
Size RU	40	42	44	46	48

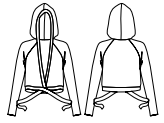
Material: 45% viscose, 18% nylon, 35% polyester, 2% spandex

- Black
- Tea Rosa
- Sage

Theodora

Hooded wrap sweater

Meet "Theodora," a graceful blend of style and warmth. This hooded wrap sweater wraps you up in the ultra-soft knit fabric of the season, providing both comfort and a touch of flair. Its flattering wrap-around design and color-coordinated style make it an effortless choice for any dancer looking to stay fashionable while warming up or cooling down.



Tea Rosa



Tea Rosa

Youth sizes

DAD5032N Little Theodora

Sizing by age	10–11 Y	12–13 Y
Size RU	36	38

Adult sizes

DA5032N Theodora

International size	XXS	XS	S	M	L
Size RU	40	42	44	46	48

Material: 45% viscose, 18% nylon, 35% polyester, 2% spandex

- Black
- Tea Rosa
- Sage

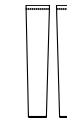
Leg warmers

Say hello to cozy elegance with your choice of three luxurious legwarmers featuring a secure elastic fixer at the top. Designed to provide warmth and flexibility, all three styles are made from soft, breathable knit to keep you comfortable while moving effortlessly through every plie and pirouette.

Thandi and Theresa offer a slim fit at the ankle while Theodosia has an updated fashion with an open flared finish.

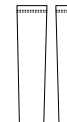
DA5034N Theresa

One size: 60 cm / 23.6 in



DA5035N Thandi

One size: 80 cm / 31.5 in



DA5039N Theodosia

One size: 80 cm / 31.5 in slightly flared



Material: 45% viscose, 18% nylon, 35% polyester, 2% spandex

- Black
- Tea Rosa
- Sage



Theodosia
Black



Thandi
Tea Rosa

VESTS

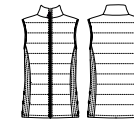
Envelop yourself in cozy comfort with our new vest, CLOUD! This unisex quilted puffer vest is offered in four classic colors and will keep you wrapped in warmth. Available in children's and adult sizes, the CLOUD will surround you in supple softness. Features include two small zippered pockets for security as well as our delightful pointe shoe zipper pull on the main zipper. In addition, we've included three snaps on each side for individual length options. For the ultimate in luxury, slip into the CLOUD!



Cloud

Vest

Meet CLOUD: the ultimate vest for dancers, designed to move seamlessly from rehearsal to relaxation at the barre. Filled with exceptional warmth and comfort, it's so cozy that you'll want to sleep in it too! Perfect for layering, this versatile vest is a must-have for every dancer's wardrobe, adding both style and comfort wherever you go.



Youth sizes

CV001N Little Cloud

Sizing by age	8-10 Y	10-12 Y
Size RU	32-34	36-38

Adult sizes

CV001N Cloud

International size	XXS	XS	S	M	L
Size RU	40	42	44	46	48

Material: 100% polyester

- Black
- Pink
- Light Blue
- Coffee



Black



Light Blue



Pink



Pink

Nikolay®



HEAT RETENTION WEAR

The Heat Retention Wear new collection is designed with the fusion of high-tech materials and insider knowledge of the dancers' needs. With the membrane coated fabric you can easily minimize the time needed for workout.



Membrane fabric
High-tech membrane blocks the air inside being soft and comfortable against your skin.



Odor control
Premium quality membrane fabric captures odor molecules and keeps you feeling fresh during workout.



100% Thermal isolation
Keeps heat underneath the fabric. Stimulates fast fat burn and muscles warm-up.



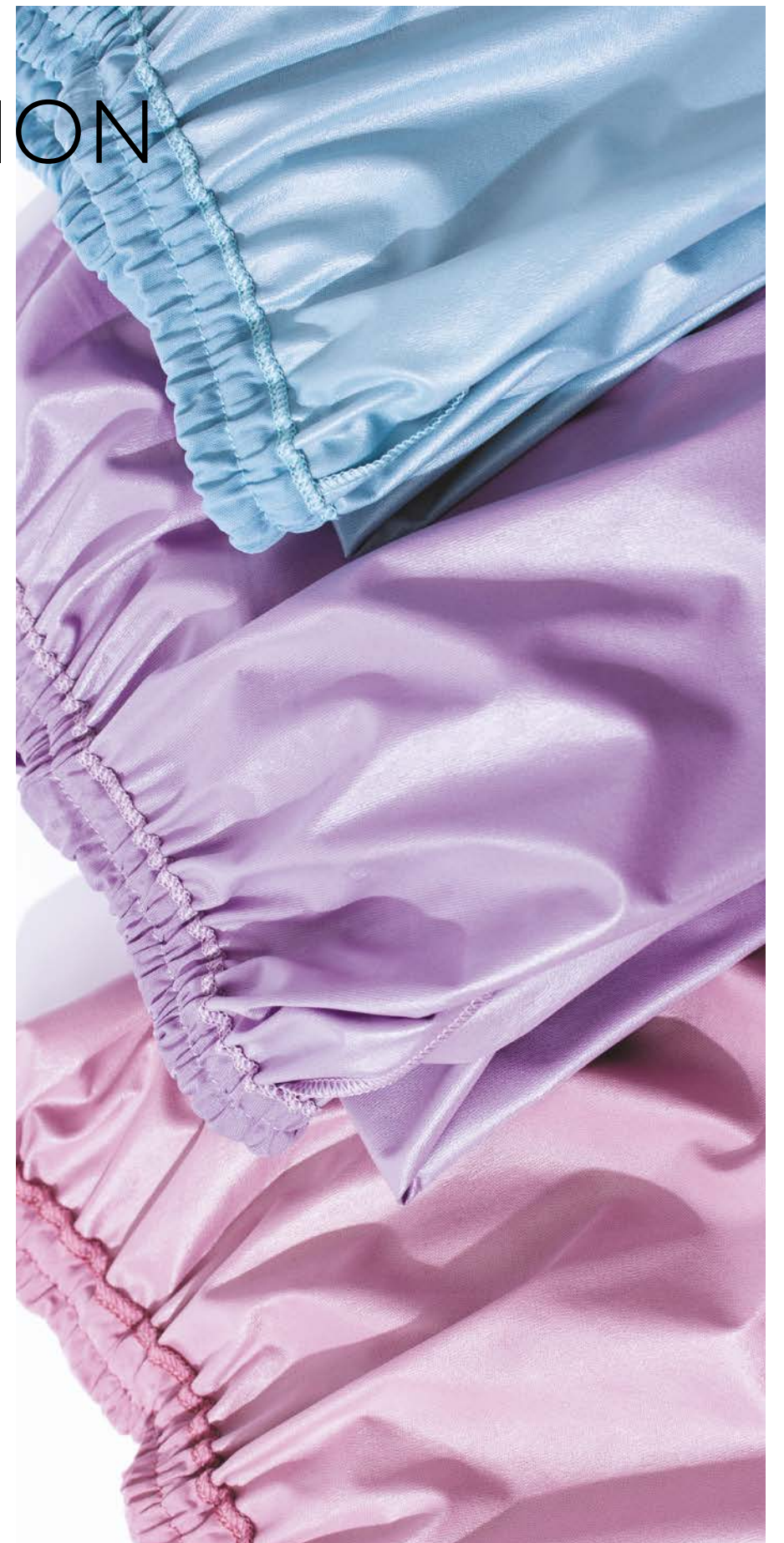
Bi-stretch
Special bi-stretch technology makes you feel free during stretching and high active exercises.



Super quiet
Silent and soft-hand material. Easy movements and comfortable feeling.



Machine washable
Any type of stains easy to remove with warm water even by hand





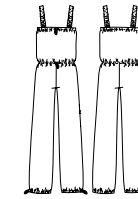
0403N Bowie-1
Unitard with sauna effect
Grey and Orchid Mist

Bowie-1

Unitard with sauna effect

Full length unitard featuring comfortable straps over the shoulder, cinch top, waist and cuff.

Now comes with only a small NIKOLAY® logo.



0403N Bowie-1

Youth sizes

Sizing by age	10–11 Y	12–13 Y
Size RU	36	38

Adult sizes

International size	XXS	XS	S	M	L	XL	2XL
Size RU	40	42	44	46	48	50	52

Material: 100% polyester

- Ice Blue
- Grey
- Orchid Mist
- Mirtillo
- Dusty Pink
- Laguna
- Black



Ice Blue

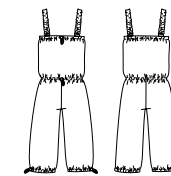


Orchid Mist

Bobbie-1

Shortard with sauna effect

Short unitard with sauna effect is made of 100% polyester material featuring heat retention membrane, comfortable shoulder straps, waist and above the knee leg cinch. Now comes with only a small NIKOLAY® logo.



0404N Bobbie-1

Youth sizes

Sizing by age	10–11 Y	12–13 Y
Size RU	36	38

Adult sizes

International size	XXS	XS	S	M	L	XL	2XL
Size RU	40	42	44	46	48	50	52

Material: 100% polyester

- Ice Blue
- Grey
- Orchid Mist
- Mirtillo
- Dusty Pink
- Laguna
- Black



Mirtillo



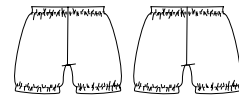
Orchid Mist

Bae-1

Shorts with sauna effect

New style added — short shorts, comfortable waistband and high tech heat retaining membrane.

Fashionable and fun colors. Featuring a small NIKOLAY® logo.



0408N Bae-1

Youth sizes

Sizing by age	10–11 Y	12–13 Y
Size RU	36	38

Adult sizes

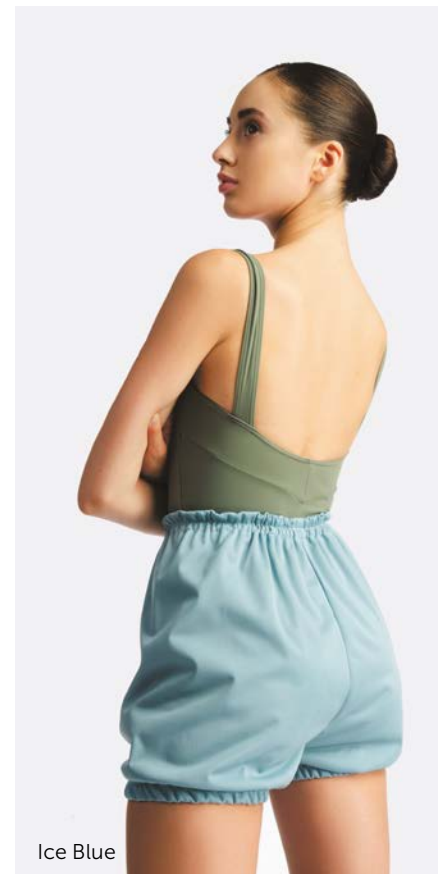
International size	XXS	XS	S	M	L	XL	2XL
Size RU	40	42	44	46	48	50	52

Material: 100% polyester

- Ice Blue
- Grey
- Orchid Mist
- Mirtillo
- Dusty Pink
- Laguna
- Black



Mirtillo

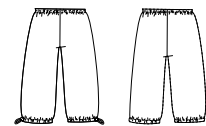


Ice Blue

Blossom-1

Knee length shorts with sauna effect

Knee length shorts with toggle on the cuff and comfortable elastic waistband. Heat retention membrane and fashionable colors. Now comes with only a small NIKOLAY® logo.



0406N Blossom-1

Youth sizes

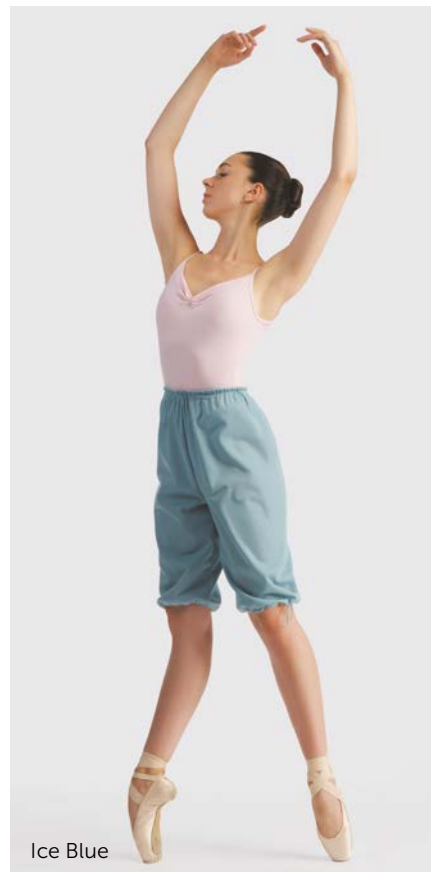
Sizing by age	10–11 Y	12–13 Y
Size RU	36	38

Adult sizes

International size	XXS	XS	S	M	L	XL	2XL
Size RU	40	42	44	46	48	50	52

Material: 100% polyester

- Ice Blue
- Grey
- Orchid Mist
- Mirtillo
- Dusty Pink
- Laguna
- Black



Ice Blue



Laguna

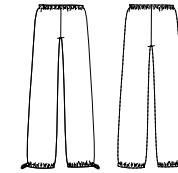
Bliss-1

Pants with sauna effect

Full leg pants with comfortable waist elastic and cinch on waist as well as cuff.

Bi-stretch material is comfortable and long lasting.

Now comes with only a small NIKOLAY® logo.



0405N Bliss-1

Youth sizes

Sizing by age	10–11 Y	12–13 Y
Size RU	36	38

Adult sizes

International size	XXS	XS	S	M	L	XL	2XL
Size RU	40	42	44	46	48	50	52

Material: 100% polyester

- Ice Blue
- Grey
- Orchid Mist
- Mirtillo
- Dusty Pink
- Laguna
- Black



Dusty Pink



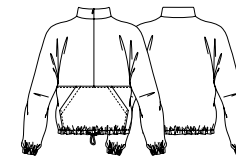
Ice Blue

Blaze

Jacket with sauna effect

Blaze is a new addition to our best selling heat retention collection.

This pull-over jacket features a 3/4 zipper, cinched cuffs and waistline. This is the perfect garment to keep your muscles warm and ready to perform between classes or performances. High heat retention membrane will make sure that no heat escapes.



0410N Blaze

Youth sizes

Sizing by age	10–11 Y	12–13 Y
Size RU	36	38

Adult sizes

International size	XXS	XS	S	M	L	XL	2XL
Size RU	40	42	44	46	48	50	52

Material: 100% polyester

- Ice Blue
- Grey
- Orchid Mist
- Mirtillo
- Dusty Pink
- Laguna
- Black



Mirtillo



Laguna

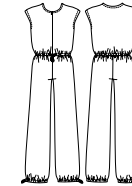


0412N Brett
Unitard with sauna effect
Ice Blue

Brett

Unitard with sauna effect

Brett is a sauna effect heat retention collection unitard featuring toggle pull waistline and ankle cuffs. Front zipper on upper body and extended sleeve on shoulder. Our high-end Heat Retention collection is quiet and allows minimalistic stretch making it the most comfortable and high-tech saunawear anywhere.



0412N Brett

Youth sizes

Sizing by age	10-11 Y	12-13 Y
Size RU	36	38

Adult sizes

International size	XXS	XS	S	M	L	XL	2XL
Size RU	40	42	44	46	48	50	52

Material: 100% polyester

- Ice Blue
- Grey
- Orchid Mist
- Mirtillo
- Dusty Pink
- Laguna
- Black



Mirtillo



Laguna



Mirtillo

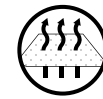


Laguna



SEAMLESS UNDERGARMENTS

When you are on stage, dancing the part of your dreams, your undergarments have their own role to perform — be invisible, soft as a feather and ensure proper hygiene of your body. That is what NIKOLAY® underwear does for every dancer.



Made from ultralight microfiber, they allow your body to breathe, draw out moisture and keep your skin dry and comfortable throughout hours of dancing.



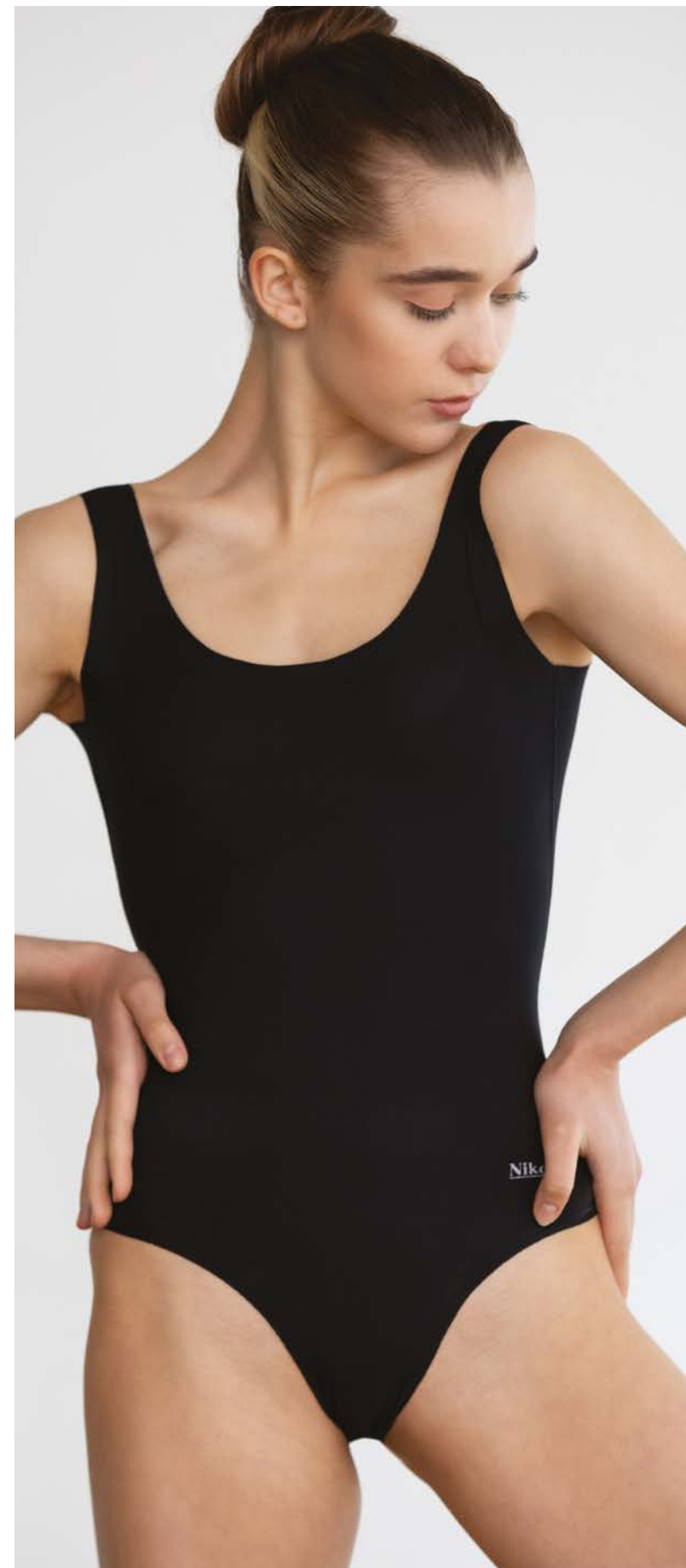
Meet the highest standards of hygiene, fend off infections and preserve the natural microclimate of your most sensitive areas.



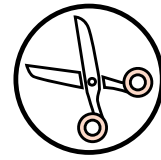
Tear and stain resistant, NIKOLAY® undergarments will preserve their elegant look after multiple uses and washings.

Take care of your body and achieve true greatness with NIKOLAY® seamless underwear.

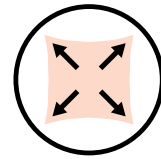




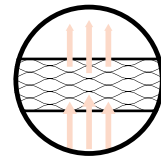
EACH DANCER CAN CUSTOMIZE THEIR UNDERGARMENT TO PERFECTLY FIT UNDER ANY GARMENT. DESIGNED TO BE INVISIBLE AND COMFORTABLE ON THE SKIN.



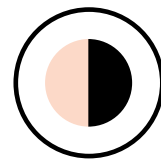
Perfect base for DIY — use scissors to make any form you need.



Stretchy — follows the shape of body during any movements.



Soft and breathable microfiber feels very comfortable on your skin.



Available in Black and Nude colors.

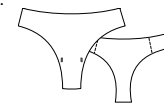


DA300PRN THONG SEAMLESS BRIEFS



Youth sizes			Adult sizes					
Sizing by age	10–11 Y	12–13 Y	International size	XXS	XS	S	M	L
Size RU	36	38	Size RU	40	42	44	46	48

86% polyamide, 14% elastane.
● Nude ● Black

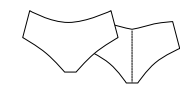


DA302PRN HIPSTER SEAMLESS BRIEFS



Youth sizes			Adult sizes					
Sizing by age	10–11 Y	12–13 Y	International size	XXS	XS	S	M	L
Size RU	36	38	Size RU	40	42	44	46	48

86% polyamide, 14% elastane.
● Nude ● Black

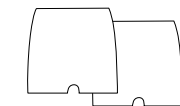


DA308PRN HIGH RISE SEAMLESS SHORTS

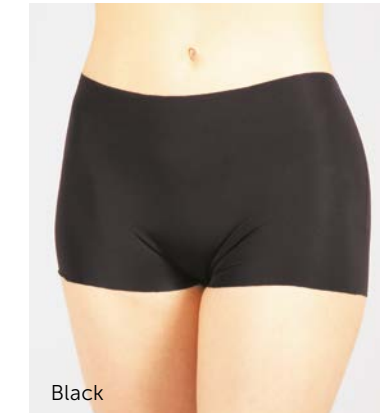


Youth sizes			Adult sizes						
Sizing by age	10–11 Y	12–13 Y	International size	XXS	XS	S	M	L	XL
Size RU	36	38	Size RU	40	42	44	46	48	50

86% polyamide, 14% elastane.
● Nude ● Black

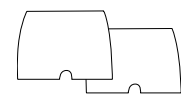


DA307PRN LOW RISE SEAMLESS SHORTS

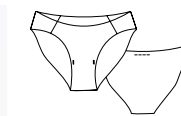


Youth sizes			Adult sizes						
Sizing by age	10–11 Y	12–13 Y	International size	XXS	XS	S	M	L	XL
Size RU	36	38	Size RU	40	42	44	46	48	50

86% polyamide, 14% elastane.
● Nude ● Black



DA3015MN SEAMLESS BRIEFS



Youth sizes								Adult sizes						
Sizing by age	5-6Y	6-7Y	8-9Y	9-10Y	10-11Y	12-13Y		International size	XXS	XS	S	M	L	XL
Size RU	28	30	32	34	36	38		Size RU	40	42	44	46	48	50

86% polyamide, 14% elastane.
● Nude ● Black

**DA303PRN
SEAMLESS LEOTARD**

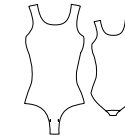


Black

Nude

Youth sizes						
Sizing by age	5-6Y	6-7Y	8-9Y	9-10Y	10-11Y	12-13Y
Size RU	28	30	32	34	36	38
Adult sizes						
International size	XXS	XS	S	M	L	XL
Size RU	40	42	44	46	48	50

86% polyamide, 14% elastane.
● Nude ● Black



**DA306PRN
SEAMLESS TOP**



Nude

Youth sizes						
Sizing by age	5-6Y	6-7Y	8-9Y	9-10Y	10-11Y	12-13Y
Size RU	28	30	32	34	36	38
Adult sizes						
International size	XXS	XS	S	M	L	XL
Size RU	40	42	44	46	48	50

86% polyamide, 14% elastane.
● Nude ● Black



**DA309PRN
SEAMLESS SUPPORT TOP**



Black

Youth sizes					
Sizing by age	10-11 Y	12-13 Y			
Size RU	36	38			
Adult sizes					
International size	XXS	XS	S	M	L
Size RU	40	42	44	46	48

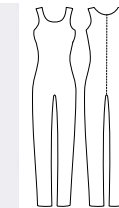
86% polyamide, 14% elastane.
● Nude ● Black



DA305PRN SEAMLESS UNITARD



Nude



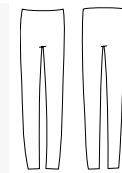
Youth sizes DAD305PRN			Adult sizes DA305PRN						
Sizing by age	10-11 Y	12-13 Y	International size	XXS	XS	S	M	L	XL
Size RU	36	38	Size RU	40	42	44	46	48	50

86% polyamide, 14% elastane.
● Nude ● Black

DA304PRN LEGGINGS



Black



Youth sizes			Adult sizes							
Sizing by age	10-11 Y	12-13 Y	International size	XXS	XS	S	M	L	XL	2XL
Size RU	36	38	Size RU	40	42	44	46	48	50	52

86% polyamide, 14% elastane.
● Nude ● Black



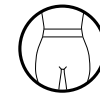


TIGHTS

NIKOLAY® tights highlight the exquisite lines of dancers' legs and demonstrate the work of their muscles.

They are produced from materials of superior quality and tailored to your needs:

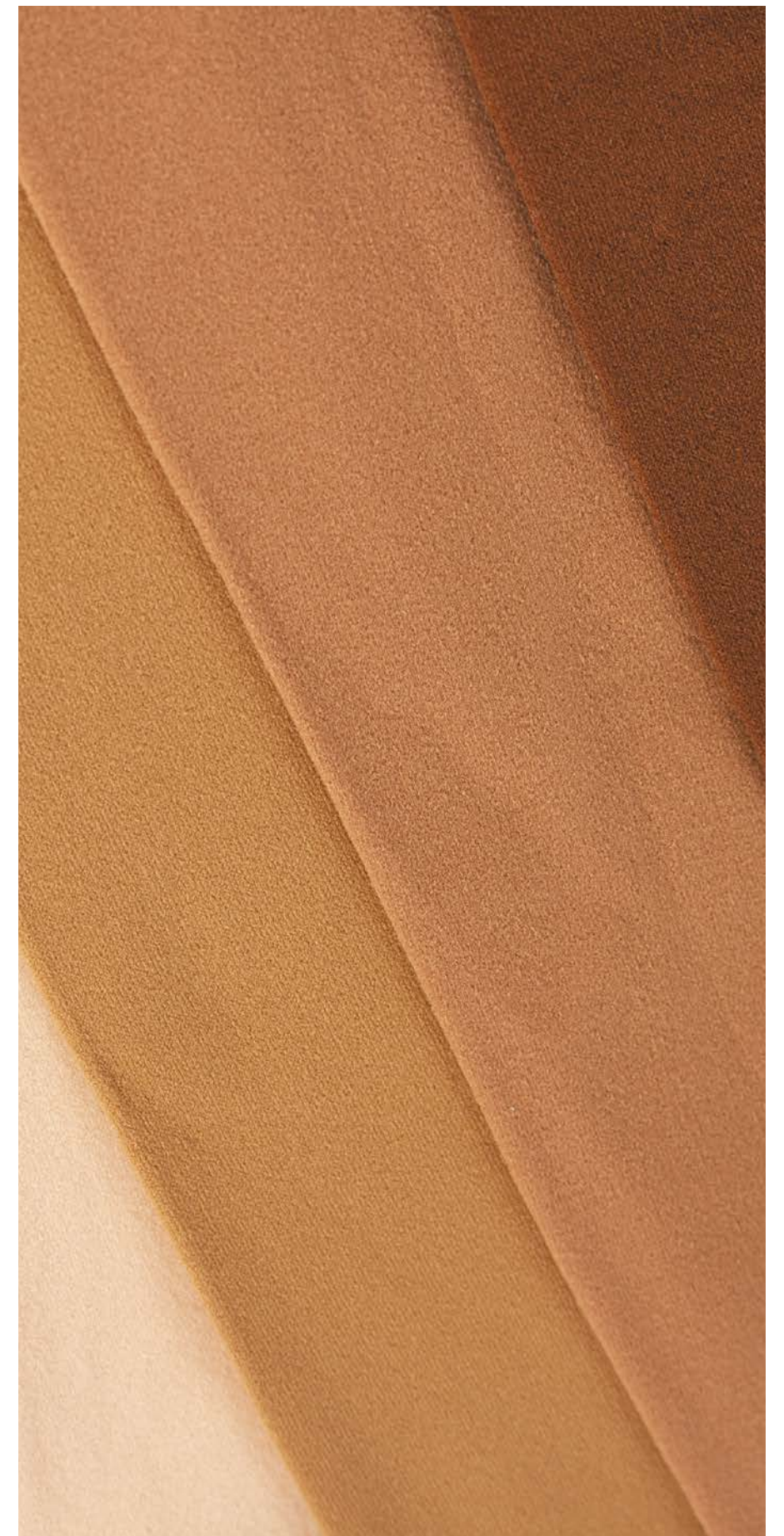
- unparalleled stretching features guaranteed by extremely flexible fabrics, threads and seams;
- resistant to abrasion, rip and tear, NIKOLAY® tights will stay with you for a record-long time;
- our tights maintain their shape and impeccable look throughout endless hours of training and rehearsals.



Do not roll or slide thanks to strong waistband.

If dance is a poetry of arms and legs, then our tights are the one piece that will make your body truly sing.

NIKOLAY®. WHERE QUALITY RHYMES WITH CHIC.





CONVERTIBLE MICROFIBER TIGHTS

Microfiber convertible tights. Comfortable generous opening under the arch. Microfiber knit-in waistband, with highest quality threads and elastane.

0050/0N

Youth size: 000, 00, 0
 Adult size: S, M, L, XL
 82% microfiber, 18% elastane.
 ● Light Pink ○ White ● Black
 ● Theatrical Pink ● Light Toast
 ● Classic Light Toast ● Dark Nude



Light Toast



Dark Nude

FOOTED MICROFIBER TIGHTS

Microfiber footed tights. Microfiber knit-in waistband, with highest quality threads and elastane.

0050N

Youth size: 000, 00, 0
 Adult size: S, M, L, XL
 82% microfiber, 18% elastane.
 ● Light Pink ○ White ● Black
 ● Theatrical Pink ● Light Toast
 ● Classic Light Toast ● Dark Nude



Dark Nude



Classic Light Toast

MESH SEAMED CONVERTIBLE TIGHTS

Exclusive knit tights. Real back seam. Comfortable under arch opening. Microfiber waistband.



Ballet Pink



Ballet Pink

0054/0N

Size: S, M, L
90% nylon, 10% spandex.
● Ballet Pink

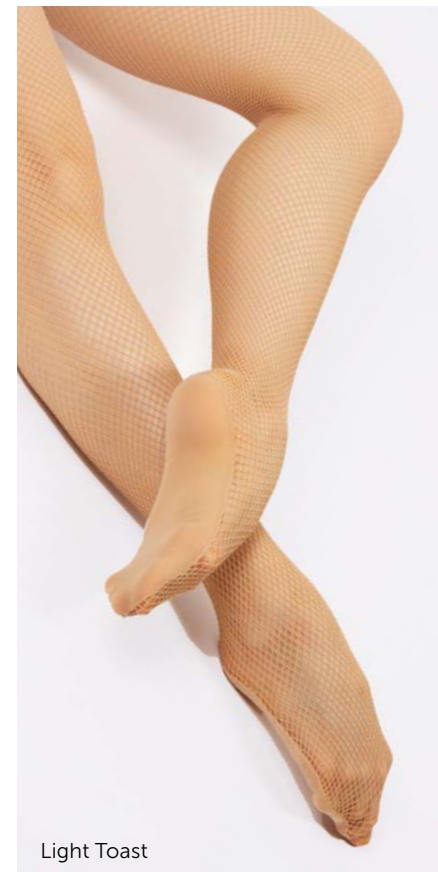
PROFESSIONAL FISHNETS FULL FOOT

Full foot professional fishnet tights. Foot bed is soft and comfortable. The knit is long lasting and strong.

Made in Italy



Light Toast



Light Toast

0065N

Size: XS/S, M/L, L/XL
82% microfiber, 18% elastane.
● Light Toast ● Black ● Brown

CONVERTIBLE MICROFIBER TIGHTS

Microfiber convertible tights. Comfortable generous opening under the arch. Microfiber Knit-in waistband.



Theatrical Pink



Theatrical Pink

0052N

Youth size: 000, 00, 0
Adult size: S, M, L, XL
90% polyamide (microfiber), 10% lycra.
● Theatrical Pink

BALLET SOCKS

These socks are perfect for all ballet classes and examinations.



Ballet Pink



Ballet Pink

0053N

One size
85% polyamide, 15% elastane, 60DEN
○ White ● Black
● Ballet Pink ● Tan



SKIRTS. ALL COLLEC- TIONS

NIKOLAY® skirts are a breath of wind that flows around a dancer's silhouette giving her movements even more grace.

We make them in a huge variety of colors from the more tender ice-blue and lilac to sophisticated coffee and olive.

Microfiber or mesh, pull-on or wrap — whatever style you choose, NIKOLAY® skirts give you a perfect and elegant look.



Tai

Mesh skirt

The classic wrap skirt, with its graceful stretch ties, is the perfect finishing touch to any ballet ensemble. Crafted from our durable yet delicately flowing stretch mesh, this skirt drapes elegantly, offering just the right amount of coverage with 16 inches in the back and 13 inches at the center front. The versatile length and timeless design enhance the movement and silhouette of any leotard, making this skirt an essential accessory for dancers who want to elevate their look with ease and style.

06017/1N Tai

XS – 30 cm
S – 32 cm
M – 40 cm
L – 48 cm
XL – 55 cm

Material: 93% polyamide, 7% elastane

- Tiffany
- Malachite
- Mother of Pearl
- Poppy
- Dark Blue
- Black
- Tea Rosa
- Lilac



Mother of Pearl

Tea Rosa

Talia

Skirt

Slip into sophistication with this sleek pull-on skirt, measuring 11 inches at the front and 13 inches at the back. Crafted from luxurious Italian microfiber, it offers a smooth, elegant feel that moves beautifully with you. The 1.5-inch waistband provides a secure fit, while side slits extend halfway up for an enchanting drape and an unmatched twirl factor. This stylish and modern design is the perfect finishing touch to any dancewear collection, enhancing your movement with grace and flair.

Youth sizes

DAD5004MN Little Talia

Sizing by age	10–11 Y	12–13 Y
Size RU	36	38

Adult sizes

DA5004MN Talia

International size	XXS	XS	S	M	L	XL
Size RU	40	42	44	46	48	50

Material: 80% polyamide micro, 20% elastane

- Tiffany
- Malachite
- Mother of Pearl
- Poppy
- Dark Blue
- Black
- Tea Rosa
- Lilac



Black

Poppy

Tabitha

Mesh skirt

Our updated mock wrap pull-on skirt is the perfect blend of elegance and comfort. The 1.5-inch fabric waistband sits gracefully atop an A-line cut that flows beautifully as you move. Crafted from stretch mesh, this skirt drapes effortlessly to create a flattering silhouette, with 11 inches at the center front and 14 inches at the back for full coverage. It's a stunning complement to any dance attire, offering a touch of sophistication and effortless style that enhances every performance.

Youth sizes

DAD1945N Little Tabitha

Sizing by age	10–11 Y	12–13 Y
Size RU	36	38

Adult sizes

DA1945N Tabitha

International size	XXS	XS	S	M	L	XL
Size RU	40	42	44	46	48	50

Material: 93% polyamide, 7% elastane

- Tiffany
- Malachite
- Mother of Pearl
- Poppy
- Dark Blue
- Black
- Tea Rosa
- Lilac



Tiffany

Tea Rosa

Practice tutu

5-Layer Tutu skirt

Adult sizes

0455/3N

7-Layer Tutu skirt

Adult sizes

0455N

10-Layer Tutu skirt

Adult sizes

0460N

International size	XXS	XS	S	M	L	XL
Size RU	40	42	44	46	48	50

Material: 100% nylon

4-Layer Tutu skirt

Youth sizes

0455/1N

Sizing by age	5-6Y	6-7Y	8-9Y	9-10Y	10-11Y	12-13Y
Size RU	28	30	32	34	36	38

Material: 100% nylon

The full color chart is on page 81

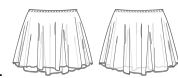


Black

Echo

Mesh skirt

A new take on an old favorite, Italian four-way stretch mesh pull-on skirt. Hemless skirt is made for an easy length adjustment. Longer on back for a classic line.



Youth sizes

DAD2005N Little Echo

Sizing by age	5-6Y	6-7Y	8-9Y	9-10Y	10-11Y	12-13Y
Size RU	28	30	32	34	36	38

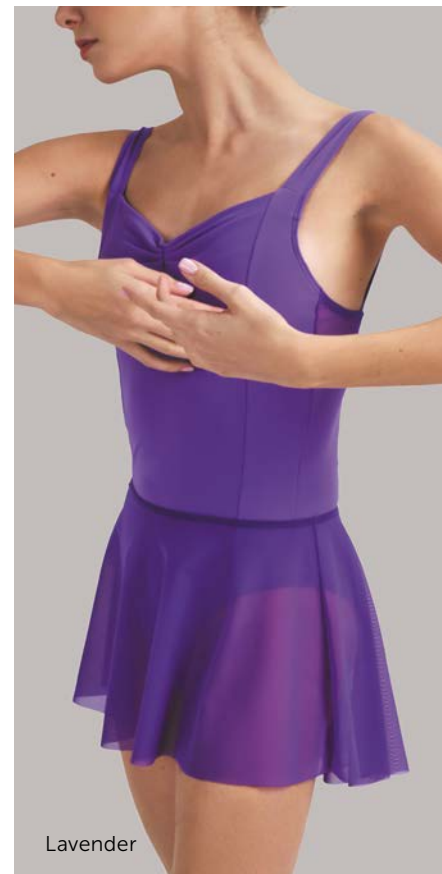
Adult sizes

DA2005N Echo

International size	XXS	XS	S	M	L	XL
Size RU	40	42	44	46	48	50

Material: 93% polyamide, 7% elastane.

- Ice Blue
- Light Blue
- French Blue
- Bordeaux
- Coffee
- Dark Grey
- Light Navy
- Royal Blue
- Lavender
- Olive
- Tiffany
- Lilac
- Pink
- Red
- Black
- White
- Medium Taupe



Celine

Mesh skirt

Short mesh skirt with wide elastic belt to underline the waist – very popular mock wrap design loved by dancers all over.



Youth sizes

DAD1945N Little Celine

Sizing by age	8-9 Y	9-10 Y	10-11 Y	12-13 Y
Size RU	32	34	36	38

Adult sizes

DA1945N Celine

International size	XXS	XS	S	M	L	XL
Size RU	40	42	44	46	48	50

Material: Belt: 80% polyamide micro, 20% elastane., Skirt: 93% polyamide, 7% elastane. Length: 13"

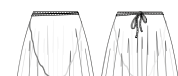
- Pink
- Red
- Lilac
- Ice Blue
- Olive
- Coffee
- Black
- Medium Taupe
- Royal Blue
- White
- Light Navy



Eden

Mesh skirt with ties

A classic wrap skirt with stretch waistband, length can be adjusted on any size due to no hem edging. High quality Italian stretch mesh will not run when cut.



Youth sizes

DAD2006N Little Eden

Sizing by age	5-6Y	6-7Y	8-9Y	9-10Y	10-11Y	12-13Y
Size RU	28	30	32	34	36	38

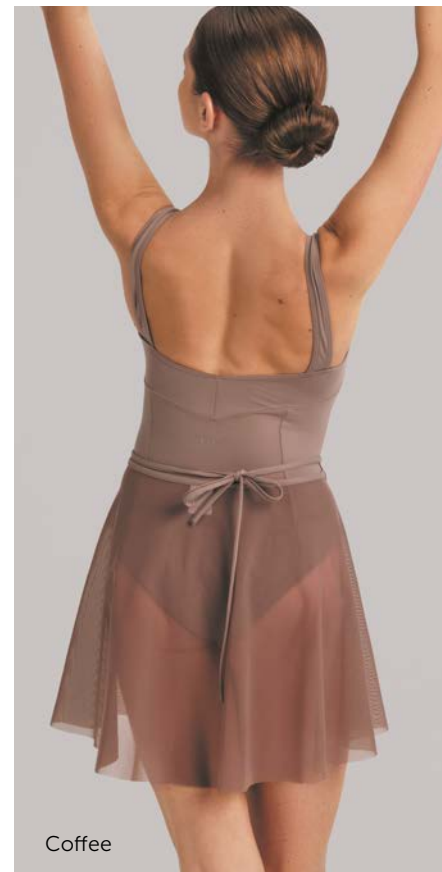
Adult sizes

DA2006N Eden

International size	XXS	XS	S	M	L	XL
Size RU	40	42	44	46	48	50

Material: 93% polyamide, 7% elastane.

- Ice Blue
- Light Blue
- French Blue
- Bordeaux
- Coffee
- Dark Grey
- Light Navy
- Royal Blue
- Lavender
- Olive
- Tiffany
- Lilac
- Pink
- Red
- Black
- White
- Medium Taupe



Calyssa

Folk and character skirt

Long two-layer skirt of mesh with tulle underneath was made by order of Vaganova Academy for character and folk dance. Wide elastic belt can be fixed on waist or hips and airy mesh allows the dancer to feel free during any movements.



Youth sizes

DAD1478N Little Calyssa

Sizing by age	8-9 Y	9-10 Y	10-11 Y	12-13 Y
Size RU	32	34	36	38

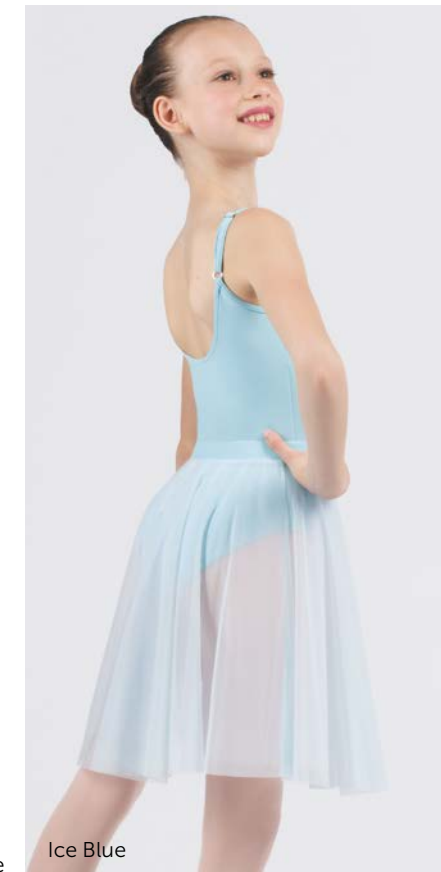
Adult sizes

DA1478N Calyssa

International size	XXS	XS	S	M	L	XL
Size RU	40	42	44	46	48	50

Material: 93% polyamide, 7% elastane. Size: 8-9 Y – 13,8", Size: 9-10 Y – 15,75", Size: 11-13 Y – 17,7", Size: XXS – 19,7", Size: XS-XL – 21,65"

- White
- Pink
- Lilac
- Royal Blue
- Coffee
- Black
- Light Blue
- Ice Blue
- Medium Taupe





MEN'S GARMENTS

In a field dominated by the fairer sex, the male market is often overlooked.

We intend to set the record straight — and give our retailers a unique opportunity to capture this promising niche.

Our collection of men's garments covers all the basic items that male artists need from leggings to bodysuits and underwear.

Strong sweat-wicking qualities give you all-day comfort; highly stretchy fabrics guarantee free range of motion; all garments are designed to hold up to vigorous movement and frequent use thanks to durable fabrics, strong threads and stitches.

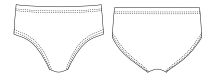
As more boys join the art of ballet, don't miss out on the trend with the NIKOLAY® men's collection.



Little Carson

Trunks

Boy's trunk. Made in the greatest tradition of Russian ballet uniform for boys.



DAD1495CN Little Carson

Sizing by age	5-6Y	6-7Y	8-9Y	9-10Y	10-11Y	12-13Y
Size RU	28	30	32	34	36	38

Material:
90% cotton, 10% elastane.

- Black

DAD1495MN Little Carson

Sizing by age	5-6Y	6-7Y	8-9Y	9-10Y	10-11Y	12-13Y
Size RU	28	30	32	34	36	38

Material:
80% polyamide micro, 20% elastane.

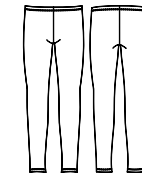
- Black
- Dark Grey



Caleb

Leggings

Boy's and Men's footless tights. Comfortable microfiber, featuring high waist and secure waist elastic.



Youth sizes

DAD1497MN Little Caleb

Sizing by age	10-11Y	12-13Y
Size RU	36	38

Adult sizes

DA1497MN Caleb

International size	XXS	XS	S	M	L	XL	2XL
Size RU	40	42	44	46	48	50	52

Material:
80% polyamide micro, 20% elastane.

- Black
- Dark Grey
- Dark Blue



Little Caden

Bodysuit

Boy's bodysuit, tank top and trunk attached. Made of stretch cotton comfortable and universal for uniforming.



DAD109CN Little Caden

Sizing by age	5-6Y	6-7Y	8-9Y	9-10Y	10-11Y	12-13Y
Size RU	28	30	32	34	36	38

Material:
90% cotton, 10% elastane.

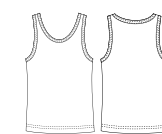
- White/Black



Little Chase

Tank top

Boy's tank top. Made in the greatest tradition of Russian ballet uniform for boys.

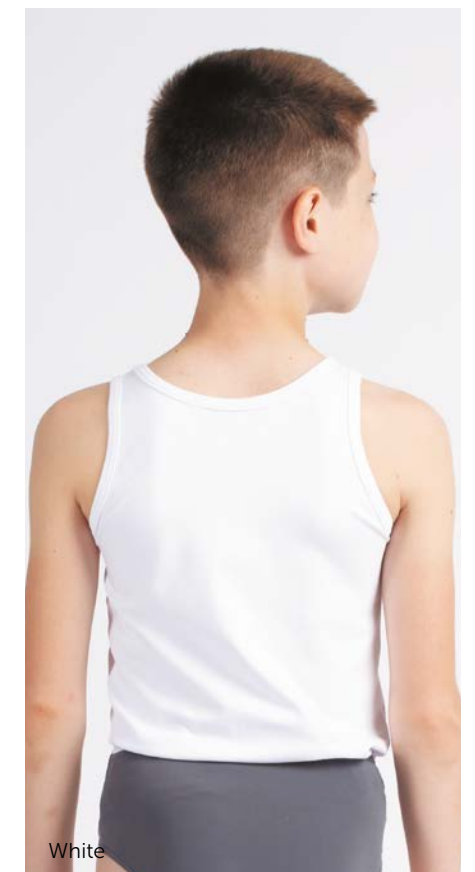


DAD1494CN Little Chase

Sizing by age	5-6Y	6-7Y	8-9Y	9-10Y	10-11Y	12-13Y
Size RU	28	30	32	34	36	38

Material:
90% cotton, 10% elastane.

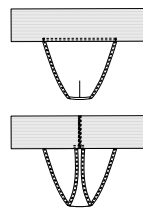
- White



Evan

Men's dance belt

Men's dancebelt at its best. Sufficient padding, comfortable elastic and perfect shape.



Pale Beige



Pale Beige

DA2007CN Evan

International size	XXS	XS	S	M	L	XL	2XL
Size RU	40	42	44	46	48	50	52

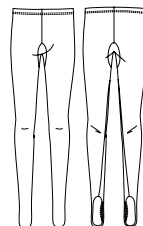
Material:
90% cotton, 10% elastane.

● Pale Beige

Eric

Leggings

Men's convertible microfiber tights. A unique pattern follows the dancers body perfectly. Convertible foot opening is comfortable and easy to wear.



White



Black

DA2008MN Eric

International size	XXS	XS	S	M	L	XL	2XL
Size RU	40	42	44	46	48	50	52

Material:
80% polyamide micro, 20% elastane.

● Dark Grey
● Black
○ White

Cadin

Bodysuit

Front bottom lined men's short sleeve crew neck bodysuit. Featuring comfortable flat snaps under crotch for easy change.



Youth sizes

DA1480CN Little Cadin

Sizing by age EU	10-11Y	12-13Y
Size RU	36	38

Adult sizes

DA1480CN Cadin

International size	XXS	XS	S	M	L	XL	2XL
Size RU	40	42	44	46	48	50	52

Material:
90% cotton, 10% elastane.

○ White



Cooper

Men's Dance Belt

Men's supportive dance belt. Seamless under tights. Comfortable and soft.



DA1496CN Cooper

International size	XXS	XS	S	M	L	XL	2XL
Size RU	40	42	44	46	48	50	52

Material:
90% cotton, 10% elastane.

● Pale Beige

Boy's briefs

Boy's briefs, full seat dance belt. Made in tradition of classic uniform style.



DA05CN

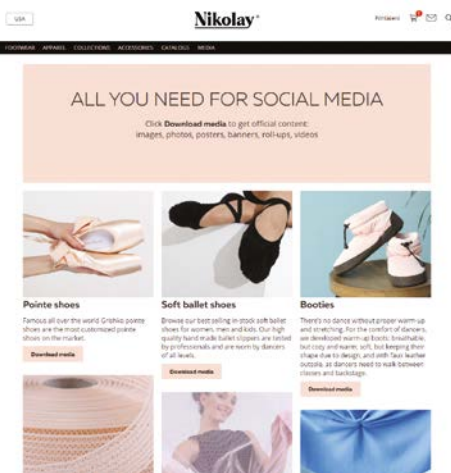
Sizing by age	5-6Y	6-7Y	8-9Y	9-10Y	10-11Y	12-13Y
Size RU	28	30	32	34	36	38

Material:
90% cotton, 10% elastane.

● Black

HOW WE HELP RETAILERS BOOST SALES

When our retailers prosper, we prosper, too. That is why we have a wide range of marketing tools to help you sell our products.



MEDIA MATERIALS AND DESIGN

We provide retailers with high-resolution photos of our products that you can use in store or online. We can also create designs for your stand, brochures and other promotional materials that feature our products on request.

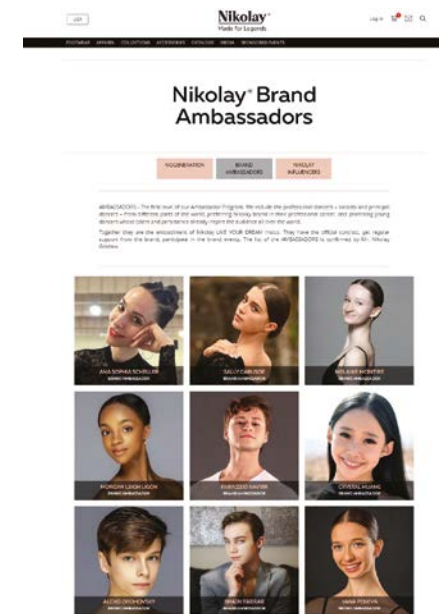
Contact your international brand manager or your sales representative to discuss if you need any promo materials.



PARTNER SCHOOLS

We are a retailer-centric company, therefore we created a program uniting ballet schools, retailers, and an amazing quality.

For consideration into the Partner School Program, please contact Riley Thomas Weber weber@nikolay-world.com



AMBASSADORS

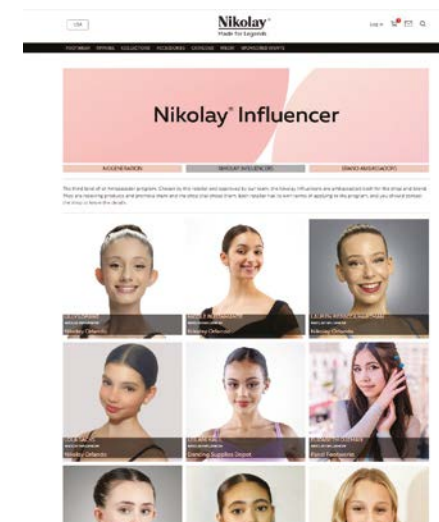
To better promote NIKOLAY® products, you can rely on the strong brand image we built both on social media and in the professional world of ballet with the help of our ambassadors.



NIKOLAY® Brand Ambassadors

are the first level of our Ambassador Program. We engage professional ballet artists – soloists and principal dancers – as well as promising young talents who inspire hundreds of thousands of ballet lovers all over the world.

Our Brand Ambassadors are true icons of dance, winners of most prestigious ballet contests who have both impeccable ballet technique and strong media presence. Together, they promote the NIKOLAY® brand and embody our motto – LIVE YOUR DREAM. They have an official contract, get regular support from the brand, and participate in the brand events.



NIKOLAY® Market Influencers are the second level of our Ambassador program designed specifically to boost online presence of NIKOLAY® partners retailers. Each store can choose their own influencer to promote them – and we will provide them with quarterly gifts.

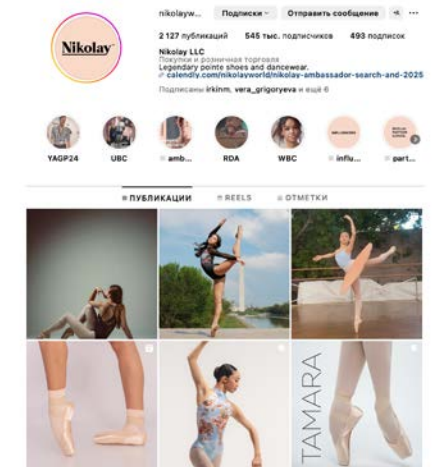
NIKOLAY® Influencers create engaging content for your store, and we regularly feature both your influencer and your store on our social media accounts – so you can reach an audience of more than 180 000 loyal NIKOLAY® customers. Each retailer has its own terms of applying to the program.



NIKOLAY RETAILER COMMUNITY



Join private NIKOLAY® Retailer Community. Special secret sales announcements will be made exclusively on the community page. Download ready Instagram and website content. Access information that is made exclusively for NIKOLAY® Retailers. Communicate with other retailers to find the best solution of NIKOLAY® brand promotion, tips and tricks of NIKOLAY® fittings and more.



@nikolayworld



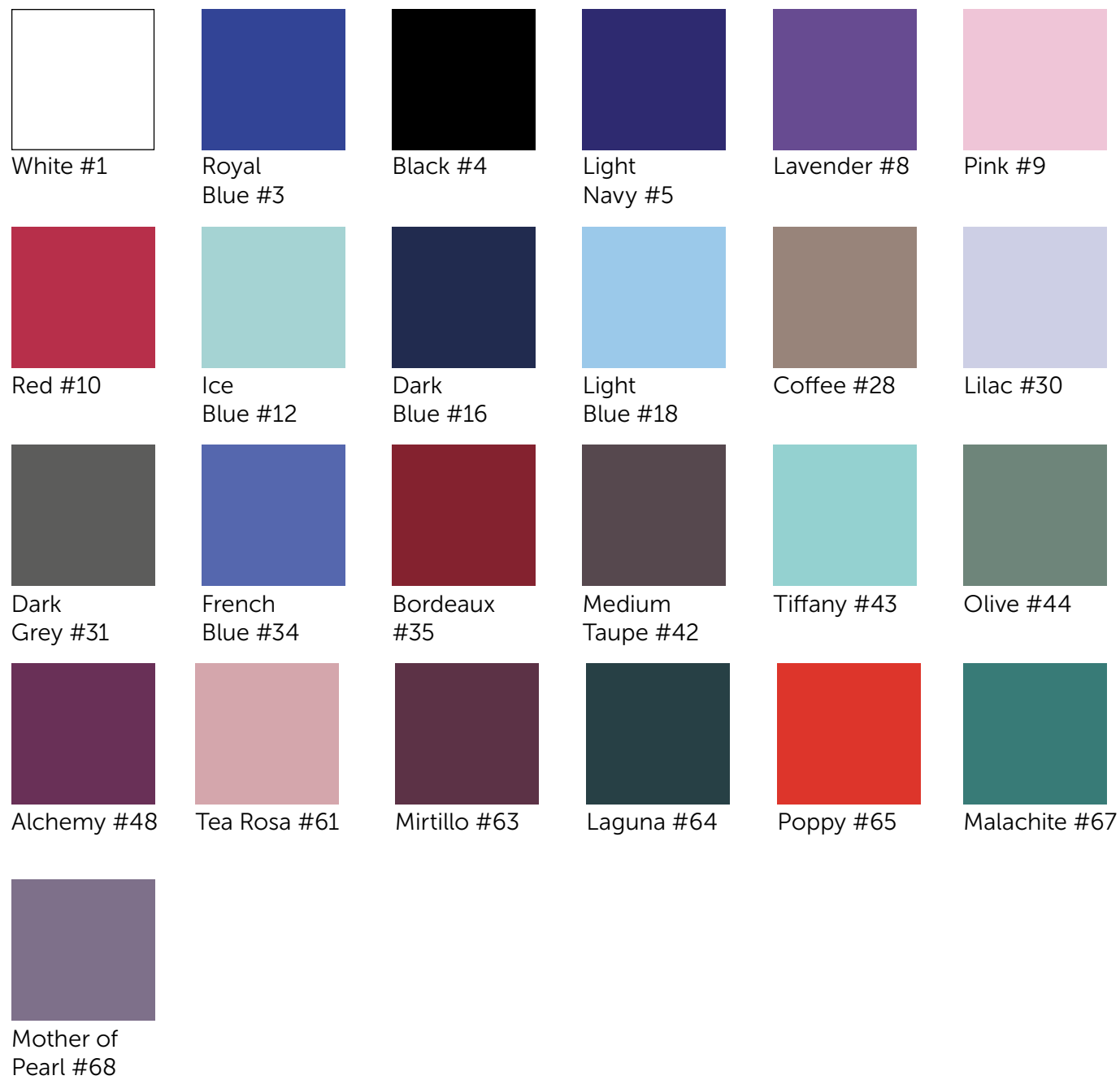
@nikolayworld is great opportunity to feature your store and share all the news regarding new arrivals and in-store events announcements.

COLORS OF FABRICS

POLYAMIDE MICRO

80% polyamide micro, 20% elastane

LEOTARDS / SKIRTS / LEGGINGS / TRUNKS



POLYESTER

HEAT RETENTION WEAR

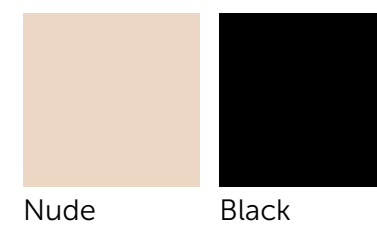
100% polyester



MICROFIBER

UNDERGARMENTS

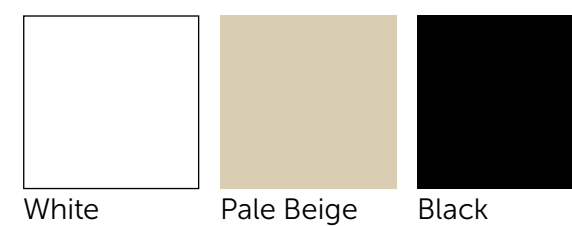
86% polyamide, 14% elastane



COTTON

TRUNKS / BODYSUITS / TANK TOPS / BRIEFS / DANCE BELTS

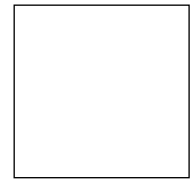
90% cotton, 10% elastane



CLASSIC EXCELLENCE

POLYAMIDE MICRO

80% polyamide micro, 20% elastane



White #1



Royal Blue #3



Black #4



Light Navy #5



Lavender #8



Pink #9



Red #10



Ice Blue #12



Light Blue #18



Coffee #28



Lilac #30



Dark Grey #31



French Blue #34



Bordeaux #35



Medium Taupe #42



Tiffany #43



Olive #44



Lips #55



Pony #56

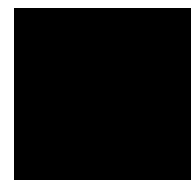
NIKOLAY® ACADEMY

POLYAMIDE MICRO

80% polyamide micro, 20% elastane



White #1



Black #4



Pink #9



Red #10



Ice Blue #12



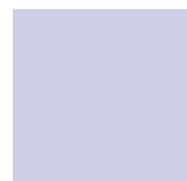
Dark Blue #16



Light Blue #18



Coffee #28

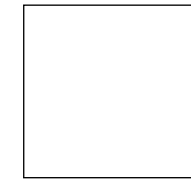


Lilac #30

BASIC LEOTARDS

POLYAMIDE MICRO

80% polyamide micro, 20% elastane



White #1



Royal Blue #3



Black #4



Lavender #8



Pink #9



Red #10



Light Blue #18



Lilac #30

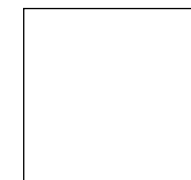


Bordeaux #35

MEN'S BASIC

POLYAMIDE MICRO

80% polyamide micro, 20% elastane



White #1



Black #4



Light Navy #5



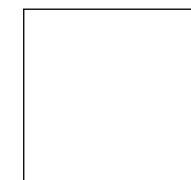
Dark Grey #31



Bordeaux #35

COTTON

90% cotton, 10% elastane



White



Black

NIKOLAY® APPAREL SIZE: CORRESPONDENCE CHART

ADULT SIZES / LADIES							
Height	5'2"	5'4"	5'6"- 5'7"	5'6"- 5'7"	5'6"- 5'7"	5'6"- 5'7"	5'6"- 5'7"
Bust Circumference, in	30,3- 31,5	31,9- 33,1	33,5- 34,7	35,0- 36,2	36,6- 37,8	38,2- 39,4	41,3- 42,5
Waist Circumference, in	24,0- 24,4	24,8- 25,2	25,6- 26,8	27,2- 28,3	28,3- 29,5	29,2- 31,5	32,3- 33,5
Hip Circumference, in	33,9- 34,6	35,4- 36,2	36,6- 37,8	38,1- 39,4	39,8- 40,9	41,3- 42,5	44,5- 45,7
International size	XXS	XS	S	M	L	XL	2XL
Size RU	40	42	44	46	48	50	52
Size USA	0-2	2-4	4-6	6-8	8-10	10-12	12-14

ADULT SIZES / MEN								
Height	5'4"- 5'7"	5'4"- 5'7"	5'7"- 5'9"	5'7"- 5'9"	5'9"- 6'0"	5'9"- 6'0"	6'0"- 6'1"	6'0"- 6'1"
Chest Circumference, in	30,3- 31,5	31,9- 33,0	33,5- 34,6	35,0- 36,2	36,6- 37,8	38,2- 39,4	39,8- 40,9	41,3- 42,5
Waist Circumference, in	24,0- 24,4	24,8- 25,2	25,6- 26,8	27,2- 28,3	28,3- 29,5	31,1- 32,3	32,7- 33,8	34,2- 35,0
Hip Circumference, in	33,8- 34,6	35,4- 36,2	36,6- 37,8	38,2- 39,4	39,8- 40,9	38,6- 39,4	39,8- 40,5	40,9- 41,7
International size	XXS	XS	S	M	L	XL	2XL	X2XL
Size RU	40	42	44	46	48	50	52	54

YOUTH SIZES / GIRLS							
Height	3'7"	3'9"- 4'0"	4'2"	4'5"	4'7"	4'9"	5'0"
Bust Circumference, in	20,5- 21,6	22	22,4- 23,6	24,0- 25,2	25,6- 26,8	27,2- 28,3	28,7- 29,9
Waist Circumference, in	19,3- 20,0	20,5	20,9- 21,5	21,6- 22,4	22,8- 23,2	23,6	24
Hip Circumference, in	23,2	24,8	25,2- 26,8	27,2- 28,3	28,7- 30,3	30,7- 31,9	32,3- 33,5
Sizing by age	4-5 Y	5-6 Y	6-7 Y	8-9 Y	9-10 Y	10-11 Y	12-13 Y
Size RU	26	28	30	32	34	36	38

YOUTH SIZES / BOYS						
Height	3'9"-4'0"	4'2"	4'5"	4'7"	4'9"	5'0"
Chest Circumference, in	22	22,4- 23,6	24,0- 25,2	25,6- 26,8	27,2- 28,3	28,7- 29,9
Waist Circumference, in	20	20,9- 21,2	21,6- 22,4	22,8- 23,6	24,0- 24,8	25,2- 25,6
Hip Circumference, in	24	24,4- 25,6	26,0- 27,2	27,6- 28,7	29,1- 30,3	30,7- 32,3
Sizing by age	5-6 Y	6-7 Y	8-9 Y	9-10 Y	10-11 Y	12-13 Y
Size RU	28	30	32	34	36	38

NIKOLAY® BASIC LEOTARDS (DP/DPD) SIZE CHART

ADULT SIZES / LADIES					
Height	5'4"	5'6"-5'7"	5'6"-5'7"	5'6"-5'7"	5'6"-5'7"
Bust Circumference, in	31,9-33,1	33,5-34,7	35,0-36,2	36,6-37,8	38,2-39,4
Waist Circumference, in	24,8-25,2	25,6-26,8	27,2-28,3	28,3-29,5	29,2-31,5
Hip Circumference, in	35,4-36,2	36,6-37,8	38,1-39,4	39,8-40,9	41,3-42,5
International size	XS	S	M	L	XL
Size RU	42	44	46	48	50
Size USA	2-4	4-6	6-8	8-10	10-12

YOUTH SIZES / GIRLS					
Height	3'4"-3'7"	3'8"-4'1"	4'1"-4'4"	4'6"	4'8"-5'
Bust Circumference, in	20,5-21,6	22,0-23,6	24,0-25,5	25,9-28,3	28,7-30,3
Waist Circumference, in	20,0-20,4	20,8-21,2	21,6-22,8	23,2-23,6	24,0
Hip Circumference, in	23,6-24,4	24,8-26,7	27,1-28,7	29,1-31,8	32,2-33,8
Sizing by age	2-4 Y	4-6 Y	6-8 Y	8-10 Y	12-14 Y
Size RU	26	30	32	34	38

WE WOULD LIKE TO THANK THE DANCERS:

FABRIZIO XAVIER ULLOA CORNEJO

@fabrizioou
NIKOLAY Ambassador
Prix de Lausanne Gold Medal
YAGP Grand Prix Award
Royal Ballet School, London

YANA PENEVA

@yana_peneva
NIKOLAY Ambassador
Stuttgart Ballet
First Place - Tampa YAGP
Shelley King Award
John Cranko Schule

ALEXEI OROHOVSKY

@ballet_alexei
NIKOLAY Ambassador
Gold Medal USA IBC Jackson 2023
2nd place, Helsinki International Ballet Competition 2023
John Cranko Schule

MATEO DAUKAUS

@mateodaukaus
NIKOLAY Ambassador
Ballet West Academy
The Sarasota Cuban Ballet School, Sarasota FL

BRADY FARRAR

@bradyfarrar
NIKOLAY Ambassador
YAGP Grand Prix 2021
Gold medal South African International Ballet Competition
American Ballet Theatre

MORGAN LEIGH LIGON

@littlesmorganleigh
NIKOLAY Ambassador
Hope Award YAGP
American Ballet Theatre JKO School, NYC
Académie Princesse Grace

LILLY LOPANE

@lillianthedancer
NIKOLAY Influencer
Singur Ballet, NYC

CRYSTAL HUANG

@crystalhuangdance
NIKOLAY Ambassador
Prix de Lausanne Finalist
American Ballet Theatre JKO School, NYC

ISABELLA SACKS

@bella_sacks
NIKOLAY Influencer
Orlando Ballet School
Natalia BashCatova Coach

ELIZABETH-GRAY RIVERS

@elizabeth_gray_rivers
NIKOLAY Influencer
Carolina Ballet School

PARIS SVIGOS

@svigosparis
NIKOLAY Ambassador
Illinois Classical Ballet

BETTY PAN

@_bettypan_
YAGP Finalist
John Cranko Schule

ECatARINA PICHKOVA

@pichkova.Catya
YAGP Finalist
Osipova Ballet Academy

SALLY CARUSO

@sally_caruso_dance
NIKOLAY Ambassador
YAGP Finalist

ATHENA HU

@athenahudance
YAGP Finalist
Bayer Ballet Academy

AFINA GOSLA

@afina_gosla
YAGP Finalist
Southland Ballet Academy

COCO STRABO

@corinne_strabo
YAGP Finalist
Hasmik Amirian Ballet

LOLA SACKS

@lola_dancer
YAGP Hope award
Académie Princesse Grace
Natalia BashCatova Coach

AMIR DODARKHOJAYEV

@amirkoreavs
YAGP Finalist
Orlando Ballet, Orlando FL

HITOMI NAKAMURA

@hitominachan
First Place Tokyo Ballet Competition
YAGP Finalist
Orlando Ballet, Orlando FL

MACKENZIE and SKYLAR CHU ROBIN

@the.ballet.twins
YAGP Finalists
Hasmik Amirian Ballet

2025 PHOTOGRAPHY BY

KEN OSADON

@kodancephotography www.kenosadon.com
NICETT FERRO-RODRIGUEZ

CHRIS MOORE

@staractionshots
www.staractionshots.com

DARIAN VOLKOVA

@darianvolkova
www.darianvolkova.ru

NIKOLAY® LLC
7003 Presidents Dr
Suite 600
Orlando, FL 32809 USA
Ph. 800.987.6715



nikolay-world.com



[nikolayworld](https://www.instagram.com/nikolayworld)