

Grishko®



2022  
GARMENTS

# CONCENTRATE ON THE MAIN THING

WE VIGOROUSLY CONTROL  
OUR PRODUCTION TO MAKE  
YOUR GARMENT FEEL LIKE  
SECOND SKIN – BECAUSE WHEN  
YOU FEEL COMFORTABLE,  
YOU CAN CONCENTRATE  
ON THE MAIN THING – DANCE



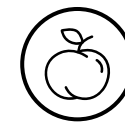
## THE BEST ITALIAN POLYAMIDE MICRO ONLY

The supplier of the fabrics we use has a certificate, approving its quality.  
**STANDARD 100** by **OEKO-TEX®** is one of the world's best-known labels for textiles tested for harmful substances. It stands for customer confidence and high product safety.  
If a textile article carries the **STANDARD 100** label, you can be certain that every thread has been tested for harmful substances and that the article, therefore, is harmless for human health.

## MATERIAL FEATURES OF GRISHKO® LEOTARDS



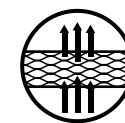
We source the best existing high-tech and soft materials available for sportswear that guarantee comfort during any movements.



Super soft like a peach brushed microfiber makes our garments feel like second skin.



UPF 50+ allows one to wear the garment during outdoor classes without worry.



Polyamide micro – hi-tech breathable material.



Special bi-stretch technology helps you to feel free during stretching and active exercises.



Easily absorbs moisture and looks good even when it's a bit damp.



Keeps its form and doesn't lose shape after multiple washings.



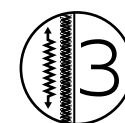
Fast-drying and breathable, thus extremely comfortable.



Fade resistant. Colors remain bright after a high number of washes.



## CAREFUL PRODUCTION FOR YOUR CONFIDENCE



We use three different types of thread to answer stretching properties of the materials.



We pay attention to the end of each seam by securing it. This guarantees longer lifespan for your garment.



# LASTING BEAUTY

STRONG AND SOFT AS A CLOUD —  
OUR HIGH-TECH FABRICS ARE GENTLE  
TO YOUR SKIN BUT WITHSTAND HOURS  
OF INTENSE TRAINING

## POCKETS FOR CUPS

Some ballerinas prefer using cups, while others — don't. We made pockets, so there's always the possibility of changing cups, adding them, or removing them when needed.

Please, note: we do not sell bra cups so you will need to buy them separately.



## LINING

All our leotards are fully front lined to give dancers confidence that nothing is visible from under the garment.



White lining for white leotards.



Beige lining for color leotards.



Black lining for black leotards.





# BOLSHOI STARS. MAGNIFIQUE

Bolshoi Stars is the crown jewel of GRISHKO® dancewear collections. In this 2022 edition, we set out to discover a Roman goddess within every dancer. Roman goddesses were grace and beauty incarnate but modern-day ballerinas outshine them by far.

The way they defy gravity flying high above stage, the way they go through endless training to attain perfection — indeed, ballet dancers seem like deities walking amongst the mortals. This collection is a reverence to the divine, god-like beauty of ballet.

Be your own goddess with magnificent leotards coming in all styles and colors. Go for lilac and floral designs if you are more of a spring deity — bringing dreamy touch to every movement.

And should you feel like a goddess of night — then we have designs just for you. Flocked mesh sleeves and deep, sophisticated colors from midnight sky to black — for a night flower that blooms the brightest in the dark.

**GRISHKO®.**  
**BE YOUR OWN GODDESS**







**Odette**  
Camisole leotard  
Black/White

# Odette

Camisole leotard

Camisole leotard with velvet trim.  
Adjustable straps and princess seam detail.  
V-front neckline with mid-V-back.  
Floral flocked mesh bust overlay ends  
at empire waist.



Youth sizes

**DAD2085MP Little Odette**

Sizing by age	9-10 Y	10-11 Y	12-13 Y
Size RU	34	36	38

Adult sizes

**DA2085MP Odette**

International size	XXS	XS	S	M	L	XL
Size RU	40	42	44	46	48	50

Material:  
80% polyamide micro, 20% elastane.

**Sizes 34 (9-10 Y): fully front lined.**  
**Sizes 36 (10-11 Y) — 50 (XL): fully front lined, pockets for cups.**

Color:

●● Black/Black

●○ Black/White



Black/Black



Black/Black



Black/White



Black/White



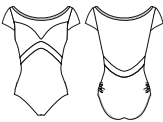


Odessa  
Cap sleeve leotard  
Black/White

# Odessa

Cap sleeve leotard

Sweetheart neckline with floral flocked mesh overlay on a boatneck design with mesh cap sleeves. Velvet trim accent under the bust extends to create a dramatic back with full mesh coverage. A unique feature of an adjustable hipline is added for that special look.



Adult sizes

**DA2086MP Odessa**

International size	XXS	XS	S	M	L	XL
Size RU	40	42	44	46	48	50

Material:  
80% polyamide micro, 20% elastane.

**Sizes 40 (XXS) — 50 (XL): fully front lined, pockets for cups.**

Color:

●● Black/Black

●○ Black/White



Black/Black



Black/Black



Black/White



Black/White



# Oda

Tank style leotard

Boatneck tank leotard with clasp closure at neck features elongated keyhole opening on the back. Sophisticated floral flocking extends to the natural waistline.



Youth sizes

<b>DAD2087MP Little Oda</b>		
Sizing by age	10–11 Y	12–13 Y
Size RU	36	38

Adult sizes

<b>DA2087MP Oda</b>						
International size	XXS	XS	S	M	L	XL
Size RU	40	42	44	46	48	50

Material:  
80% polyamide micro, 20% elastane.

**Sizes 36 (10–11 Y) — 50 (XL): fully front lined, pockets for cups.**

- Color:
- Black/Black
  - Black/White



Black/Black



Black/Black



Black/White



Black/White

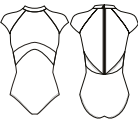
Oda  
Tank style leotard  
Black/Black



# Odile

Cap sleeve leotard

Mock neck leotard with full zipper back closure. Raglan cap sleeve design with velvet collar showcases the gorgeous floral flocked overlay and mesh back.



Youth sizes

**DAD2088MP Little Odile**

Sizing by age	10–11 Y	12–13 Y
Size RU	36	38

Adult sizes

**DA2088MP Odile**

International size	XXS	XS	S	M	L	XL
Size RU	40	42	44	46	48	50

Material:  
80% polyamide micro, 20% elastane.

**Sizes 36 (10–11 Y) — 50 (XL): fully front lined, pockets for cups.**

Color:

●● Black/Black

●○ Black/White



Black/Black



Black/Black



Black/White



Black/White

# Odile

Cap sleeve leotard  
Black/White



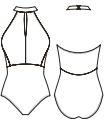


Octavia  
Halter leotard  
Roulette/Pink

# Octavia

Halter leotard

Halter leotard with clasp closure and small keyhole above the bust. Mid open back features flocked mesh design carried over from front mesh overlay.



Youth sizes

**DAD3008MP Little Octavia**

Sizing by age	12–13 Y
Size RU	38

Adult sizes

**DA3008MP Octavia**

International size	XXS	XS	S	M	L	XL
Size RU	40	42	44	46	48	50

Material:  
80% polyamide micro, 20% elastane.

**Sizes 38 (12–13 Y) — 50 (XL): fully front lined, pockets for cups.**

Color:

- Black/Black
- Roulette/Pink
- Midnight Sky
- Ramo



Midnight Sky



Ramo



Roulette/Pink



Black



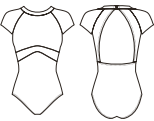


Oceana  
Cap sleeve leotard  
Black/Black

# Oceana

Cap sleeve leotard

Mock neck cap sleeve leotard with clasp closure and open back. Flocked mesh overlay with flattering high waist mesh design detail.



Youth sizes

**DAD3009MP Little Oceana**

Sizing by age	9-10 Y	10-11 Y	12-13 Y
Size RU	34	36	38

Adult sizes

**DA3009MP Oceana**

International size	XXS	XS	S	M	L	XL
Size RU	40	42	44	46	48	50

Material:  
80% polyamide micro, 20% elastane.

**Sizes 34 (9-10 Y): fully front lined.**  
**Sizes 36 (10-11 Y) — 50 (XL): fully front lined, pockets for cups.**

Color:

- Black/Black
- Roulette/Pink
- Midnight Sky
- Ramo



Roulette/Pink



Ramo



Midnight Sky



Black





**Ocala**  
Cap sleeve leotard  
Roulette/Pink

# Ocala

Cap sleeve leotard

Flattering cap sleeve leotard with V-front neckline and bust seam. Unique open V- back and flocked mesh detail.



Youth sizes

<b>DAD3010MP Little Ocala</b>		
Sizing by age	10–11 Y	12–13 Y
Size RU	36	38

Adult sizes

<b>DA3010MP Ocala</b>						
International size	XXS	XS	S	M	L	XL
Size RU	40	42	44	46	48	50

Material:  
80% polyamide micro, 20% elastane.

**Sizes 36 (10–11 Y) — 50 (XL): fully front lined, pockets for cups.**

- Color:
- Black/Black
  - Roulette/Pink
  - Midnight Sky
  - Ramo



Ramo



Ramo



Black/Black



Roulette/Pink





Oclava  
Camisole leotard  
Ramo

# Oclava

Camisole leotard

Stunning adjustable strap camisole leotard has a flattering empire waist line. Unique flocked mesh overlay detail.



Youth sizes

**DAD3007MP Little Oclava**

Sizing by age	10–11 Y	12–13 Y
Size RU	36	38

Adult sizes

**DA3007MP Oclava**

International size	XXS	XS	S	M	L	XL
Size RU	40	42	44	46	48	50

Material:  
80% polyamide micro, 20% elastane.

**Sizes 36 (10–11 Y) — 50 (XL): fully front lined, pockets for cups.**

Color:

- Black/Black
- Roulette/Pink
- Midnight Sky
- Ramo



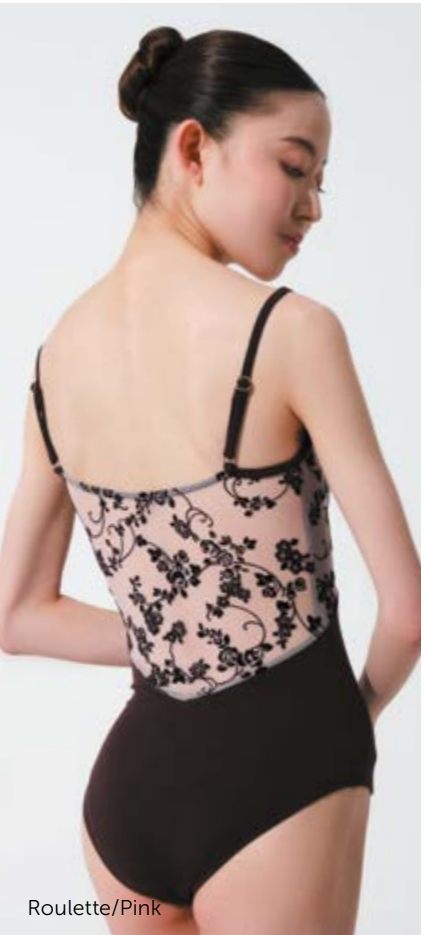
Ramo



Black/Black



Roulette/Pink



Roulette/Pink



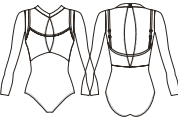


Ocie  
Long sleeve leotard  
Black

# Ocie

Long sleeve leotard

Faux layered look is shown on this camisole leotard under long sleeve overlay. Mock neck with clasp closure and elongated keyhole opening on back is both stylish and modest.



Youth sizes

**DAD3011MP Little Ocie**

Sizing by age	10–11 Y	12–13 Y
Size RU	36	38

Adult sizes

**DA3011MP Ocie**

International size	XXS	XS	S	M	L	XL
Size RU	40	42	44	46	48	50

Material:  
80% polyamide micro, 20% elastane.

**Sizes 36 (10–11 Y) — 50 (XL): fully front lined, pockets for cups.**

- Color:
- Black/Black
  - Roulette/Pink
  - Midnight Sky
  - Ramo



Roulette/Pink



Black/Black



Ramo



Ramo



# Olympia

Camisole leotard

Lovely V-front neckline camisole floral print leotard has solid mesh overlay with gathered center front seam.



Youth sizes

**DAD3000MP Little Olympia**

Sizing by age	10–11 Y	12–13 Y
Size RU	36	38

Adult sizes

**DA3000MP Olympia**

International size	XXS	XS	S	M	L	XL
Size RU	40	42	44	46	48	50

Material:  
80% polyamide micro, 20% elastane.

**Sizes 36 (10–11 Y) — 50 (XL): fully front lined, pockets for cups.**

Color:

- Black/Camellia
- Lilac/Camellia
- Medium Taupe/Camellia



Black/Camellia



Black/Camellia



Lilac/Camellia



Medium Taupe/Camellia

# Olympia

Camisole leotard  
Medium Taupe/Camellia





Olesya  
Tank style leotard  
Medium Taupe/Camellia

Olesya

Tank style leotard

Boatneck style leotard features fabulous floral print. Full mesh back offers coverage with a low V-back design.



Youth sizes  
DAD3001LP Little Olesya



Sizing by age	10–11 Y	12–13 Y
Size RU	36	38

Adult sizes  
DA3001LP Olesya

International size	XXS	XS	S	M	L	XL
Size RU	40	42	44	46	48	50

Material:  
80% polyester, 20% elastane.

Sizes 36 (10–11 Y) — 50 (XL): fully front lined, pockets for cups.

- Color:
-  Lilac/Camellia
  -  Medium Taupe/Camellia



Lilac/Camellia



Lilac/Camellia



Medium Taupe/Camellia



Medium Taupe/Camellia





**Olga**  
Tank style leotard  
Lilac/Camellia

# Olga

Tank style leotard

Sporty sleeveless collared leotard with small opening at collar bone and full zip back for support mesh detail at waist line.



Youth sizes

**DAD3002MP Little Olga**

Sizing by age	10–11 Y	12–13 Y
Size RU	36	38

Adult sizes

**DA3002MP Olga**

International size	XXS	XS	S	M	L	XL
Size RU	40	42	44	46	48	50

Material:  
80% polyamide micro, 20% elastane;  
80% polyester, 20% elastane.

**Sizes 36 (10–11 Y) — 50 (XL): fully front lined, pockets for cups.**

- Color:
- Black/Camellia
  - Lilac/Camellia
  - Medium Taupe/Flower







**Olara**  
Tank style leotard  
Lilac/Camellia

**Oksana**  
Pull-on skirt  
Lilac

**Olara**  
Tank style leotard

Sweetheart neckline flower print leotard has solid mesh overlay and clasp closure. Mesh back with keyhole opening finishes at the natural waistline and low V-back detail.



Youth sizes

**DAD3003MP Little Olara**

Sizing by age	10–11 Y	12–13 Y
Size RU	36	38

Adult sizes

**DA3003MP Olara**

International size	XXS	XS	S	M	L	XL
Size RU	40	42	44	46	48	50

Material:  
80% polyamide micro, 20% elastane.  
80% polyester, 20% elastane.

**Sizes 36 (10–11 Y) — 50 (XL): fully front lined, pockets for cups.**

- Color:
- Black/Camellia
  - Lilac/Camellia
  - Medium Taupe/Camellia



Lilac/Camellia



Lilac/Camellia



Medium Taupe/Camellia



Black/Camellia





Opal  
Camisole leotard  
Black

# Opal

Camisole leotard

A gorgeous high-end camisole leotard with adjustable straps. Featuring hand gathered criss-crossed stretch tulle on front and elegant open mesh back.



Youth sizes

**DAD3015MP Little Opal**

Sizing by age	12–13 Y
Size RU	38

Adult sizes

**DA3015MP Opal**

International size	XXS	XS	S	M	L	XL
Size RU	40	42	44	46	48	50

Material:  
80% polyamide micro, 20% elastane.

**Sizes 38 (12–13 Y) — 50 (XL): front lining on bra cups and trunk only.**

- Color:
- Black
  - Lilac
  - Medium Taupe



Lilac



Medium Taupe



Black



Black





**Ophelia**  
 Cap sleeve leotard  
 Lilac

# Ophelia

Cap sleeve leotard

This high end cap sleeve leotard combines classic lines with fashionable details including hand gathered stretch tulle on the bust. Low cut back with adjustable pinch.



Youth sizes  
**DAD3016MP Little Ophelia**

Sizing by age	12–13 Y
Size RU	38

Adult sizes  
**DA3016MP Ophelia**

International size	XXS	XS	S	M	L	XL
Size RU	40	42	44	46	48	50

Material:  
 80% polyamide micro, 20% elastane.

**Sizes 38 (12–13 Y) — 50 (XL): fully front lined, pockets for cups.**

- Color:
- Black
  - Lilac
  - Medium Taupe



Medium Taupe



Medium Taupe



Black



Lilac





Opera  
Camisole leotard  
Black

# Opera

Camisole leotard

Hand gathered detail on bust on this high end faux halter leotard with adjustable straps. Absolutely stunning with gorgeous lines and inspiring quality.



Youth sizes

<b>DAD3017MP Little Opera</b>	
Sizing by age	12–13 Y
Size RU	38

Adult sizes

<b>DA3017MP Opera</b>						
International size	XXS	XS	S	M	L	XL
Size RU	40	42	44	46	48	50

Material:  
80% polyamide micro, 20% elastane.

**Sizes 38 (12–13 Y) — 50 (XL): fully front lined, pockets for cups.**

- Color:
- Black
  - Lilac
  - Medium Taupe



Medium Taupe



Black



Lilac



Lilac





Orna  
Tank style leotard  
Black

# Orna

Tank style leotard

High neck leotard with clasp closure on back featuring supreme quality lace around the bust. Gorgeous mesh back detail surrounds the keyhole opening.



Youth sizes

<b>DAD2095MP Little Orna</b>	
Sizing by age	12–13 Y
Size RU	38

Adult sizes

<b>DA2095MP Orna</b>	
International size	XXS XS S M L XL
Size RU	40 42 44 46 48 50

Material:  
80% polyamide micro, 20% elastane.

**Sizes 38 (12–13 Y) — 50 (XL): fully front lined, pockets for cups.**

Color:  
● Black



Black



Black



Black





**Orient**  
Camisole leotard  
Black

# Orient

Camisole leotard

Pinch front camisole with adjustable straps. Exquisite velvet trim surrounds the waist. Superior quality lace on the back creates a V-cut with mesh.



Youth sizes

**DAD2094MP Little Orient**

Sizing by age	9-10 Y	10-11 Y	12-13 Y
Size RU	34	36	38

Adult sizes

**DA2094MP Orient**

International size	XXS	XS	S	M	L	XL
Size RU	40	42	44	46	48	50

Material:  
80% polyamide micro, 20% elastane.

**Sizes 34 (9-10 Y): fully front lined.**  
**Sizes 36 (10-11 Y) — 50 (XL): fully front lined, pockets for cups.**

Color:

● Black



Black



Black



Black



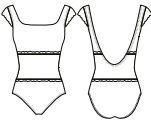


**Orion**  
Tank style leotard  
Black

# Orion

Tank style leotard

Delicate lace extended sleeve leotard with scoop neckline. Lace panel pulls in the waist to accentuate a low scoop back.



Youth sizes

**DAD2092MP Little Orion**

Sizing by age	9-10 Y	10-11 Y	12-13 Y
Size RU	34	36	38

Adult sizes

**DA2092MP Orion**

International size	XXS	XS	S	M	L	XL
Size RU	40	42	44	46	48	50

Material:  
80% polyamide micro, 20% elastane.

**Sizes 34 (9-10 Y): fully front lined.**  
**Sizes 36 (10-11 Y) - 50 (XL): fully front lined, pockets for cups.**

Color:  
● Black



Black



Black



Black





Oretta

Cap sleeve leotard  
Black

Oretta

Cap sleeve leotard

Mesh upper cap sleeve leotard has divine lace panel on the bust. Intricate mesh back design is highly desired by dancers.



Youth sizes

DAD2093MP Little Oretta

Sizing by age	9-10 Y	10-11 Y	12-13 Y
Size RU	34	36	38

Adult sizes

DA2093MP Oretta

International size	XXS	XS	S	M	L	XL
Size RU	40	42	44	46	48	50

Material:  
80% polyamide micro, 20% elastane.

Sizes 34 (9-10 Y): fully front lined.  
Sizes 36 (10-11 Y) - 50 (XL): fully front lined, pockets for cups.

Color:

● Black



Black



Black



Black





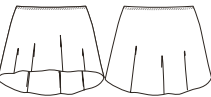
**Olara**  
Tank style leotard  
Lilac/Camellia

**Oksana**  
Pull-on skirt  
Lilac

# Oksana

Pull-on skirt

This classic high-low skirt made out of color matching microfiber has a narrow elastic waistband. Measurements are 23 cm in front and 35,5 cm in back on size XS.



Youth sizes

**DAD3012M Little Oksana**

Sizing by age	10–11 Y	12–13 Y
Size RU	36	38

Adult sizes

**DA3012M Oksana**

International size	XXS	XS	S	M	L	XL
Size RU	40	42	44	46	48	50

Material:  
80% polyamide micro, 20% elastane.

Color:

- Black
- Roulette
- Midnight Sky
- Ramo
- Medium Taupe
- Coffee
- Lilac
- Alchemy
- Olive



Roulette



Ramo



Midnight Sky



Medium Taupe



Orka  
Mesh skirt  
Lilac



Orka

Mesh skirt

This lovely pull-on skirt is higher on the sides and longer in the front and back. Four way stretch mesh. Measurements are 28 cm on sides, 35,5 cm in front and 41 cm in back on size XS.



Youth sizes

DAD3013 Little Orka

Sizing by age	10–11 Y	12–13 Y
Size RU	36	38

Adult sizes

DA3013 Orka

International size	XXS	XS	S	M	L	XL
Size RU	40	42	44	46	48	50

Material:  
93% polyamide micro, 7% elastane.

Color:

- Black
- Lilac
- Medium Taupe



Lilac

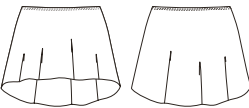


Black

Olema

Pull-on skirt

Classic pull-on skirt in matching fashion flower print. Measurements are 25,5 cm in front and 35,5 cm in back on size XS.



Youth sizes

DAD3012/1L Little Olema

Sizing by age	10–11 Y	12–13 Y
Size RU	36	38

Adult sizes

DA3012/1L Olema

International size	XXS	XS	S	M	L	XL
Size RU	40	42	44	46	48	50

Material:  
80% polyester, 20% elastane.

Color:

- Camellia



Camellia



Camellia





# BOLSHOI STARS. MONARCH

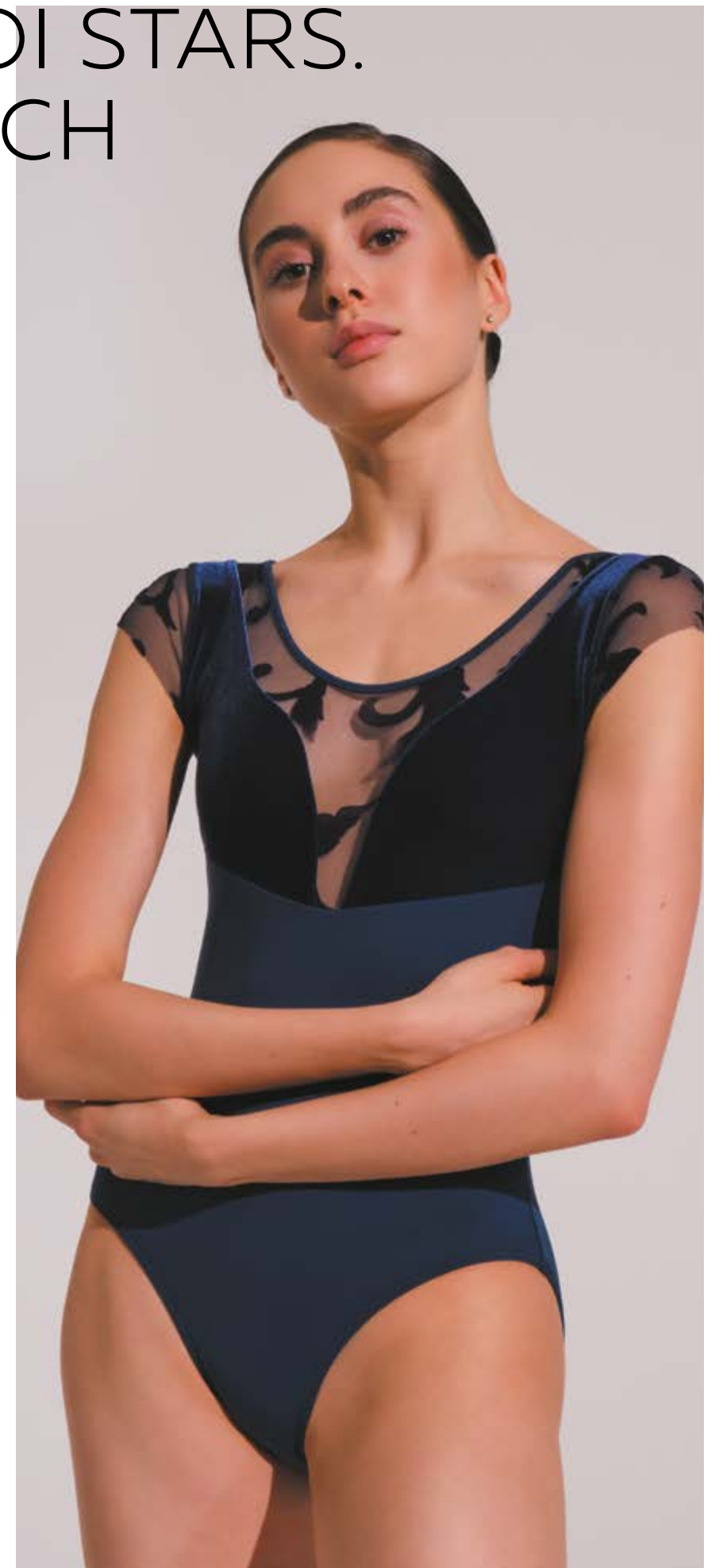
Just like a butterfly spreading its wings for the first time, this collection is the representation of creativity and resilience. Our design team took inspiration from jewel tones of nobility as well as romantic colors of spring.

Hand crafted using the latest Italian materials, this collection will provide you with options unsurpassed.

Featuring a wide range of styles and details of superior quality, Monarch represents renewal and rejuvenation of dance fashion.

All leotards are fully front lined and feature removable bra cup pockets in the lining.

**BOLSHOI STARS. MONARCH —  
THE METAMORPHOSIS  
OF DANCE CONTINUES.**





# Giada

Tank style leotard

Bateau neck tank leotard with flattering princess seams and Italian silky ve-lour detail. Classic lines with a modern twist.



Youth sizes

<b>DAD2025MP Little Giada</b>		
Sizing by age EU	10–11 Y	12–13 Y
Size RU	36	38

Adult sizes

<b>DA2025MP Giada</b>						
International size	XXS	XS	S	M	L	XL
Size RU	40	42	44	46	48	50

Material:  
80% polyamide micro, 20% elastane.

**Sizes 36 (10–11 Y) — 50 (XL): fully front lined.**

- Color:
- Alchemy
  - Midnight Sky
  - Black



Alchemy

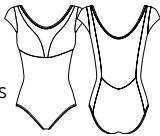


Alchemy

# Grace

Cap sleeve leotard

A beautiful mesh cap sleeve leotard with illusion neckline and low back. Deep bust line accentuates the neckline. Raw sleeves are comfortable and adjustable.



Youth sizes

<b>DAD2026MP Little Grace</b>		
Sizing by age EU	10–11 Y	12–13 Y
Size RU	36	38

Adult sizes

<b>DA2026MP Grace</b>						
International size	XXS	XS	S	M	L	XL
Size RU	40	42	44	46	48	50

Material:  
80% polyamide micro, 20% elastane.

**Sizes 36 (10–11 Y) — 50 (XL): fully front lined, pockets for cups.**

- Color:
- Alchemy
  - Midnight Sky
  - Black



Midnight Sky

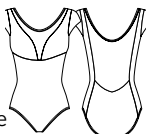


Midnight Sky

# Gillian

Cap sleeve leotard

Mesh cap sleeve leotard with classic illusion bust detail and plunge neckline. Low back with mesh. Italian flocked mesh is comfortable and fashionable.



Youth sizes

<b>DAD2026/1MP Little Gillian</b>		
Sizing by age EU	10–11 Y	12–13 Y
Size RU	36	38

Adult sizes

<b>DA2026/1MP Gillian</b>						
International size	XXS	XS	S	M	L	XL
Size RU	40	42	44	46	48	50

Material:  
80% polyamide micro, 20% elastane.

**Sizes 36 (10–11 Y) — 50 (XL): fully front lined, pockets for cups.**

- Color:
- Alchemy
  - Midnight Sky
  - Black



Midnight Sky



Midnight Sky

# Julie

Tank style leotard

Straight bust line tank style leotard with flocked mesh butterfly print. Mid V back. A classic piece with just the right amount of fashion details.



Youth sizes

<b>DAD2038MP Little Julie</b>		
Sizing by age EU	10–11 Y	12–13 Y
Size RU	36	38

Adult sizes

<b>DA2038MP Julie</b>						
International size	XXS	XS	S	M	L	XL
Size RU	40	42	44	46	48	50

Material:  
80% polyamide micro, 20% elastane.

**Sizes 36 (10–11 Y) — 50 (XL): fully front lined, pockets for cups.**

- Color:
- Black



Black



Black





# GRISHKO® BLACK LABEL

«Truth is like fire; to tell the truth means to glow and burn,» said Gustav Klimt, the storied avant-garde painter whose glistening, flaming works inspired our new Black Label collection.

With these leotards, we made his works leave the frame — quite literally — and brought their light and energy to you. Why?

Because ballerinas are a living art, too. From head to toes, glowing and burning from within. They are light and they are fire — just like Klimt's works.

Because true art can never stay within a frame. Our Black Label collection transcends borders between different forms of art and adds bohemian charm to your classical ballet look.

If you create fire with every step on stage, if your dance pulsates with emotion, if you are not afraid to stand out — these pieces are for you.

**GRISHKO® BLACK LABEL.  
DO ART. BE ART.**







Diana  
Camisole leotard  
Blossoming Garden

## Dina

Tank style leotard

Boat neck tank style leotard has a gorgeous mid open back that also features an adjustable pinch. This very special garment features a print inspired by the great artist Gustav Klimt.



Adult sizes

DA3030LP Dina						
International size	XXS	XS	S	M	L	XL
Size RU	40	42	44	46	48	50

Material:  
80% polyester, 20% elastane

Fully front lined, pockets for cups.

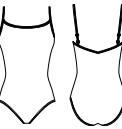
Color:  
Blossoming Garden



## Diana

Camisole leotard

A gorgeous adjustable camisole strap leotard with an elegant open mid back. Stunning Gustav Klimt inspired print is showcased on this lovely leotard.



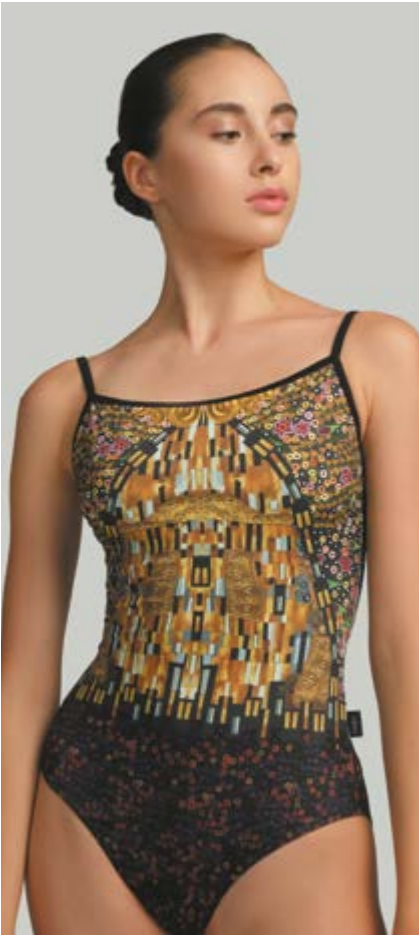
Adult sizes

DA3031LP						
International size	XXS	XS	S	M	L	XL
Size RU	40	42	44	46	48	50

Material:  
80% polyester, 20% elastane

Fully front lined, pockets for cups.

Color:  
Blossoming Garden





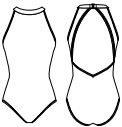


**Dimetria**  
Cap sleeve leotard  
Blossoming Garden

# Dionysia

High neck leotard

This gorgeous high neck leotard with timeless Klimt inspired print has a large keyhole on the back that's surrounded by strong soft mesh detail.



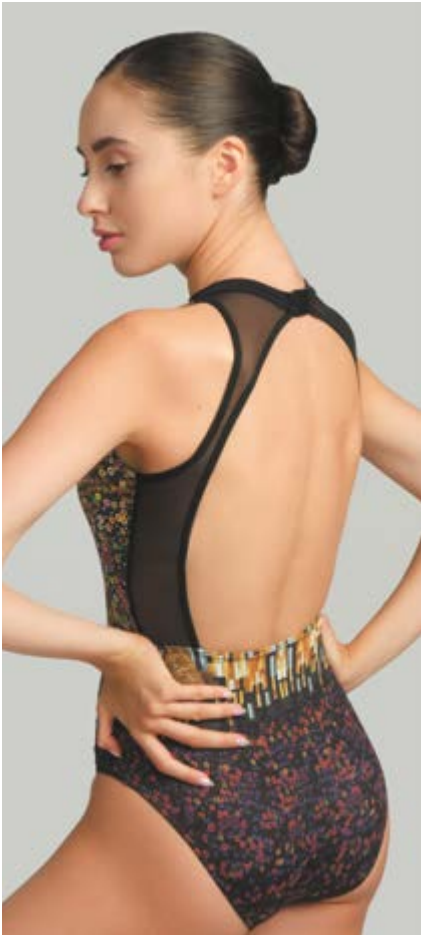
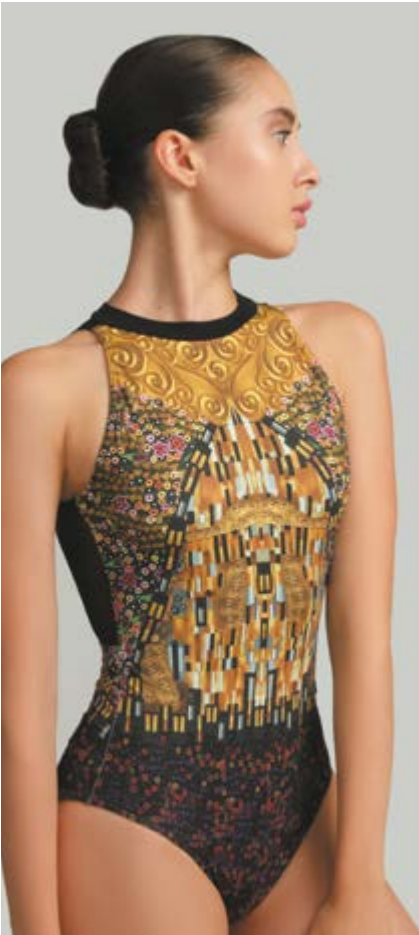
Adult sizes  
**DA3032LP**

International size	XXS	XS	S	M	L	XL
Size RU	40	42	44	46	48	50

Material:  
80% polyester, 20% elastane

**Fully front lined, pockets for cups.**

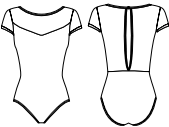
Color:  
Blossoming Garden



# Dimetria

Cap sleeve leotard

Sweetheart neckline and cap sleeves. Beautiful mesh cross-over mock wrap detail on lower back. Elegant black mesh makes this Klimt inspired print even more sophisticated.



Adult sizes  
**DA3033LP**

International size	XXS	XS	S	M	L	XL
Size RU	40	42	44	46	48	50

Material:  
80% polyester, 20% elastane

**Fully front lined, pockets for cups.**

Color:  
Blossoming Garden







# CLASSIC EXCELLENCE

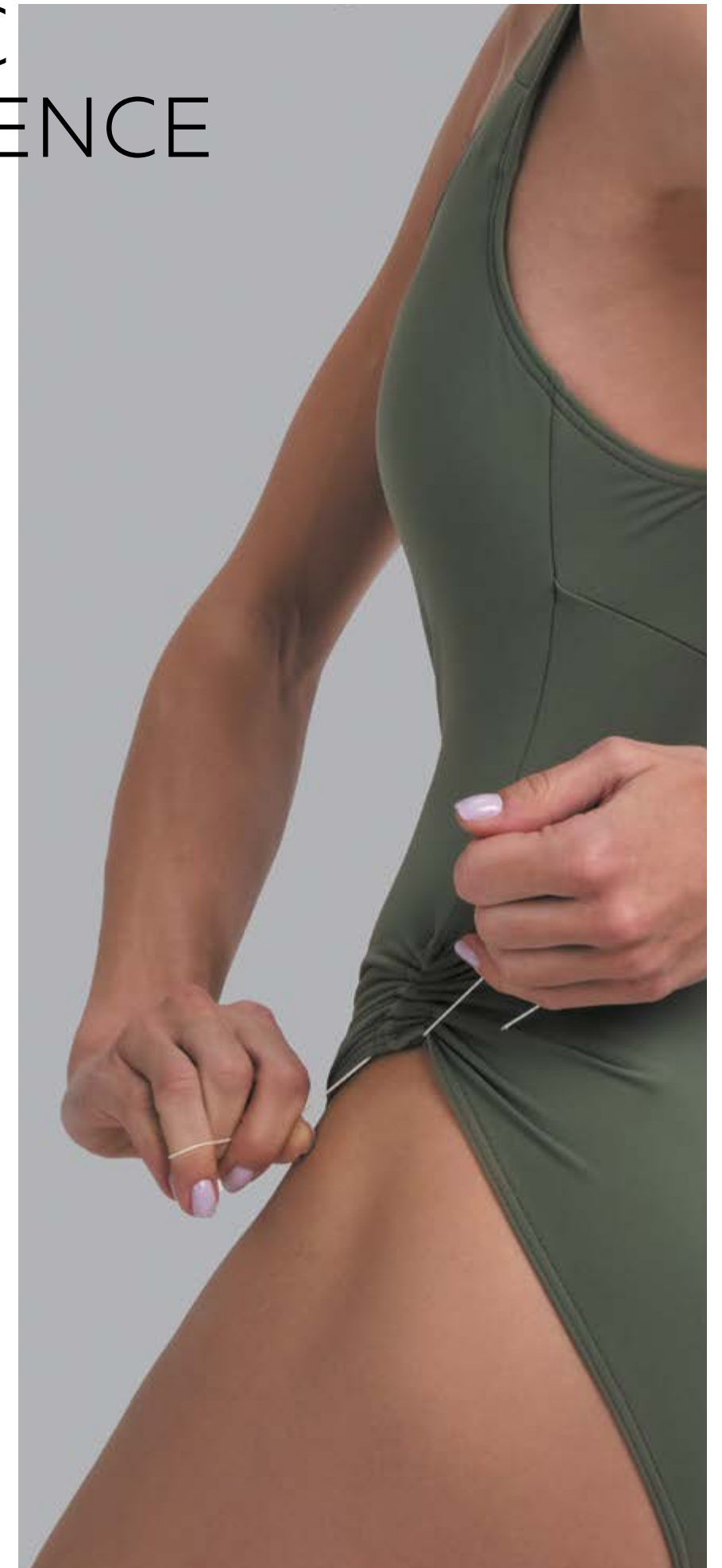
Classic Excellence Collection is the best uniform range on the market.

Our premium basics are created for the passion of dance. Upscale Italian materials and impeccable patterns create the perfect look and feel. Unique range of silhouettes and colors from classic to modern provide multiple options for dancers of every level.

All adult Classic Excellence leotards feature a removable bra cup pockets in the lining while youth sizes are fully front lined.

New hip line adjustment element is added as a modern take on a classic line.

**CLASSIC EXCELLENCE — TRADITION PERFECTED.**





# Elena

Camisole leotard  
Red

# Echo

Mesh skirt  
Red



## Emely

Camisole leotard

A gorgeous adjustable camisole strap leotard with fixed front pinch and adjustable hip pinch details. Open mid-back and elegant sweetheart bustline. Ideal leotard for uniform, classic elegance with modern flair.



Youth sizes

### DAD2001MP Little Emely

Sizing by age	5-6Y	6-7Y	8-9Y	9-10Y	10-11Y	12-13Y
Size RU	28	30	32	34	36	38

Adult sizes

### DA2001MP Emely

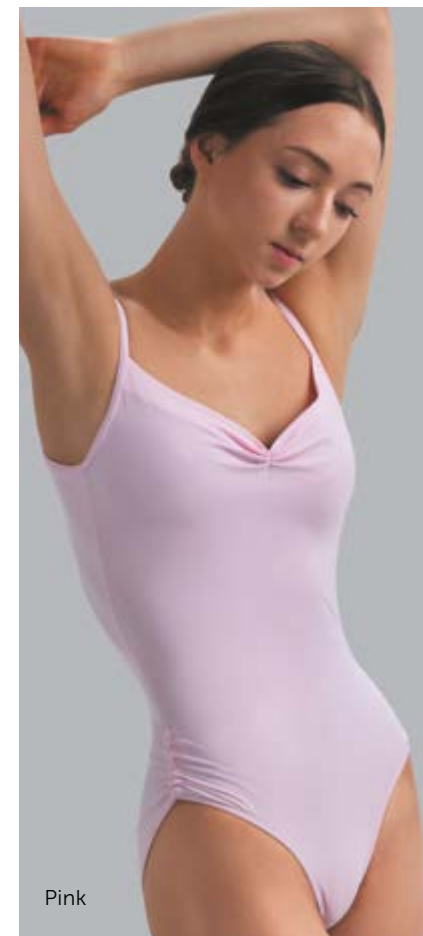
International size	XXS	XS	S	M	L	XL
Size RU		40	42	44	46	48 50

Material: 80% polyamide micro, 20% elastane.

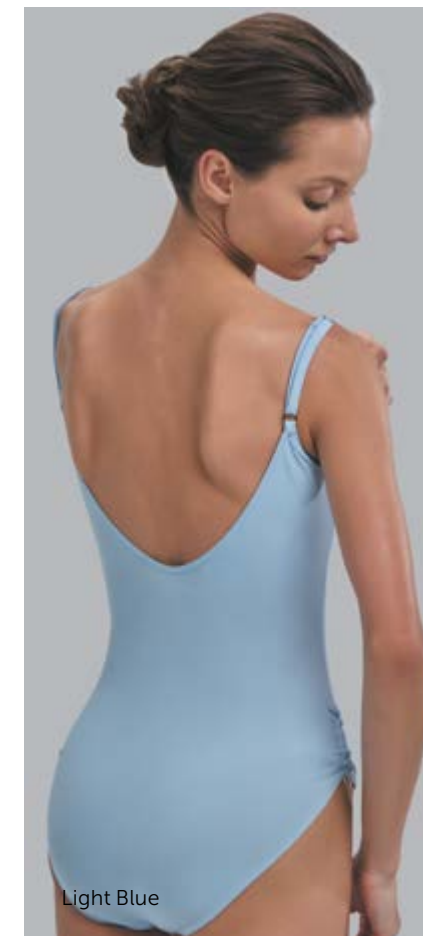
**Sizes 28 (5-6 Y) — 36 (10-11 Y): fully front lined.**  
**Sizes 38 (12-13 Y) — 50 (XL): fully front lined, pockets for cups.**

Color:

- |             |              |       |
|-------------|--------------|-------|
| Ice Blue    | Light Navy   | Lilac |
| Light Blue  | Royal Blue   | Pink  |
| French Blue | Lavender     | Red   |
| Bordeaux    | Olive        | Black |
| Coffee      | Tiffany      | White |
| Dark Grey   | Medium Taupe |       |



Pink

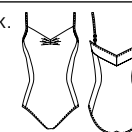


Light Blue

## Elena

Camisole leotard

A new take on a favorite look. Princess seams on front and back. Double V-back detail, fixed pinch front, adjustable camisole straps. Also featuring a premium Italian full front lining with bra cup pockets.



Youth sizes

### DAD2001/1MP Little Elena

Sizing by age	5-6Y	6-7Y	8-9Y	9-10Y	10-11Y	12-13Y
Size RU	28	30	32	34	36	38

Adult sizes

### DA2001/1MP Elena

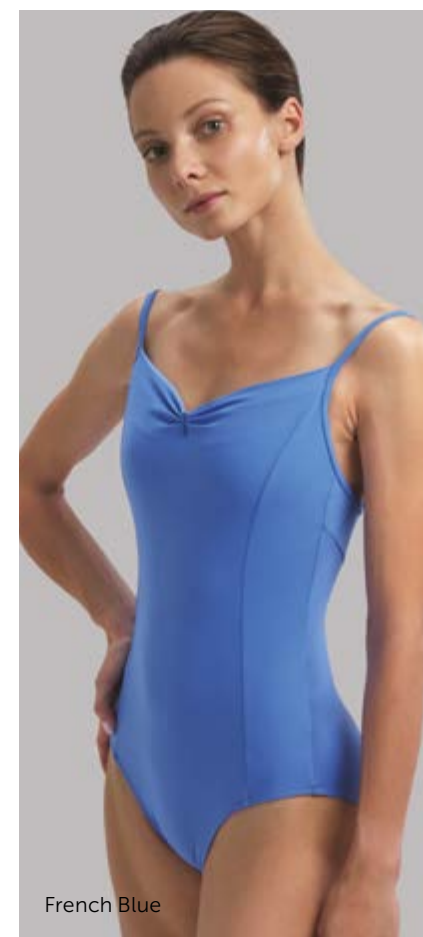
International size	XXS	XS	S	M	L	XL
Size RU		40	42	44	46	48 50

Material: 80% polyamide micro, 20% elastane.

**Sizes 28 (5-6 Y) — 36 (10-11 Y): fully front lined.**  
**Sizes 38 (12-13 Y) — 50 (XL): fully front lined, pockets for cups.**

Color:

- |             |              |       |
|-------------|--------------|-------|
| Ice Blue    | Light Navy   | Lilac |
| Light Blue  | Royal Blue   | Pink  |
| French Blue | Lavender     | Red   |
| Bordeaux    | Olive        | Black |
| Coffee      | Tiffany      | White |
| Dark Grey   | Medium Taupe |       |



French Blue



Red



Ella

Camisole leotard

Adjustable camisole leotard with elegant princess seams and mesh back detail in V shape as well as a fixed sweetheart bust line pinch.



Youth sizes

DAD2001/2MP Little Ella

Sizing by age	5-6Y	6-7Y	8-9Y	9-10Y	10-11Y	12-13Y
Size RU	28	30	32	34	36	38

Adult sizes

DA2001/2MP Ella

International size	XXS	XS	S	M	L	XL
Size RU	40	42	44	46	48	50

Material: 80% polyamide micro, 20% elastane.

Sizes 28 (5-6 Y) — 36 (10-11 Y): fully front lined.  
Sizes 38 (12-13 Y) — 50 (XL): fully front lined, pockets for cups.

Color:

- Ice Blue

Light Blue

French Blue

Bordeaux

Coffee

Dark Grey
- Light Navy

Royal Blue

Lavender

Olive

Tiffany

Medium Taupe
- Lilac

Pink

Red

Black

White



Ice Blue



Lilac

Eva

Tank style leotard

Tank style cut leotard featuring full front lining and open U mid-back. Secure and comfor table straps. Fixed bust pinch. Adjustable leg line.



Youth sizes

DAD2002MP Little Eva

Sizing by age	5-6Y	6-7Y	8-9Y	9-10Y	10-11Y	12-13Y
Size RU	28	30	32	34	36	38

Adult sizes

DA2002MP Eva

International size	XXS	XS	S	M	L	XL
Size RU	40	42	44	46	48	50

Material: 80% polyamide micro, 20% elastane.

Sizes 28 (5-6 Y) — 36 (10-11 Y): fully front lined.  
Sizes 38 (12-13 Y) — 50 (XL): fully front lined, pockets for cups.

Color:

- Ice Blue

Light Blue

French Blue

Bordeaux

Coffee

Dark Grey
- Light Navy

Royal Blue

Lavender

Olive

Tiffany

Medium Taupe
- Lilac

Pink

Red

Black

White



Olive



Light Navy

Elsa

Tank style leotard

A gorgeous V-back line with four-way stretch mesh back details. Tank style with fixed front pinch creating a beautiful sweetheart neckline. Princess seams create a contouring line.



Youth sizes

DAD2002/2MP Little Elsa

Sizing by age	5-6Y	6-7Y	8-9Y	9-10Y	10-11Y	12-13Y
Size RU	28	30	32	34	36	38

Adult sizes

DA2002/2MP Elsa

International size	XXS	XS	S	M	L	XL
Size RU	40	42	44	46	48	50

Material: 80% polyamide micro, 20% elastane.

Sizes 28 (5-6 Y) — 36 (10-11 Y): fully front lined.  
Sizes 38 (12-13 Y) — 50 (XL): fully front lined, pockets for cups.

Color:

- Ice Blue

Light Blue

French Blue

Bordeaux

Coffee

Dark Grey
- Light Navy

Royal Blue

Lavender

Olive

Tiffany

Medium Taupe
- Lilac

Pink

Red

Black

White



Lavender

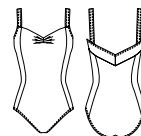


Black

Ellen

Tank style leotard

Tank style leotard featuring elegant princess seams and double V-back. Classic pattern with modern flair, secure and supportive straps. Sweetheart fixed pinch.



Youth sizes

DAD2002/1MP Little Ellen

Sizing by age	5-6Y	6-7Y	8-9Y	9-10Y	10-11Y	12-13Y
Size RU	28	30	32	34	36	38

Adult sizes

DA2002/1MP Ellen

International size	XXS	XS	S	M	L	XL
Size RU	40	42	44	46	48	50

Material: 80% polyamide micro, 20% elastane.

Sizes 28 (5-6 Y) — 36 (10-11 Y): fully front lined.  
Sizes 38 (12-13 Y) — 50 (XL): fully front lined, pockets for cups.

Color:

- Ice Blue

Light Blue

French Blue

Bordeaux

Coffee

Dark Grey
- Light Navy

Royal Blue

Lavender

Olive

Tiffany

Medium Taupe
- Lilac

Pink

Red

Black

White



Coffee



Royal Blue

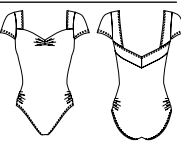




Effie  
Cap sleeve leotard  
Lilac

Erica  
Cap sleeve leotard

Fixed pinch front with sweetheart neckline, double V back cut. Cap sleeve leotard with adjustable hip line. Lining includes a removable bra cup pocket.



Youth sizes

**DAD2003MP Little Erica**

Sizing by age	5-6Y	6-7Y	8-9Y	9-10Y	10-11Y	12-13Y
Size RU	28	30	32	34	36	38

Adult sizes

**DA2003MP Erica**

International size	XXS	XS	S	M	L	XL
Size RU		40	42	44	46	48 50

- Material: 80% polyamide micro, 20% elastane.
- Sizes 28 (5-6 Y) — 36 (10-11 Y): fully front lined.  
Sizes 38 (12-13 Y) — 50 (XL): fully front lined, pockets for cups.
- Color:
- Ice Blue
  - Light Blue
  - French Blue
  - Bordeaux
  - Coffee
  - Dark Grey
  - Light Navy
  - Royal Blue
  - Lavender
  - Olive
  - Tiffany
  - Medium Taupe
  - Lilac
  - Pink
  - Red
  - Black
  - White



Bordeaux



Pink

Effie  
Cap sleeve leotard

A breathtaking mesh sleeve and V back detail leotard with princess seams and a gorgeous ballet leg cut. Mesh sleeve is featured in four way stretch Italian tulle, the sleeve is not hemmed for comfort.



Youth sizes

**DAD2003/2MP Little Effie**

Sizing by age	5-6Y	6-7Y	8-9Y	9-10Y	10-11Y	12-13Y
Size RU	28	30	32	34	36	38

Adult sizes

**DA2003/2MP Effie**

International size	XXS	XS	S	M	L	XL
Size RU		40	42	44	46	48 50

- Material: 80% polyamide micro, 20% elastane.
- Sizes 28 (5-6 Y) — 36 (10-11 Y): fully front lined.  
Sizes 38 (12-13 Y) — 50 (XL): fully front lined, pockets for cups.
- Color:
- Ice Blue
  - Light Blue
  - French Blue
  - Bordeaux
  - Coffee
  - Dark Grey
  - Light Navy
  - Royal Blue
  - Lavender
  - Olive
  - Tiffany
  - Medium Taupe
  - Lilac
  - Pink
  - Red
  - Black
  - White



Lilac



Ice Blue



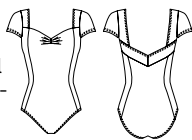
# Evita

Cap sleeve leotard  
Red

# Evita

Cap sleeve leotard

Cap sleeve leotard featuring square to V pinch fixed neck line. Beautiful lines created by the princess seams. Fully front lined with ballet leg cut. Double V back detailing.



Youth sizes

## DAD2003/1MP Little Evita

Sizing by age	5-6Y	6-7Y	8-9Y	9-10Y	10-11Y	12-13Y
Size RU	28	30	32	34	36	38

Adult sizes

## DA2003/1MP Evita

International size	XXS	XS	S	M	L	XL
Size RU		40	42	44	46	48 50

Material: 80% polyamide micro, 20% elastane.

**Sizes 28 (5-6 Y) – 36 (10-11 Y): fully front lined.**

**Sizes 38 (12-13 Y) – 50 (XL): fully front lined, pockets for cups.**

Color:

- Ice Blue

● Light Blue

● French Blue

● Bordeaux

● Coffee

● Dark Grey
- Light Navy

● Royal Blue

● Lavender

● Olive

● Tiffany

● Medium Taupe
- Lilac

● Pink

● Red

● Black

● White



Lavender

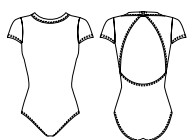


Red

# Earie

Cap sleeve leotard

High neck cap sleeve leotard with back of the neck closure. Ballet leg cut and classic lines. All Italian materials, latest pattern.



Youth sizes

## DAD2004MP Little Earie

Sizing by age	5-6Y	6-7Y	8-9Y	9-10Y	10-11Y	12-13Y
Size RU	28	30	32	34	36	38

Adult sizes

## DA2004MP Earie

International size	XXS	XS	S	M	L	XL
Size RU		40	42	44	46	48 50

Material: 80% polyamide micro, 20% elastane.

**Sizes 28 (5-6 Y) – 36 (10-11 Y): fully front lined.**

**Sizes 38 (12-13 Y) – 50 (XL): fully front lined, pockets for cups.**

Color:

- Ice Blue

● Light Blue

● French Blue

● Bordeaux

● Coffee

● Dark Grey
- Light Navy

● Royal Blue

● Lavender

● Olive

● Tiffany

● Medium Taupe
- Lilac

● Pink

● Red

● Black

● White



Light Navy



Coffee



# Little Emma

Camisole leotard

This delicate skirted leotard features an adjustable pinch bust line, a mesh back insert and adjustable straps. Attached mesh skirt is 20 cm long in the front and 25,5 cm in the back on size 10-11.

Youth sizes

DAD2001/2MPJU Little Emma

Sizing by age	4-5Y	5-6Y	6-7Y	8-9Y	9-10Y	10-11Y	12-13Y
Size RU	26	28	30	32	34	36	38

Material: 80% polyamide micro, 20% elastane.

Sizes 26 (4-5 Y) – 38 (12-13 Y): fully front lined.

- Color:
- Ice Blue

Light Blue

French Blue

Bordeaux

Coffee

Dark Grey

Light Navy

Royal Blue

Lavender

Olive

Tiffany

Medium Taupe

Lilac

Pink

Red

Black

White



# Little Emerald

Tank style leotard

Traditional tank style skirted leotard has the perfect details: princess seams, a set pinch at the bust line, and a double V back. Attached mesh skirt is 20 cm in the front and 25,5 cm long in the back on size 10-11.

Youth sizes

DAD2002/1MPJU Little Emerald

Sizing by age	4-5Y	5-6Y	6-7Y	8-9Y	9-10Y	10-11Y	12-13Y
Size RU	26	28	30	32	34	36	38

Material: 80% polyamide micro, 20% elastane.

Sizes 26 (4-5 Y) – 38 (12-13 Y): fully front lined.

- Color:
- Ice Blue

Light Blue

French Blue

Bordeaux

Coffee

Dark Grey

Light Navy

Royal Blue

Lavender

Olive

Tiffany

Medium Taupe

Lilac

Pink

Red

Black

White



# Little Emory

Cap sleeve leotard

This feminine cap sleeve skirted leotard has all the sweet frills: a set pinch at the bust line, princess seams, and a double V back. The attached mesh skirt is 20 cm long in the front and 25,5 cm in the back on size 10-11.

Youth sizes

DAD2003/1MPJU Little Emory

Sizing by age	4-5Y	5-6Y	6-7Y	8-9Y	9-10Y	10-11Y	12-13Y
Size RU	26	28	30	32	34	36	38

Material: 80% polyamide micro, 20% elastane.

Sizes 26 (4-5 Y) – 38 (12-13 Y): fully front lined.

- Color:
- Ice Blue

Light Blue

French Blue

Bordeaux

Coffee

Dark Grey

Light Navy

Royal Blue

Lavender

Olive

Tiffany

Medium Taupe

Lilac

Pink

Red

Black

White

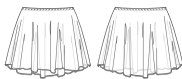




# Echo

Mesh skirt

A new take on an old favorite, Italian four-way stretch mesh pull-on skirt. Hemless skirt is made for an easy length adjustment. Longer on back for a classic line.



Youth sizes

**DAD2005 Little Echo**

Sizing by age	5-6Y	6-7Y	8-9Y	9-10Y	10-11Y	12-13Y
Size RU	28	30	32	34	36	38

Adult sizes

**DA2005 Echo**

International size	XXS	XS	S	M	L	XL
Size RU	40	42	44	46	48	50

Material: 93% polyamide, 7% elastane.

- Color:
- Ice Blue

Light Navy

Lilac

Light Blue

Royal Blue

Pink

French Blue

Lavender

Red

Bordeaux

Olive

Black

Coffee

Tiffany

White

Dark Grey

Medium Taupe



Ice Blue



Light Navy

# Eden

Mesh skirt with ties

A classic wrap skirt with stretch waistband, length can be adjusted on any size due to no hem edging. High quality Italian stretch mesh will not run when cut.



Youth sizes

**DAD2006 Little Eden**

Sizing by age	5-6Y	6-7Y	8-9Y	9-10Y	10-11Y	12-13Y
Size RU	28	30	32	34	36	38

Adult sizes

**DA2006 Eden**

International size	XXS	XS	S	M	L	XL
Size RU	40	42	44	46	48	50

Material: 93% polyamide, 7% elastane.

- Color:
- Ice Blue

Light Navy

Lilac

Light Blue

Royal Blue

Pink

French Blue

Lavender

Red

Bordeaux

Olive

Black

Coffee

Tiffany

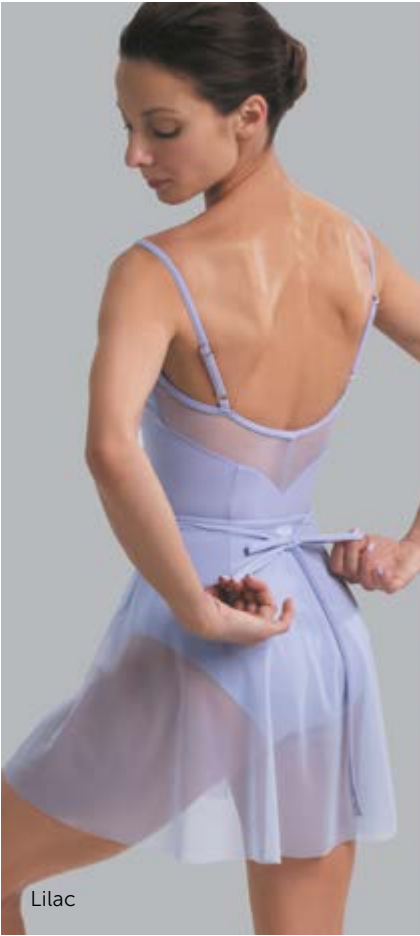
White

Dark Grey

Medium Taupe



Bordeaux



Lilac

# Practice tutu

5-Layer Tutu skirt

Adult sizes

**0455/3**

International size	XXS	XS	S	M	L	XL
Size RU	40	42	44	46	48	50

Material: 100% nylon

# Practice tutu

7-Layer Tutu skirt

Adult sizes

**0455**

International size	XXS	XS	S	M	L	XL
Size RU	40	42	44	46	48	50

Material: 100% nylon

Five & Seven layer hooped practice tutu with built in ruffled panty. Featuring Italian and English tulle. Our tutus are made in the greatest traditions of Russian ballet all made by hand by the most skilled tutu makers in the world.



<div>Bianco</div> <div>010</div>	<div>Cerise</div> <div>024</div>	<div>Mela</div> <div>038</div>	<div>Viola</div> <div>028</div>
<div>Seta</div> <div>008</div>	<div>Ciclamino</div> <div>035</div>	<div>Verde</div> <div>021</div>	<div>Lilla</div> <div>027</div>
<div>Avorio</div> <div>009</div>	<div>Rosso</div> <div>026</div>	<div>Olivo</div> <div>040</div>	<div>Glicine</div> <div>059</div>
<div>Panna</div> <div>013</div>	<div>Bordeaux</div> <div>030</div>	<div>Oceano</div> <div>020</div>	<div>Castoro</div> <div>043</div>
<div>Sabbia</div> <div>007</div>	<div>Arancio</div> <div>025</div>	<div>Nilo</div> <div>032</div>	<div>Marrone</div> <div>029</div>
<div>Pesco</div> <div>014</div>	<div>Oro</div> <div>023</div>	<div>Cielo</div> <div>112</div>	<div>Grigio</div> <div>033</div>
<div>Salmone</div> <div>031</div>	<div>Limone</div> <div>022</div>	<div>Pavone</div> <div>016</div>	<div>Fumo</div> <div>034</div>
<div>Rosa</div> <div>011</div>	<div>Pistacchio</div> <div>019</div>	<div>Azzuro</div> <div>017</div>	<div>Nero</div> <div>015</div>
<div>Pink</div> <div>111</div>	<div>Cidro flo</div> <div>003</div>	<div>Bleu</div> <div>018</div>	<div>Azalea flo</div> <div>001</div>
	<div>Verde flo</div> <div>004</div>	<div>Marine</div> <div>036</div>	<div>Arancio flo</div> <div>002</div>





VAGANOVA  
BALLET  
ACADEMY



# GRISHKO® ACADEMY

The best teachers know that the key of future success is always in details. This has become the main reason for collaboration of GRISHKO® with the worldwide famous ballet schools – The Bolshoi Ballet Academy, Vaganova Academy of Russian Ballet, Boris Eifman Dance Academy.

The secret of GRISHKO® uniform popularity is in its refined form. It's the carefully verified line of the back that allows the teacher to control the correct work of shoulders and neck, the form of hip cut that makes the movement easy, staying on the same place even during the most intensive exercises, and exceptional quality of fabrics.

All leotards are fully front lined and most feature removable bra cup pockets in the lining.



BOLSHOI  
BALLET  
ACADEMY







# Colette

Leotard with straps

Vaganova Ballet Academy uniform. Adjustable pinch front. Adjustable camisole straps. Classic ballet leg cut.



Youth sizes

DAD1491MP Little Colette				
Sizing by age	8-9 Y	9-10 Y	10-11 Y	12-13 Y
Size RU	32	34	36	38

Adult sizes

**DA1491MP Colette**

International size	XXS	XS	S	M	L	XL
Size RU	40	42	44	46	48	50

Material: 80% polyamide micro, 20% elastane.

**Sizes 32 (8-9 Y) — 36 (10-11 Y): fully front lined.**

**Sizes 38 (12-13 Y) — 50 (XL): fully front lined, pockets for cups.**

Color:

Ice Blue	Light Blue	Red
Lilac	Pink	White
Coffee	Dark Blue	Black



Pink



Coffee

# Caroline

Leotard with straps and mesh

Bolshoi Ballet Academy uniform. Adjustable pinch front. Mid back opening. 4-way stretch mesh detail. Secure adjustable camisole straps.



Youth sizes

DAD1491/1MP Little Caroline				
Sizing by age	8-9 Y	9-10 Y	10-11 Y	12-13 Y
Size RU	32	34	36	38

Adult sizes

DA1491/1MP Caroline						
International size	XXS	XS	S	M	L	XL
Size RU	40	42	44	46	48	50

Material: 80% polyamide micro, 20% elastane.

**Sizes 32 (8-9 Y) — 36 (10-11 Y): fully front lined.**

**Sizes 38 (12-13 Y) — 50 (XL): fully front lined, pockets for cups.**

Color:

Ice Blue	Light Blue	Red
Lilac	Pink	White
Coffee	Dark Blue	Black



Lilac



Light Blue

# Christal

Leotard with straps

Classic leotard with adjustable straps and princess seams on front and back that make the figure look even more graceful. Adjustable pinch front.



Youth sizes

DAD1001MP Little Christal				
Sizing by age	8-9 Y	9-10 Y	10-11 Y	12-13 Y
Size RU	32	34	36	38

Adult sizes

**DA1001MP Christal**

International size	XXS	XS	S	M	L	XL
Size RU	40	42	44	46	48	50

Material: 80% polyamide micro, 20% elastane.

**Sizes 32 (8-9 Y) — 36 (10-11 Y): fully front lined.**

**Sizes 38 (12-13 Y) — 50 (XL): fully front lined, pockets for cups.**

Color:

Ice Blue	Light Blue	Red
Lilac	Pink	White
Coffee	Dark Blue	Black



Coffee



Pink



# Camilla

Camisole leotard

Best seller the world over!  
Elegant back design.  
Elastic detailing crisscrossing  
on front. Adjustable straps.



Youth sizes  
**DAD1258MP Little Camilla**

Sizing by age	10-11 Y	12-13 Y
Size RU	36	38

Adult sizes  
**DA1258MP Camilla**

International size	XXS	XS	S	M	L	XL
Size RU	40	42	44	46	48	50

Material:  
80% polyamide micro, 20% elastane.  
**Sizes 36 (10-11 Y): fully front lined.**  
**Sizes 38 (12-13 Y) — 50 (XL): fully front lined, pockets for cups.**  
Color:  

Ice Blue

Dark Blue

Coffee

Black



Ice Blue

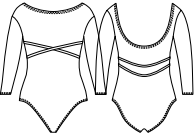


Ice Blue

# Carissa

3/4 sleeve leotard

We added 3/4 length sleeves to our  
top seller DA1258MP for winter time.  
This lovely leotard will keep you warm.



Adult sizes  
**DA1260MP Carissa**

International size	XXS	XS	S	M	L	XL
Size RU	40	42	44	46	48	50

Material:  
80% polyamide micro, 20% elastane.  
**Fully front lined, pockets for cups.**  
Color:  

Ice Blue

Dark Blue

Coffee

Black



Coffee



Coffee



**Camilla**  
Camisole leotard  
Coffee



# Charlotte

Camisole leotard

Style preferable for elder classes and performances — the straps made of nude elastic and the front detail create a slim and airy silhouette.



Youth sizes

**DAD1930MP Little Charlotte**

Sizing by age	10-11 Y	12-13 Y
Size RU	36	38

Adult sizes

**DA1930MP Charlotte**

International size	XXS	XS	S	M	L	XL
Size RU	40	42	44	46	48	50

Material:  
80% polyamide micro, 20% elastane.

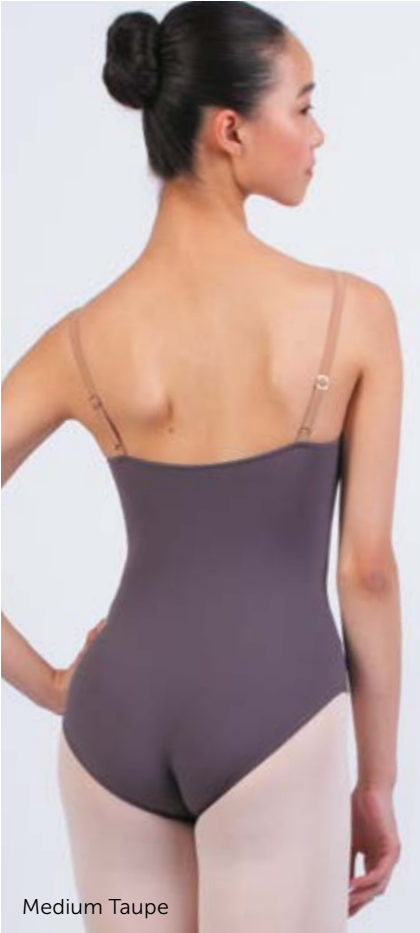
**Sizes 36 (10-11 Y): fully front lined.**  
**Sizes 38 (12-13 Y) — 50 (XL): fully front lined, pockets for cups.**

Color:

- Pink
- Olive
- Royal Blue
- Red
- Coffee
- White
- Lilac
- Black
- Light Navy
- Ice Blue
- Dark Blue
- Light Blue
- Medium Taupe



Medium Taupe

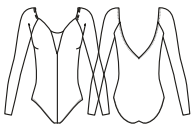


Medium Taupe

# Carlotta

Leotard with long sleeve

Created in 2019 for qualification exams at the Bolshoi Ballet Academy, this model drew rave reviews.



Youth sizes

**DAD1931MP Little Carlotta**

Sizing by age	8-9 Y	9-10 Y	10-11 Y	12-13 Y
Size RU	32	34	36	38

Adult sizes

**DA1931MP Carlotta**

International size	XXS	XS	S	M	L	XL
Size RU	40	42	44	46	48	50

Material:  
80% polyamide micro, 20% elastane.

**Sizes 32 (8-9 Y) — 36 (10-11 Y): fully front lined.**  
**Sizes 38 (12-13 Y) — 50 (XL): fully front lined, pockets for cups.**

Color:

- Pink
- Coffee
- White
- Red
- Royal Blue
- Light Blue
- Lilac
- Black
- Ice Blue
- Dark Blue
- Medium Taupe



Black



Black



## Charlotte

Camisole leotard  
Coffee

## Celine

Mesh skirt  
Coffee

## Carlotta

Leotard with long sleeve  
Medium Taupe



# Celine

Mesh skirt

Short mesh skirt with wide elastic belt to underline the waist — very popular mock wrap design loved by dancers all over.



Youth sizes  
**DAD1945MP Little Celine**

Sizing by age	10-11 Y	12-13 Y
Size RU	36	38

Adult sizes  
**DA1945MP Celine**

International size	XXS	XS	S	M	L	XL
Size RU	40	42	44	46	48	50

Material: Belt: 80% polyamide micro, 20% elastane., Skirt: 93% polyamide, 7% elastane. Length: 33 cm  
Color:

Pink

Red

Lilac

Ice Blue

Olive

Coffee

Black

Medium Taupe

Royal Blue

White

Light Navy



Medium Taupe



Black

# Calyssa

Folk and character skirt

Long two-layer skirt of mesh with tulle underneath was made by order of Vaganova Academy for character and folk dance. Wide elastic belt can be fixed on waist or hips and airy mesh allows the dancer to feel free during any movements.



Youth sizes  
**DAD1478MP Little Calyssa**

Sizing by age	8-9 Y	9-10 Y	10-11 Y	12-13 Y
Size RU	32	34	36	38

Adult sizes  
**DA1478MP Calyssa**

International size	XXS	XS	S	M	L	XL
Size RU	40	42	44	46	48	50

Material: 93% polyamide, 7% elastane. Size: 8-9 Y — 35 cm, Size: 9-10 Y — 40 cm, Size: 11-13 Y — 45 cm, Size: XXS — 50 cm, Size: XS-XL — 55 cm  
Color:

White

Pink

Lilac

Royal Blue

Coffee

Black

Light Blue

Ice Blue

Medium Taupe



Ice Blue



Ice Blue



# Caroline

Leotard with straps and mesh Lilac

# Calyssa

Folk and character skirt Lilac







# KNITTED WARM-UP

GRISHKO® knitwear collection is made with the highest quality merino wool. The wool is sourced from the best knitting producers in the world, and our designs are carefully cut for dancers' bodies. Quality and design are unsurpassed.



High-technology production processing makes the ready garment soft and not itchy.



Color stays bright after dozens of washing cycles.



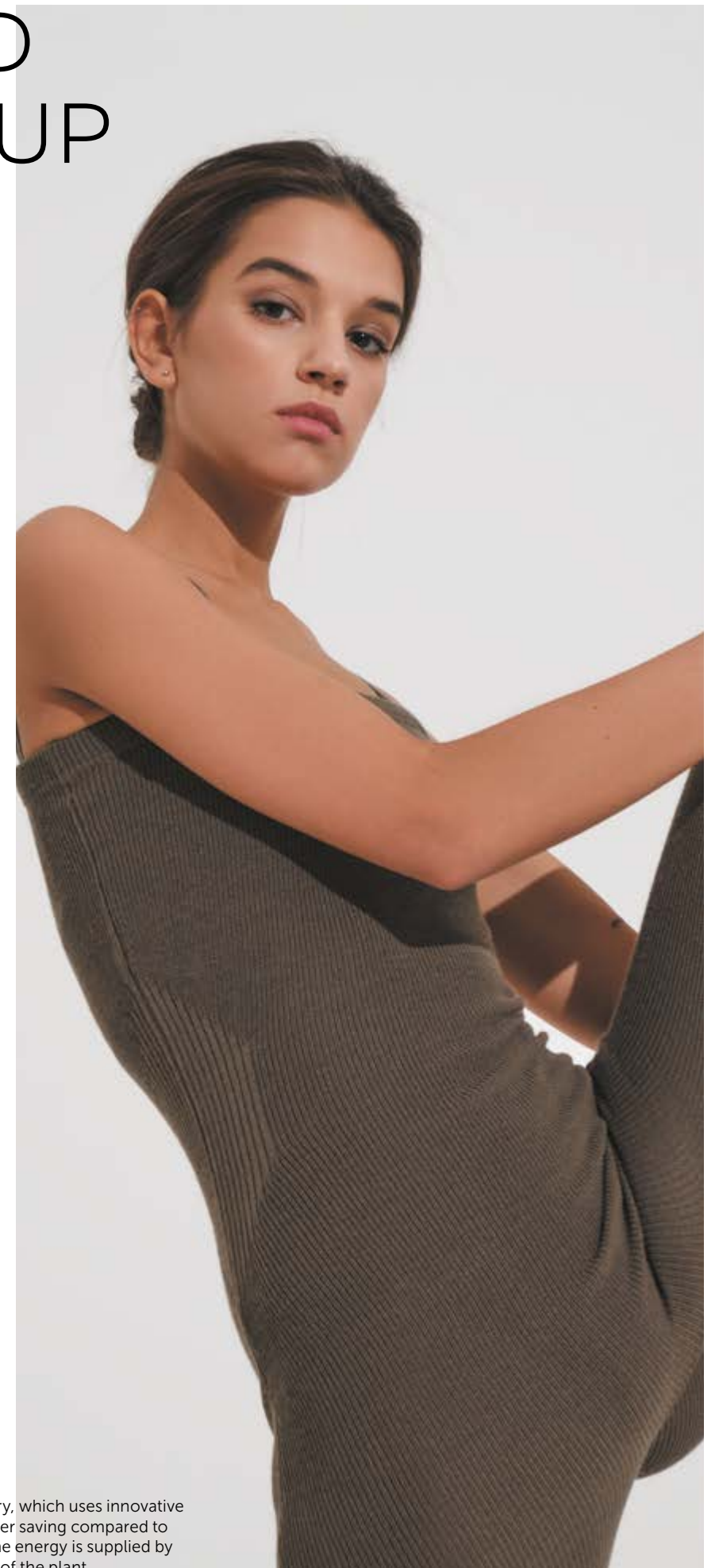
The yarn complies with the German, Italian and European Laws regarding the prohibition of the use of toxic substances.



Super comfort is achieved by purl-knitting technique that allows the garment to follow body curvature perfectly.



ECO. The yarn is made by a sustainable factory, which uses innovative dyeing on cones that can achieve 50% of water saving compared to conventional dyeing. Also the large part of the energy is supplied by the photovoltaic system installed on the roof of the plant.

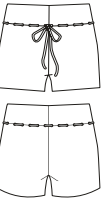




# Katherine

Shorts

Warm up shorts with adjustable draw-string. Higher waist line for comfort and style. Premium Merino wool.



## 06202/2 Katherine

Sizing by age	8–10Y
Size RU	32–34

Color:

● Black

Age / International size	11–12Y	XXS–XS	S–M	L–XL
Size RU	36–38	40–42	44–46	48–50

Color:

● Black ● Grey-Blue

● Khaki ● Bordeaux

Material: 50% merino wool, 50% acryl



Khaki



Grey-Blue

# Kelly

Pants

Gorgeous full length pants with tapered leg. Two pockets and adjustable waist drawstring. Features soft premium merino wool, hypoallergenic, fast drying and comfortable.



## 06206/2 Kelly

Sizing by age	8–10Y
Size RU	32–34

Color:

● Black

Age / International size	11–12Y	XXS–XS	S–M	L–XL
Size RU	36–38	40–42	44–46	48–50

Color:

● Black ● Grey-Blue

● Khaki ● Bordeaux

Material: 50% merino wool, 50% acryl



Bordeaux



Grey-Blue

## KNITTED WARM-UP

# Kaden

Legwarmers

Merino wool full length legwarmers. Elasticated edges keep these legwarmers above the ankle. Additional elastane reinforcement on the top. Soft and comfortable.



## 06208/2 Kaden

Size: one size  
Length: 60 cm  
Material: 50% merino wool, 50% acryl  
Color:

● Pink

● Light Blue

● Black

## 06209/2 Kaden

Size: one size  
Length: 80 cm  
Material: 50% merino wool, 50% acryl  
Color:

● Bordeaux

● Khaki ● Grey-Blue

● Black ● Light Blue



Grey-Blue



Pink

# Kane

Unitard

Full length unitard with tank style straps cinching detail on the waist. Tapered leg cut. Purl-knitting technology follows the body and gives extra comfort during warm-up. Soft premium merino wool, hypoallergenic and stylish.



## 06211/2 Kane

Sizing by age	8–10Y	11–12Y
Size RU	32–34	36–38

Color:

● Pink

● Light Blue

● Black

Age / International size	XXS–XS	S–M	L–XL
Size RU	40–42	44–46	48–50

Color:

● Black ● Grey-Blue

● Khaki ● Bordeaux

Material: 50% merino wool, 50% acryl



Bordeaux



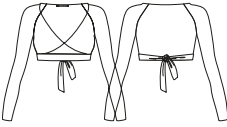
Grey-Blue



# Kailani

Bolero

A bolero style wrap sweater. Premium knit of Merino wool. This sweater is one of the most comfortable and stylish warmups you can find.



06212/2 Kailani

Sizing by age	8–10Y	11-12Y
Size RU	32–34	36-38

Color:

- Pink
- Light Blue
- Black

Age / International size	XXS–XS	S–M	L–XL
Size RU	40–42	44–46	48–50

Color:

- Black
- Grey-Blue
- Khaki
- Bordeaux

Material: 50% merino wool, 50% acryl



Grey-Blue



Bordeaux



## Kailani

Bolero  
Grey-Blue

## Kelly

Pants  
Grey-Blue





# HEAT RETENTION WEAR

The Heat Retention Wear new collection is designed with the fusion of high-tech materials and insider knowledge of the dancers' needs. With the membrane coated fabric you can easily minimize the time needed for workout.



Membrane fabric



Odor control



100% Thermal isolation



Bi-stretch



Super quiet



Machine washable

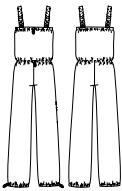




# Bowie

Unitard with sauna effect

Full length unitard featuring comfortable straps over the shoulder, cinch top, waist and cuff.



Adult sizes  
**0403PT Bowie**

International size	XXS	XS	S	M	L	XL	XXL
Size RU	40	42	44	46	48	50	52

Material: 100% polyester

Color:

- Ice Blue
- Grey
- Orchid Mist
- Blue
- Dusty Pink
- Bordeaux
- Black



Ice Blue

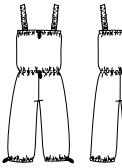


Orchid Mist

# Bobbie

Shortard with sauna effect

Short unitard with sauna effect is made of 100% polyester material featuring heat retention membrane, comfortable shoulder straps, waist and above the knee leg cinch.



Adult sizes  
**0404PT Bobbie**

International size	XXS	XS	S	M	L	XL	XXL
Size RU	40	42	44	46	48	50	52

Material: 100% polyester

Color:

- Ice Blue
- Grey
- Orchid Mist
- Blue
- Dusty Pink
- Bordeaux
- Black



Dusty Pink

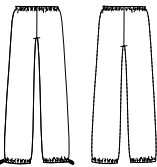


Orchid Mist

# Bliss

Pants with sauna effect

Full leg pants with comfortable waist elastic and cinch on waist as well as cuff. Bi-stretch material is comfortable and long lasting.



Adult sizes  
**0405PT Bliss**

International size	XXS	XS	S	M	L	XL	XXL
Size RU	40	42	44	46	48	50	52

Material: 100% polyester

Color:

- Ice Blue
- Grey
- Orchid Mist
- Blue
- Dusty Pink
- Bordeaux
- Black



Dusty Pink

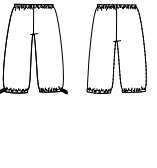


Ice Blue

# Blossom

Shortard with sauna effect

Knee length shorts with toggle on the cuff and comfortable elastic waistband. Heat retention membrane and fashionable colors.



Adult sizes  
**0406PT Blossom**

International size	XXS	XS	S	M	L	XL	XXL
Size RU	40	42	44	46	48	50	52

Material: 100% polyester

Color:

- Ice Blue
- Grey
- Orchid Mist
- Blue
- Dusty Pink
- Bordeaux
- Black



Ice Blue



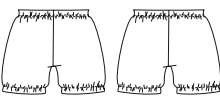
Dusty Pink





**Bae**  
 Shorts with sauna effect

New style added — short shorts, comfortable waistband and high tech heat retaining membrane.  
 Fashionable and fun colors.



Adult sizes

**0408 Bae**

International size	XXS	XS	S	M	L	XL	XXL
Size RU	40	42	44	46	48	50	52

- Material: 100% polyester
- Color:
- Ice Blue
  - Orchid Mist
  - Dusty Pink
  - Grey
  - Blue
  - Bordeaux
  - Black

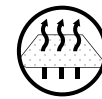






# SEAMLESS UNDERGARMENTS

When you are on stage, dancing the part of your dreams, your undergarments have their own role to perform — be invisible, soft as a feather and ensure proper hygiene of your body. That is what GRISHKO® underwear does for every dancer.



Made from ultralight microfiber, they allow your body to breathe, draw out moisture and keep your skin dry and comfortable throughout hours of dancing.



Meet the highest standards of hygiene, fend off infections and preserve the natural microclimate of your most sensitive areas.



Tear and stain resistant, GRISHKO® undergarments will preserve their elegant look after multiple uses and washings.

Take care of your body and achieve true greatness with GRISHKO® seamless underwear.



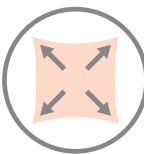




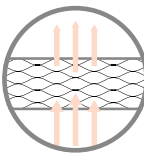
EACH DANCER CAN CUSTOMIZE THEIR UNDERGARMENT TO PERFECTLY FIT UNDER ANY GARMENT. DESIGNED TO BE INVISIBLE AND COMFORTABLE ON THE SKIN.



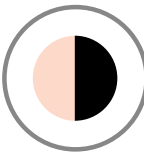
Perfect base for DIY — use scissors to make any form you need.



Stretchy — follows the shape of body during any movements.



Soft and breathable microfiber feels very omfortable on your skin.



Available in Black and Nude colors.



DA300PR  
THONG SEAMLESS BRIEFS



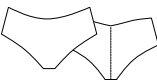
Size: XXS, XS, S, M, L  
86% polyamide, 14% elastane.  
● Nude ● Black



DA302PR  
HIPSTER SEAMLESS BRIEFS



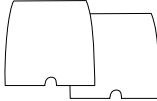
Size: XXS, XS, S, M, L  
86% polyamide, 14% elastane.  
● Nude ● Black



DA308PR  
HIGH RISE SEAMLESS SHORTS



Size: 9-10 Y, 10-11 Y, 12-13 Y, XXS, XS  
86% polyamide, 14% elastane.  
● Nude ● Black



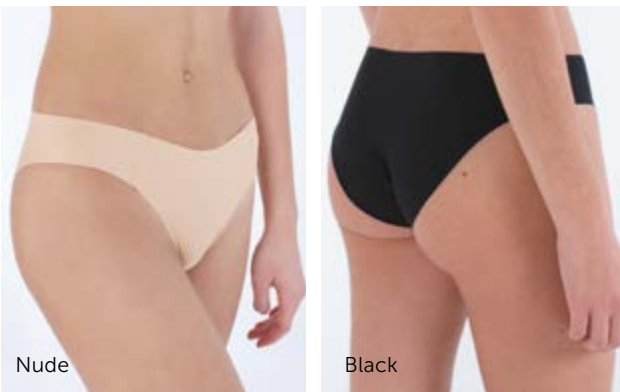
DA307PR  
LOW RISE SEAMLESS SHORTS



Size: 9-10 Y, 10-11 Y, 12-13 Y, XXS, XS  
86% polyamide, 14% elastane.  
● Nude ● Black



DA3015M  
SEAMLESS BRIEFS



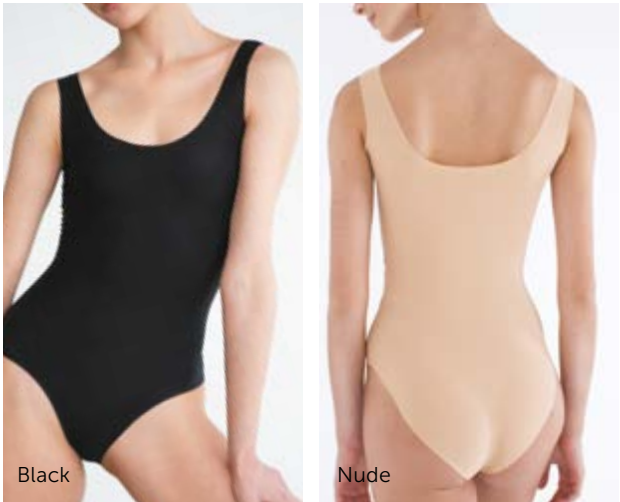
Size: XXS, XS, S, M, L  
86% polyamide, 14% elastane.  
● Nude ● Black



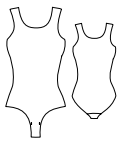




**DA303PR**  
**SEAMLESS LEOTARD**



Size: XXS, XS, S, M, L  
Material: 86% polyamide, 14% elastane.  
Color: ● Nude ● Black



**DA306PR**  
**SEAMLESS TOP**



Size: 9-10 Y, 10-11 Y, 12-13 Y, XXS, XS  
Material: 86% polyamide, 14% elastane.  
Color: ● Nude ● Black



**DA309PR**  
**SEAMLESS SUPPORT TOP**



Size: 9-10 Y, 10-11 Y, 12-13 Y, XXS, XS  
Material: 86% polyamide, 14% elastane.  
Color: ● Nude ● Black

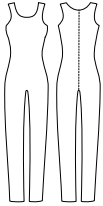


**DA305PR**  
**SEAMLESS UNITARD**



Youth sizes  
**DAD305PR**  
Size: 4 Y, 6 Y, 8 Y, 10 Y, 12 Y

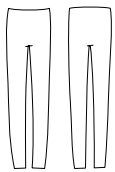
Adult sizes  
**DA305PR**  
Size: XXS, XS, S, M, L, XL, XXL  
Material: 86% polyamide, 14% elastane.  
Color: ● Nude ● Black



**DA304PR**  
**LEGGINGS**



Size: XXS, XS, S, M, L, XL, XXL  
Material: 86% polyamide, 14% elastane.  
Color: ● Nude ● Black







# TIGHTS

GRISHKO® tights highlight the exquisite lines of dancers' legs and demonstrate the work of their muscles.

They are produced from materials of superior quality and tailored to your needs:

- unparalleled stretching features guaranteed by extremely flexible fabrics, threads and seams;
- resistant to abrasion, rip and tear, GRISHKO® tights will stay with you for a record-long time;
- our tights maintain their shape and impeccable look throughout endless hours of training and rehearsals.



Do not roll or slide thanks to strong waistband.

If dance is a poetry of arms and legs, then our tights are the one piece that will make your body truly sing.

**GRISHKO®. WHERE QUALITY RHYMES WITH CHIC.**





MESH SEAMED CONVERTIBLE TIGHTS

Exclusive knit tights. Real back seam.  
Comfortable under arch opening.  
Microfiber waistband.

0054/0

Size: S, M, L  
90% nylon, 10% spandex.  
● Ballet Pink

Age/Size	4-6	6-8	8-10	10-12	S	M	L	XL
Tight size	0000	000	00	0	1	2	3	4



PROFESSIONAL FISHNETS FULL FOOT

Full foot professional fishnet tights.  
Foot bed is soft and comfortable.  
The knit is long lasting and strong.

Made in Italy.

0065

Size: 1-2, 2-3, 3-4  
82% microfiber, 18% elastane.  
● Light Toast ● Black ● Brown

Age/Size	4-6	6-8	8-10	10-12	S	M	L	XL
Tight size	0000	000	00	0	1	2	3	4



CONVERTIBLE MICROFIBER TIGHTS

Microfiber convertible tights. Comfortable  
generous opening under the arch.  
Microfiber Knit-in waistband.  
Made in Italy with highest quality threads  
and elastane.

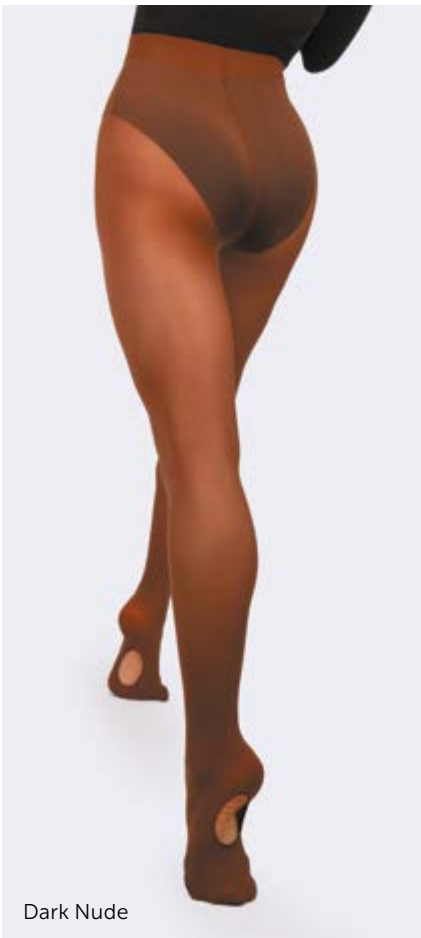
L2

Adult size: 1, 2, 3, 4  
82% microfiber, 18% elastane.  
Made in EU.  
● Skin ○ White ● Black

0050/0

Youth size: 000, 00, 0  
Adult size: 1, 2, 3, 4  
90% polyamide, 10% lycra.  
Made in Italy.  
● Light Pink ○ White ● Black  
● Theatrical Pink ● Light Toast  
● Classic Light Toast ● Dark Nude (Coffee)

Age/Size	4-6	6-8	8-10	10-12	S	M	L	XL
Tight size	0000	000	00	0	1	2	3	4



FOOTED MICROFIBER TIGHTS

Microfiber footed tights.  
Microfiber Knit-in waistband.  
Made in Italy with highest quality threads  
and elastane.

L1

Youth size: 00, 0, 1  
Adult size: 2, 3, 4  
82% microfiber, 18% elastane.  
Made in EU.  
● Skin ○ White ● Black

0050

Youth size: 000, 00, 0  
Adult size: 0, 1, 2, 3, 4  
90% polyamide, 10% lycra.  
Made in Italy.  
● Light Pink ○ White ● Black  
● Theatrical Pink ● Light Toast  
● Classic Light Toast ● Dark Nude (Coffee)

Age/Size	4-6	6-8	8-10	10-12	S	M	L	XL
Tight size	0000	000	00	0	1	2	3	4







# SKIRTS. ALL COLLECTIONS

GRISHKO® skirts are a breath of wind that flows around a dancer's silhouette giving her movements even more grace.

We make them in a huge variety of colors from the more tender ice-blue and lilac to sophisticated coffee and olive.

Microfiber or mesh, pull-on or wrap — whatever style you choose, GRISHKO® skirts give you a perfect and elegant look.





Oksana

Pull-on skirt

This classic high-low skirt made out of color matching microfiber has a narrow elastic waistband.

Youth sizes

DAD3012M Little Oksana

Sizing by age	10–11 Y	12–13 Y
Size RU	36	38

Adult sizes

DA3012M Oksana

International size	XXS	XS	S	M	L	XL
Size RU	40	42	44	46	48	50

Material:  
80% polyamide micro, 20% elastane.

Color:

- Black

● Medium Taupe

● Midnight Sky
- Roulette

● Ramo

● Alchemy
- Lilac

● Coffee

● Olive



Orka

Mesh skirt

This lovely pull-on skirt is higher on the sides and longer in the front and back.

Youth sizes

DAD3013 Little Orka

Sizing by age	10–11 Y	12–13 Y
Size RU	36	38

Adult sizes

DA3013 Orka

International size	XXS	XS	S	M	L	XL
Size RU	40	42	44	46	48	50

Material:  
80% polyamide micro, 20% elastane.

Color:

- Black

● Lilac

● Medium Taupe



Olema

Pull-on skirt

Classic pull-on skirt in matching fashion flower print.

Youth sizes

DAD3012/1M Little Olema

Sizing by age	10–11 Y	12–13 Y
Size RU	36	38

Adult sizes

DA3012/1M Olema

International size	XXS	XS	S	M	L	XL
Size RU	40	42	44	46	48	50

Material:  
80% polyester, 20% elastane.

Color:

- Camellia



Calyssa

Folk and character skirt

Long two-layer skirt of mesh with tulle underneath was made by order of Vaganova Academy for character and folk dance. Wide elastic belt can be fixed on waist or hips and airy mesh allows the dancer to feel free during any movements.



Youth sizes

DAD1478MP Little Calyssa

Sizing by age	8–9 Y	9–10 Y	10–11 Y	12–13 Y
Size RU	32	34	36	38

Adult sizes

DA1478MP Calyssa

International size	XXS	XS	S	M	L	XL
Size RU	40	42	44	46	48	50

Material: 93% polyamide, 7% elastane.  
Size: 8–9 Y — 35 cm, Size: 9–10 Y — 40 cm,  
Size: 11–13 Y — 45 cm, Size: XXS — 50 cm,  
Size: XS–XL — 55 cm

Color:

- White

● Royal Blue

● Light Blue

● Pink

● Coffee

● Ice Blue

● Lilac

● Black

● Medium Taupe

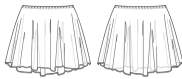




Echo

Mesh skirt

A new take on an old favorite, Italian four-way stretch mesh pull-on skirt. Hemless skirt is made for an easy length adjustment. Longer on back for a classic line.



Youth sizes

DAD2005 Little Echo

Sizing by age	5-6Y	6-7Y	8-9Y	9-10Y	10-11Y	12-13Y
Size RU	28	30	32	34	36	38

Adult sizes

DA2005 Echo

International size	XXS	XS	S	M	L	XL
Size RU		40	42	44	46	48 50

Material: 93% polyamide, 7% elastane.

Color:

- Ice Blue

● Light Blue

● French Blue

● Bordeaux

● Coffee

● Dark Grey
- Light Navy

● Royal Blue

● Lavender

● Olive

● Tiffany

● Medium Taupe
- Lilac

● Pink

● Red

● Black

● White



Lilac

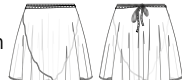


Lavender

Eden

Mesh skirt with ties

A classic wrap skirt with stretch waistband, length can be adjusted on any size due to no hem edging. High quality Italian stretch mesh will not run when cut.



Youth sizes

DAD2006 Little Eden

Sizing by age	5-6Y	6-7Y	8-9Y	9-10Y	10-11Y	12-13Y
Size RU	28	30	32	34	36	38

Adult sizes

DA2006 Eden

International size	XXS	XS	S	M	L	XL
Size RU		40	42	44	46	48 50

Material: 93% polyamide, 7% elastane.

Color:

- Ice Blue

● Light Blue

● French Blue

● Bordeaux

● Coffee

● Dark Grey
- Light Navy

● Royal Blue

● Lavender

● Olive

● Tiffany

● Medium Taupe
- Lilac

● Pink

● Red

● Black

● White



Royal Blue



Coffee

Celine

Mesh skirt

Short mesh skirt with wide elastic belt to underline the waist — very popular mock wrap design loved by dancers all over.



Youth sizes

DAD1945MP Little Celine

Sizing by age	8-9 Y	9-10 Y	10-11 Y	12-13 Y
Size RU	32	34	36	38

Adult sizes

DA1945MP Celine

International size	XXS	XS	S	M	L	XL
Size RU		40	42	44	46	48 50

Material: Belt: 80% polyamide micro, 20% elastane.,

Skirt: 93% polyamide, 7% elastane.

Length: 33 cm

Color:

- Pink

● Red

● Lilac

● Ice Blue
- Olive

● Coffee

● Black

● Medium Taupe
- Royal Blue

● White

● Light Navy

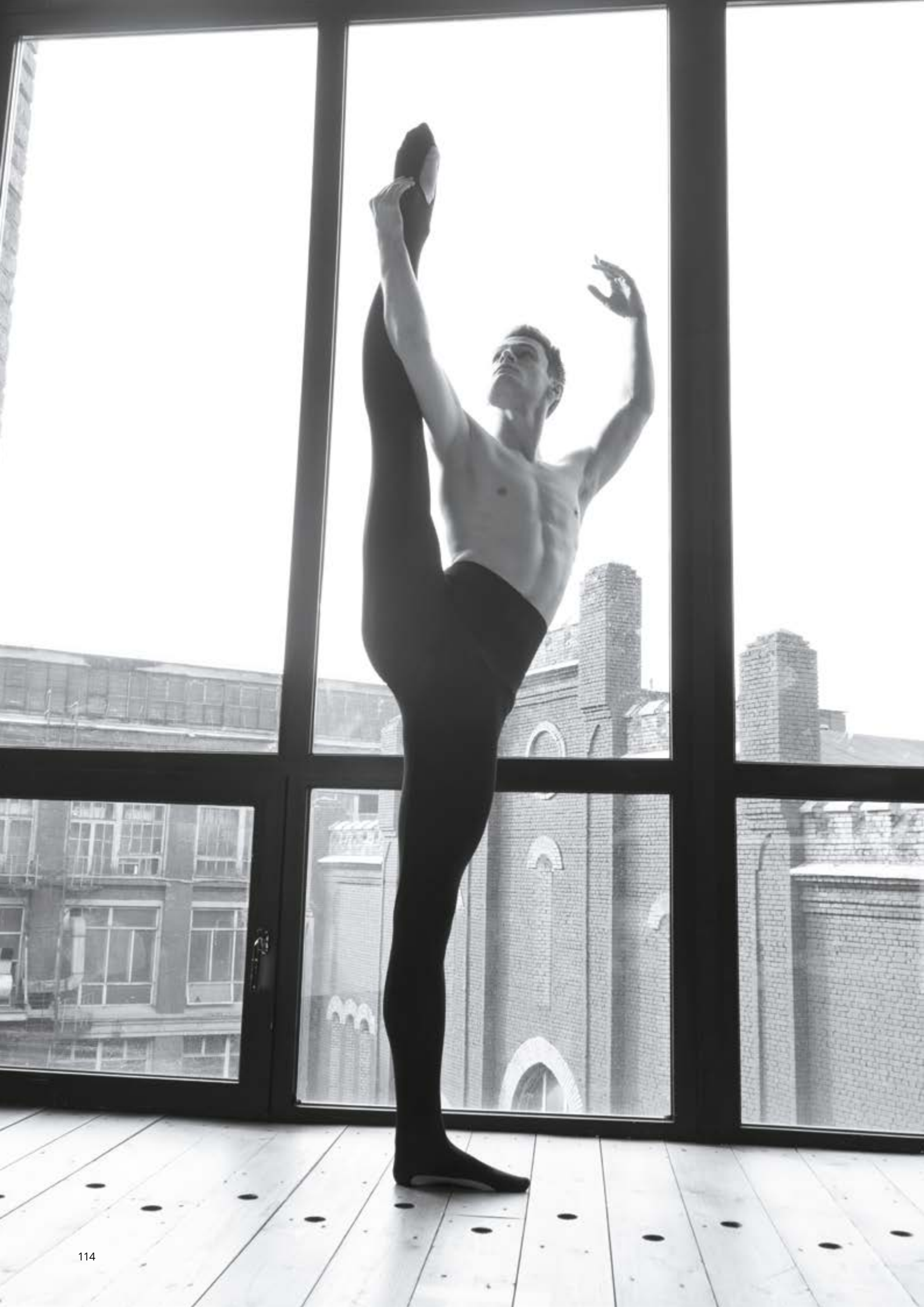


Medium Taupe



Black





# MEN'S GARMENTS

In a field dominated by the fairer sex, the male market is often overlooked.

We intend to set the record straight — and give our retailers a unique opportunity to capture this promising niche.

Our collection of men's garments covers all the basic items that male artists need from leggings to bodysuits and underwear.

Strong sweat-wicking qualities give you all-day comfort; highly stretchy fabrics guarantee free range of motion; all garments are designed to hold up to vigorous movement and frequent use thanks to durable fabrics, strong threads and stitches.

As more boys join the art of ballet, don't miss out on the trend with the GRISHKO® men's collection.

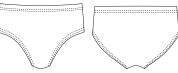




# Little Carson

Trunks

Boy's trunk. Made in the greatest tradition of Russian ballet uniform for boys.



DAD1495C Little Carson

Sizing by age	5-6Y	6-7Y	8-9Y	9-10Y	10-11Y	12-13Y
Size RU	28	30	32	34	36	38

Material:  
90% cotton, 10% elastane.

Color:

● Black

DAD1495M Little Carson

Sizing by age	5-6Y	6-7Y	8-9Y	9-10Y	10-11Y	12-13Y
Size RU	28	30	32	34	36	38

Material:  
80% polyamide micro, 20% elastane.

Color:

● Black

● Dark Grey



Dark Grey



Black

# Little Caden

Bodysuit

Boy's bodysuit, tank top and trunk attached. Made of stretch cotton comfortable and universal for uniforming.



DAD109C Little Caden

Sizing by age	5-6Y	6-7Y	8-9Y	9-10Y	10-11Y	12-13Y
Size RU	28	30	32	34	36	38

Material:  
90% cotton, 10% elastane.

Color:

● White/Black



White/Black

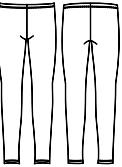


White/Black

# Caleb

Leggings

Boy's and Men's footless tights. Comfortable microfiber. featuring high waist and secure waist elastic.



Youth sizes

DAD1497M Little Caleb

Sizing by age	10-11Y	12-13Y
Size RU	36	38

Adult sizes

DA1497M Caleb

Int. size	XXS	XS	S		M		L		XL
Size RU	40	42	40	42	44	46	48	50	52

Material:  
80% polyamide micro, 20% elastane.

Color:

● Black

● Dark Grey

● Dark Blue



Dark Blue

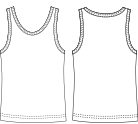


Dark Grey

# Little Chase

Tank top

Boy's tank top. Made in the greatest tradition of Russian ballet uniform for boys.



DAD1494C Little Chase

Sizing by age	5-6Y	6-7Y	8-9Y	9-10Y	10-11Y	12-13Y
Size RU	28	30	32	34	36	38

Material:  
90% cotton, 10% elastane.

Color:

○ White



White



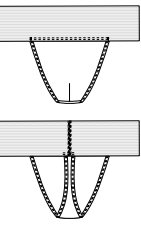
White



# Evan

Men’s dance belt

Men’s dancebelt at its best. Sufficient padding, comfortable elastic and perfect shape.



## DA2007C Evan

Int. size	XXS	XS	S		M		L		XL
Size RU	40	42	40	42	44	46	48	50	52

Material:  
90% cotton, 10% elastane.

Color:  
● Pale Beige



Pale Beige



Pale Beige

# Eric

Leggings

Men’s convertible microfiber tights. A unique pattern follows the dancers body perfectly. Convertible foot opening is comfortable and easy to wear.



## DA2008M Eric

Int. size	XXS	XS	S		M		L		XL
Size RU	40	42	40	42	44	46	48	50	52

Material:  
80% polyamide micro, 20% elastane.

Color:  
● Dark Grey  
● Black  
○ White



Dark Grey



Black

# Cadin

Bodysuit

Front bottom lined men’s short sleeve crew neck bodysuit. Featuring comfortable flat snaps under crotch for easy change.



## Youth sizes DAD1480C Little Cadin

Sizing by age EU	10-11Y	12-13Y
Size RU	36	38

## Adult sizes DA1480C Cadin

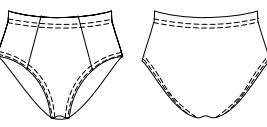
Int. size	XXS	XS	S		M		L		XL
Size RU	40	42	40	42	44	46	48	50	52

Material:  
90% cotton, 10% elastane.

Color:  
○ White

## BOY’S BRIEFS

Boy’s briefs, full seat dance belt. Made in Russian tradition of classic uniform style.



## DAD05C

Sizing by age	5-6Y	6-7Y	8-9Y	9-10Y	10-11Y	12-13Y
Size RU	28	30	32	34	36	38

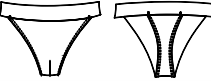
Material:  
90% cotton, 10% elastane.

Color:  
● Black

# Cooper

Men’s Dance Belt

Men’s supportive dance belt. Seamless under tights. Comfortable and soft.



## DA1496C Cooper

Int. size	XXS	XS	S		M		L		XL
Size RU	40	42	40	42	44	46	48	50	52

Material:  
90% cotton, 10% elastane.

Color:  
● Pale Beige



# CATALOGUE GUIDE

GRISHKO® boasts a vast range of products that will help you capture the market in its entirety — from beginners to accomplished artists, from ballet moms to dance teachers and ballet schools.

Here is our guide to GRISHKO® major product groups that will enable you to cater to different clients:

## LUXURY BASIC

Ballet basics of premium quality at affordable prices. Made from upscale Italian fabrics and perfect for everyday use: they do not lose shape or fade after multiple washings, are designed to withstand vigorous training and will serve your clients for a long time. Includes two collections:

### CLASSIC EXCELLENCE

Best uniform range on the market. Leotards come in 17 different colors and 15 different silhouettes — from classical to modern. Highly popular with students of ballet and dance schools.

### GRISHKO® ACADEMY

A refined uniform collection that helps ballet teachers foster school spirit and make true legends out of their disciples — literally. This collection is used in such world-renowned schools of ballet as The Bolshoi Ballet Academy and Vaganova Academy of Russian Ballet.

## FASHION

Class and perfection for everyday ballet wear. Leotards that belong on the runway — but will help you shine in the ballroom. Sophisticated silhouettes, rich details and a variety of models to cater to any taste.

### BOLSHOI STARS

Exquisite designs and unmatched elegance — for artists born to be in the spotlight. Upmarket collection inspired by the stars of the Bolshoi Theatre.

### BLACK LABEL

Limited edition that turns ballet fashion into its own art. Avant-garde designs are based on paintings by world-famous artists such as Gustav Klimt. This collection will be loved by bold, daring artists not afraid to stand out from the crowd.

# HOW WE HELP RETAILERS BOOST SALES

When our retailers prosper, we prosper, too. That is why we have a wide range of marketing tools to help you sell our products.



### MEDIA MATERIALS AND DESIGN

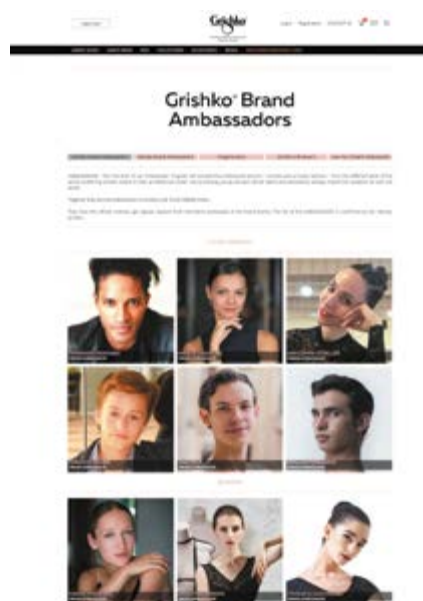
We provide retailers with high-resolution photos of our products that you can use in store or online. We can also create designs for your stand, brochures and other promotional materials that feature our products on request. Contact your international brand manager or your sales representative to discuss if you need any promo materials.



### PARTNER SCHOOLS

We are a retailer-centric company, therefore we created a program uniting ballet schools, retailers, and an amazing quality of handmade in Russia products. For consideration into the Partner School Program, please contact your personal manager.





## AMBASSADORS

To better promote GRISHKO® products, you can rely on the strong brand image we built both on social media and in the professional world of ballet with the help of our ambassadors.



### GRISHKO® Brand Ambassadors

are the first level of our Ambassador Program. We engage professional ballet artists — soloists and principal dancers — as well as promising young talents who inspire hundreds of thousands of ballet lovers all over the world.

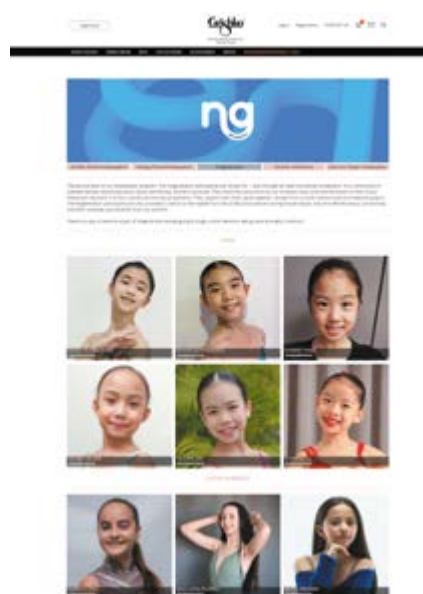
Our Brand Ambassadors are true icons of dance, winners of most prestigious ballet contests who have both impeccable ballet technique and strong media presence. Together, they promote the GRISHKO® brand and embody our motto — LIVE YOUR DREAM.

They have an official contract, get regular support from the brand, and participate in the brand events.



**GRISHKO® Market Influencers** are the second level of our Ambassador program designed specifically to boost online presence of GRISHKO® partners retailers. Each store can choose their own influencer to promote them — and we will provide them with a welcome package and 1 pair of pointe shoes monthly.

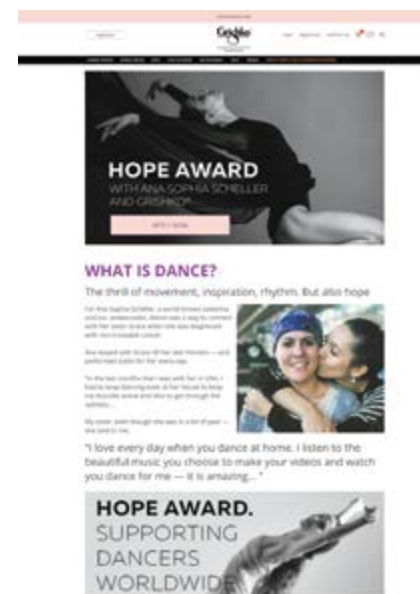
GRISHKO® Influencers create engaging content for your store, and we regularly feature both your influencer and your store on our social media accounts — so you can reach an audience of more than 180 000 loyal GRISHKO® / NIKOLAY® customers. Each retailer has its own terms of applying to the program.



**NGgeneration** is the third level of our Ambassador program. The NGgeneration participants are aspiring dancers chosen for 1 year through an open worldwide competition.

It's a community of talented ballet artists passionate about dance and Nikolay Grishko's products. They share the same vision as our company does, promote the brand on their Social Media and represent it at their schools and during competitions.

They support each other, grow together, and receive both material and non-material support from GRISHKO®. The NGgeneration participants are also provided a chance to learn ballet from the professional dancers during masterclasses, they are offered various scholarships and other amazing opportunities from our partners.

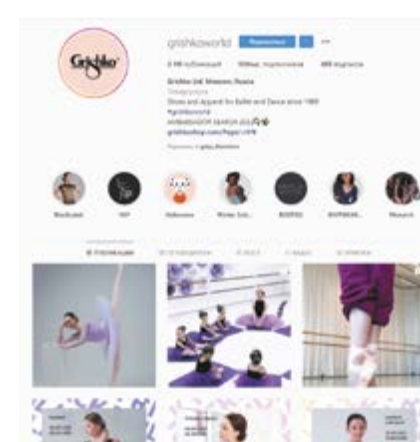


## HOPE

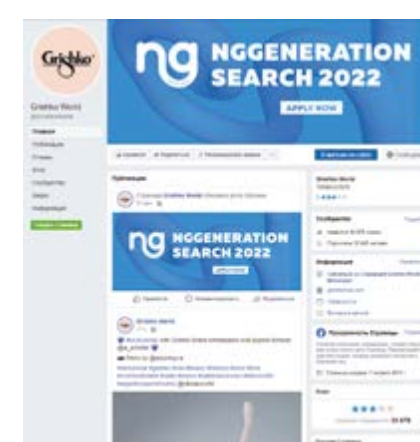
A soon-to-be-launched charity campaign designed to support dancers in need. We will choose three dancers who overcame their struggles through the power of art. They will receive GRISHKO® products and personal mentorship from our brand ambassador Ana Sophia Scheller.

The campaign will feature special merchandise — hoodies, badges, etc. and will be promoted online and in partners' stores. The project will help you enhance your store image as a socially aware business that helps dancers worldwide live their dream — with GRISHKO®.

@grishkoworld is great opportunity to feature your store and share all the news regarding new arrivals and in-store events announcements.



 grishkoworld



 grishko world





# COLORS OF FABRICS

## POLYAMIDE MICRO

80% polyamide micro, 20% elastane

LEOTARDS / SKIRTS / LEGGINGS / TRUNKS

					
White #1	Royal Blue #3	Black #4	Light Navy #5	Lavender #8	Pink #9
					
Red #10	Ice Blue #12	Dark Blue #16	Light Blue #18	Coffee #28	Lilac #30
					
Dark Grey #31	French Blue #34	Bordeaux #35	Medium Taupe #42	Tiffany #43	
					
Olive #44	Midnight Sky #47	Alchemy #48	Roulette #58	Ramo #59	

## COTTON

90% cotton, 10% elastane

TRUNKS / BODYSUITS / TANK TOPS / BRIEFS / DANCE BELTS

		
White	Pale Beige	Black

## BASIC MESH

93% polyamide, 7% elastane

SKIRTS / LEOTARDS

					
White	Royal Blue	Black	Light Navy	Lavender	Pink
					
Red	Ice Blue	Dark Blue	Light Blue	Coffee	Lilac
					
French Blue	Bordeaux	Medium Taupe	Olive		

## POLYESTER

100% polyester

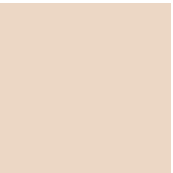

HEAT RETENTION WEAR

					
Ice Blue	Orchid Mist	Dusty Pink	Grey	Blue	Bordeaux
					
Black					

## MICROFIBER

86% polyamide, 14% elastane

UNDERGARMENTS

	
Nude	Black



## GRISHKO® APPAREL SIZE CORRESPONDENCE CHART

ADULT SIZES / LADIES							
Height, cm	158	164	168–170	168–172	168–172	168–172	168–172
Bust Circumference, cm	77–80	81–84	85–88	89–92	93–96	97–100	101–104
Waist Circumference, cm	61–62	63–64	65–68	69–71	72–74	75–77	78–81
Hip Circumference, cm	86–89	90–92	93–96	97–100	101–104	105–108	109–112
International size	XXS	XS	S	M	L	XL	2XL
Size RU	40	42	44	46	48	50	52
Size EU	34	36	38	40	42	44	46
Size IT	38	40	42	44	46	48	50
Size FR	36	38	40	42	44	46	48
Size DE	32/34	36	38	40	42	44	46
Size USA	4	6	8	10	12	14	16
Size UK	8	10	12	14	16	18	20
Size JP	7	9	11	13	15	17	19
Size CH	155/80A	160/84A	165/88A	170/92A	175/96A	180/100A	185/104A

YOUTH SIZES / GIRLS							
Height, cm	110	116–122	128	134	140	146	152
Bust Circumference, cm	52	56	57–60	61–64	65–68	69–72	73–76
Waist Circumference, cm	51	52	53–54	55–57	58–59	60	61
Hip Circumference, cm	60	63	64–68	69–72	73–77	78–81	82–85
Sizing by age EU	3–4 Y	4–5 Y	6–7 Y	8–9 Y	9–10 Y	10–11 Y	12–13 Y
Size RU	26	28	30	32	34	36	38
Size EU	110–116	116–122	122–128	128–134	134–140	140–146	146–152

## GRISHKO® APPAREL SIZE CORRESPONDENCE CHART

ADULT SIZES / MEN								
Height, cm	164–170		170–176		176–182		182–188	
Bust Circumference, cm	77–80	81–84	85–88	89–92	93–96	97–100	101–104	105–108
Waist Circumference, cm	65–66	67–68	69–70	71–74	75–78	79–82	83–86	87–90
Hip Circumference, cm	82–85	86–88	89–91	92–94	95–97	98–100	101–103	104–106
International size	S		M		L		XL	XXL
Size RU	40	42	44	46	48	50	52	54
Size EU	40	42	44	46	48	50	52	54

YOUTH SIZES / BOYS						
Height, cm	116–122	128	134	140	146	152
Bust Circumference, cm	56	57–60	61–64	65–68	69–72	73–76
Waist Circumference, cm	52	53–54	55–57	58–60	61–63	64–65
Hip Circumference, cm	61	62–65	66–69	70–73	74–77	78–85
Sizing by age EU	4–5 Y	6–7 Y	8–9 Y	9–10 Y	10–11 Y	12–13 Y
Size RU	28	30	32	34	36	38
Size EU	116–122	122–128	128–134	134–140	140–146	146–152



## **GRISHKO® HEAD OFFICE**

Proezd Zavoda Serp i Molot, 2/4  
Moscow, 111250, Russia  
+7 (495) 980 91 10  
export@grishko.ru

## **GRISHKO® DISTRIBUTION CENTER**

Grishko Dance s.r.o.  
Jiřího ze Vtelna 1731 (Areal Pragorent)  
193 00 Praha 9 – Horní počernice  
+ 420 727 933 480  
export@grishko.eu



grishko-world.com



grishkoshop.com



grishkoworld



grishkoworld