

# Nikolay®

Proudly made by Grishko Ltd.  
Moscow, Russia

## 2021 GARMENTS





# CONCENTRATE ON THE MAIN THING

WE CAREFULLY CONTROL OUR  
PRODUCTION TO MAKE YOUR  
GARMENT FEEL LIKE SECOND SKIN –  
BECAUSE WHEN BODY FEELS  
COMFORT, YOU CAN CONCENTRATE  
ON THE MAIN THING – DANCE.



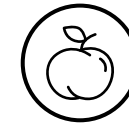
## THE BEST ITALIAN POLYAMIDE MICRO ONLY

The supplier of the fabrics we use has a certificate, approving its quality.  
**STANDARD 100** by **OEKO-TEX®** is one of the world's best-known labels for textiles tested for harmful substances. It stands for customer confidence and high product safety.  
If a textile article carries the **STANDARD 100** label, you can be certain that every thread has been tested for harmful substances and that the article, therefore, is harmless for human health.

## MATERIAL FEATURES OF NIKOLAY® LEOTARDS



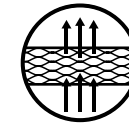
We source the best existing high-tech and soft materials available for sportswear that guarantee comfort during any movements.



Super soft like a peach brushed microfiber makes our garments feel like second skin.



UPF 50+ allows one to wear the garment during outdoor classes without worry.



Polyamide micro – hi-tech breathable material.



Special bi-stretch technology helps you to feel free during stretching and active exercises.



Easily absorbs moisture and looks good even when it's a bit damp.



Keeps its form and doesn't lose shape after multiple washings.



Fast-drying and breathable, thus extremely comfortable.

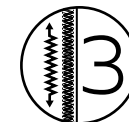


Fade resistant. Colors remain bright after a large number of washes.

## BEIGE LINING

We use beige lining in our leotards, that gives girls confidence that nothing is visible under the garment.

## CAREFUL PRODUCTION FOR YOUR CONFIDENCE



We use three different types of thread to answer stretching properties of the materials.



We pay attention to the end of each seam by securing it. This guarantees longer lifespan for your garment.





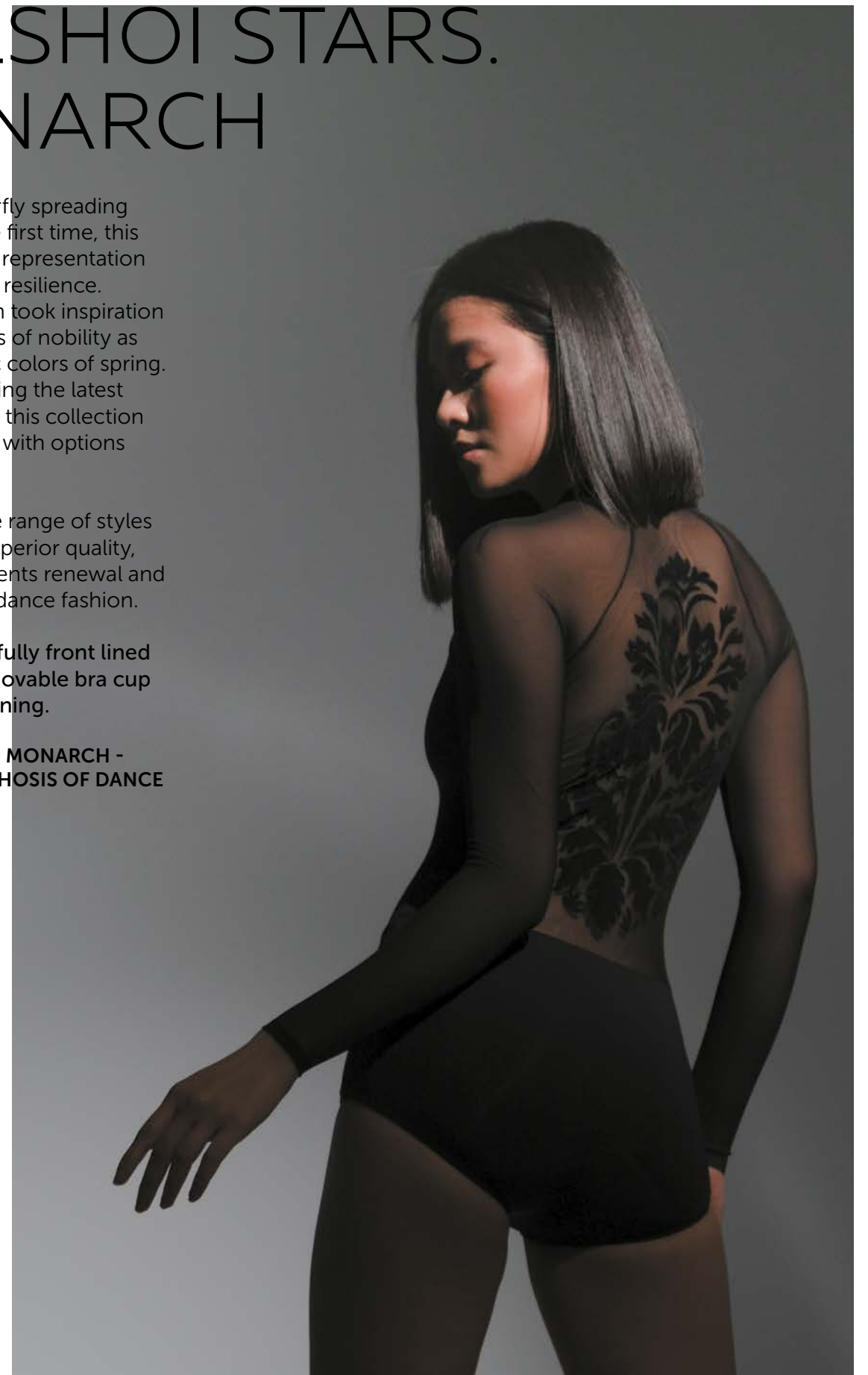
# BOLSHOI STARS. MONARCH

Just like a butterfly spreading its wings for the first time, this collection is the representation of creativity and resilience. Our design team took inspiration from jewel tones of nobility as well as romantic colors of spring. Hand crafted using the latest Italian materials, this collection will provide you with options unsurpassed.

Featuring a wide range of styles and details of superior quality, Monarch represents renewal and rejuvenation of dance fashion.

All leotards are fully front lined and feature removable bra cup pockets in the lining.

**BOLSHOI STARS. MONARCH -  
THE METAMORPHOSIS OF DANCE  
CONTINUES.**

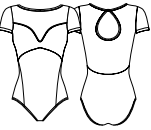




# Farrah

Cap sleeve leotard

Plunge bust detail is carried by the flocked mesh overlay. Empire waistline accentuated by the elegant princess seams. Beautiful mid-open back with a keyhole detail. Secure neck closure. Gorgeous lines, very elegant and flattering.



## YOUTH SIZES

**DAD2016MPN Little Farrah**

Size: 10-11 Y, 12-13 Y

## ADULT SIZES

**DA2016MPN Farrah**

Size: XXS, XS, S, M, L, XL

Material: 80% polyamide micro, 20% elastane.

Fully front lined with removable bra cup pockets in the lining.

Color:

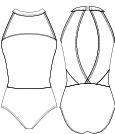
● Black



# Fallon

Tank style leotard

A look worthy of royalty, high neck ballet leg cut leotard made with the latest Italian materials, featuring flocked mesh and microfiber. Clip closure on back of the neck. Criss-cross mesh detail on dramatic open lower back.



## YOUTH SIZES

**DAD2015MPN Little Fallon**

Size: 10-11 Y, 12-13 Y

## ADULT SIZES

**DA2015MPN Fallon**

Size: XXS, XS, S, M, L, XL

Material: 80% polyamide micro, 20% elastane.

Fully front lined with removable bra cup pockets in the lining.

Color:

● Black



# Fabianna

Long sleeve leotard

Long sleeve deep front V-bust leotard. Featuring Italian flocked mesh and microfiber. Dome-empire waistline is flattering and comfortable. Mid-open back with neck closure. Long sleeve is not edged for comfort and ability to adjust.



## YOUTH SIZES

**DAD2017MPN Little Fabianna**

Size: 10-11 Y, 12-13 Y

## ADULT SIZES

**DA2017MPN Fabianna**

Size: XXS, XS, S, M, L, XL

Material: 80% polyamide micro, 20% elastane.

Fully front lined with removable bra cup pockets in the lining.

Color:

● Black







Fiona  
Leotard

## Fiona

Cap sleeve leotard

Marvelous flocked mesh design with low back and forced sweetheart neckline. Cap sleeve leotard that grabs attention and creates an illusion of a tattoo back. Comfortable non-edged sleeves.



### YOUTH SIZES

**DAD2018MPN Little Fiona**

Size: 10-11 Y, 12-13 Y

### ADULT SIZES

**DA2018MPN Fiona**

Size: XXS, XS, S, M, L, XL

Material: 80% polyamide micro, 20% elastane.

Fully front lined with removable bra cup pockets in the lining.

Color:

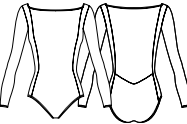
- Black/Pale Beige mesh
- Black/Black mesh



## Filipa

Long sleeve leotard

Elegant flocked mesh with low back and square neckline. Long sleeve leotard that grabs attention and creates an illusion of a tattoo back. Flattering princess seams.



### YOUTH SIZES

**DAD2019MPN Little Filipa**

Size: 10-11 Y, 12-13 Y

### ADULT SIZES

**DA2019MPN Filipa**

Size: XXS, XS, S, M, L, XL

Material: 80% polyamide micro, 20% elastane.

Fully front lined with removable bra cup pockets in the lining.

Color:

- Black/Pale Beige mesh
- Black/Black mesh

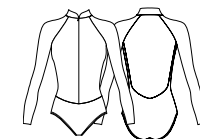




## Fiala

Long sleeve leotard

Fiala is a gorgeous long sleeve leotard with tattoo-like flocking detail on four-way stretch mesh. Plunge open back and high regal neckline. Lowered waistline is flattering and comfortable. Secure and soft front zipper. Raw edge sleeves.



### YOUTH SIZES

**DAD2020MPN Little Fiala**

Size: 10-11 Y, 12-13 Y

### ADULT SIZES

**DA2020MPN Fiala**

Size: XXS, XS, S, M, L, XL

Material: 80% polyamide micro, 20% elastane.

Fully front lined with removable bra cup pockets in the lining.

Color:

● Black



## Firesse

Long sleeve leotard

Fashion biketard with regal high neck, front zip and open mesh back with tattoo detailing flocked on four-way stretch mesh. Raw edge sleeves.



### YOUTH SIZES

**DAD2020/1MPN Little Firesse**

Size: 10-11 Y, 12-13 Y

### ADULT SIZES

**DA2020/1MPN Firesse**

Size: XXS, XS, S, M, L, XL

Material: 80% polyamide micro, 20% elastane.

Fully front lined with removable bra cup pockets in the lining.

Color:

● Black

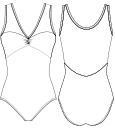




# Jamie

Tank style leotard

Beautiful V-front with classic pinch and plunge V-back detailed leotard with flocked mesh and empire waistline. Classic tank style with a twist.



YOUTH SIZES

DAD2039MPN Little Jamie

Size: 10-11 Y, 12-13 Y

ADULT SIZES

DA2039MPN Jamie

Size: XXS, XS, S, M, L, XL

Material: 80% polyamide micro, 20% elastane.

Fully front lined with removable bra cup pockets in the lining.

Color:

- Black/Alchemy
- Black/Giza
- Black/Powder Blue



# Jennifer

Camisole leotard

Camisole leotard with mesh overlay detail and flocked butterfly print on back. Empire waistline and straight across upper back line. Adjustable camisole straps. Plunge mid V-back line.



YOUTH SIZES

DAD2040MPN Little Jennifer

Size: 10-11 Y, 12-13 Y

ADULT SIZES

DA2040MPN Jennifer

Size: XXS, XS, S, M, L, XL

Material: 80% polyamide micro, 20% elastane.

Fully front lined with removable bra cup pockets in the lining.

Color:

- Powder Blue
- Alchemy
- Giza
- Black



Jamie  
Leotard





# Lesley

Tank style leotard

Embossed butterfly print is featured on this gorgeous tank style leotard. Flattering pattern, open mid back and clip closure.



**YOUTH SIZES**

**DAD2021MPN Little Lesley**

Size: 10-11 Y, 12-13 Y

**ADULT SIZES**

**DA2021MPN Lesley**

Size: XXS, XS, S, M, L, XL

Material: 80% polyamide micro, 20% elastane.

Fully front lined with removable bra cup pockets in the lining.

Color:

● Black



# Leela

Cap sleeve leotard

Cap sleeve leotard with embossed butterfly print detail under the scoop neck bust line. Open low back. Scoop neck, raw mesh sleeves.



**YOUTH SIZES**

**DAD2022MPN Little Leela**

Size: 10-11 Y, 12-13 Y

**ADULT SIZES**

**DA2022MPN Leela**

Size: XXS, XS, S, M, L, XL

Material: 80% polyamide micro, 20% elastane.

Fully front lined with removable bra cup pockets in the lining.

Color:

● Black



Lesley  
Leotard

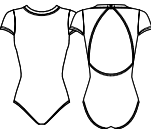




# Leanne

Cap sleeve leotard

A gorgeous cap sleeve leotard featuring an exclusive butterfly print. Ballet leg cut and clean pattern. Secure closure on back of the neck. Mid-back opening.



**YOUTH SIZES**  
**DAD2023MPN Little Leanne**  
Size: 10-11 Y, 12-13 Y

**ADULT SIZES**  
**DA2023MPN Leanne**  
Size: XXS, XS, S, M, L, XL  
Material: 80% polyamide micro, 20% elastane.  
Fully front lined with removable bra cup pockets in the lining.  
Color:  
● Illusion  
● Survivor  
● Black



# Gem

Camisole leotard

Tank style leotard with ballet leg line. Featuring Italian silky velour edging and straps. Semi-sweetheart neckline. Open back.



**YOUTH SIZES**  
**DAD2024MPN Little Gem**  
Size: 10-11 Y, 12-13 Y

**ADULT SIZES**  
**DA2024MPN Gem**  
Size: XXS, XS, S, M, L, XL  
Material: 80% polyamide micro, 20% elastane.  
Fully front lined with removable bra cup pockets in the lining.  
Color:  
● Alchemy  
● Midnight Sky  
● Black



# Julie

Tank style leotard

Straight bust line tank style leotard with flocked mesh butterfly print. Mid back. A classic piece with small fashion detail.



**YOUTH SIZES**  
**DAD2038MPN Little Julie**  
Size: 10-11 Y, 12-13 Y

**ADULT SIZES**  
**DA2038MPN Julie**  
Size: XXS, XS, S, M, L, XL  
Material: 80% polyamide micro, 20% elastane.  
Fully front lined with removable bra cup pockets in the lining.  
Color:  
● Black



# Giada

Tank style leotard

Bateau neck tank leotard with flattering princess seams and Italian silky velour de-tail. Classic lines with a modern twist.



**YOUTH SIZES**  
**DAD2025MPN Little Giada**  
Size: 10-11 Y, 12-13 Y

**ADULT SIZES**  
**DA2025MPN Giada**  
Size: XXS, XS, S, M, L, XL  
Material: 80% polyamide micro, 20% elastane.  
Fully front lined with removable bra cup pockets in the lining.  
Color:  
● Alchemy  
● Midnight Sky  
● Black





# Grace

Cap sleeve leotard

A beautiful mesh cap sleeve leotard with illusion neckline and low back. Deep bust line accentuates the neckline. Raw sleeves are comfortable and adjustable.



**YOUTH SIZES**  
**DAD2026MPN Little Grace**  
Size: 10-11 Y, 12-13 Y

**ADULT SIZES**  
**DA2026MPN Grace**  
Size: XXS, XS, S, M, L, XL  
Material: 80% polyamide micro, 20% elastane.  
Fully front lined with removable bra cup pockets in the lining.  
Color:

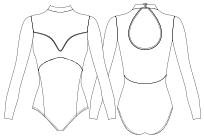
- Alchemy
- Midnight Sky
- Black



# Glenda

Long sleeve leotard

High neck long sleeve leotard with neck clip closure. Mesh back, large keyhole opening on upper back. Illusion neckline with four-way stretch mesh. Elegant princess seams. Raw sleeve edge.



**YOUTH SIZES**  
**DAD2027MPN Little Glenda**  
Size: 10-11 Y, 12-13 Y

**ADULT SIZES**  
**DA2027MPN Glenda**  
Size: XXS, XS, S, M, L, XL  
Material: 80% polyamide micro, 20% elastane.  
Fully front lined with removable bra cup pockets in the lining.  
Color:

- Alchemy
- Midnight Sky
- Black



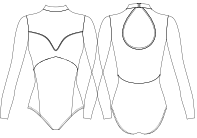
Glenda  
Leotard



# Gabi

Long sleeve leotard

Long sleeve high neck leotard with illusion bust line. Velour and flocked mesh detail. Low back, high keyhole opening. back of the neck closure. Raw sleeve edge.



**YOUTH SIZES**  
**DAD2027/1MPN Little Gabi**  
Size: 10-11 Y, 12-13 Y

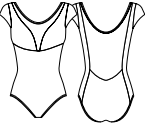
**ADULT SIZES**  
**DA2027/1MPN Gabi**  
Size: XXS, XS, S, M, L, XL  
Material: 80% polyamide micro, 20% elastane.  
Fully front lined with removable bra cup pockets in the lining.  
Color:  
● Alchemy  
● Midnight Sky  
● Black



# Gillian

Cap sleeve leotard

Mesh cap sleeve leotard with classic illusion bust detail and plunge neckline. Low back with mesh. Italian flocked mesh is comfortable and fashionable. Slight V lower back.



**YOUTH SIZES**  
**DAD2026/1MPN Little Gillian**  
Size: 10-11 Y, 12-13 Y

**ADULT SIZES**  
**DA2026/1MPN Gillian**  
Size: XXS, XS, S, M, L, XL  
Material: 80% polyamide micro, 20% elastane.  
Fully front lined with removable bra cup pockets in the lining.  
Color:  
● Alchemy  
● Midnight Sky  
● Black



Gillian  
Leotard



# Helena

Leotard

## Helena

Leotard

3D flocked mesh with Italian microfiber create this masterpiece with high neck mesh detail and straight bust line. Open criss-cross back, flattering and modest waist pattern. Bust is stitched through mesh.



### YOUTH SIZES

**DAD2028MPN Little Helena**

Size: 10-11 Y, 12-13 Y

### ADULT SIZES

**DA2028MPN Helena**

Size: XXS, XS, S, M, L, XL

Material: 80% polyamide micro, 20% elastane.

Fully front lined with removable bra cup pockets in the lining.

Color:

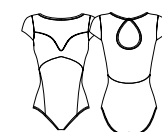
- Wonder Blue
- Pebble
- Illusion



## Hazel

Cap sleeve leotard

Illusion bust line and bateau neck. Clip closure on back. Mesh detailing and keyhole opening on upper back. Angled princess seams follow the dancer's body perfectly.



### YOUTH SIZES

**DAD2029MPN Little Hazel**

Size: 10-11 Y, 12-13 Y

### ADULT SIZES

**DA2029MPN Hazel**

Size: XXS, XS, S, M, L, XL

Material: 80% polyamide micro, 20% elastane.

Fully front lined with removable bra cup pockets in the lining.

Color:

- Alchemy
- Wonder Blue
- Powder Blue
- Pebble
- Illusion





# Harmony

Long sleeve leotard

Long sleeve leotard with a gorgeous V-neck and elongated keyhole detailing. Clip closure on high back. Flattering empire waist line. Raw edge sleeve.



**YOUTH SIZES**

**DAD2030MPN Little Harmony**

Size: 10-11 Y, 12-13 Y

**ADULT SIZES**

**DA2030MPN Harmony**

Size: XXS, XS, S, M, L, XL

Material: 80% polyamide micro, 20% elastane.

Fully front lined with removable bra cup pockets in the lining.

Color:

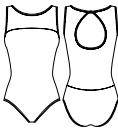
- Powder Blue
- Alchemy
- Giza
- Survivor



# Iris

Tank style leotard

Bateau neck mesh detail with straight bust line. Keyhole opening and a unique iris print on Italian four-way stretch mesh. Beautiful back with intense print.



**YOUTH SIZES**

**DAD2031MPN Little Iris**

Size: 10-11 Y, 12-13 Y

**ADULT SIZES**

**DA2031MPN Iris**

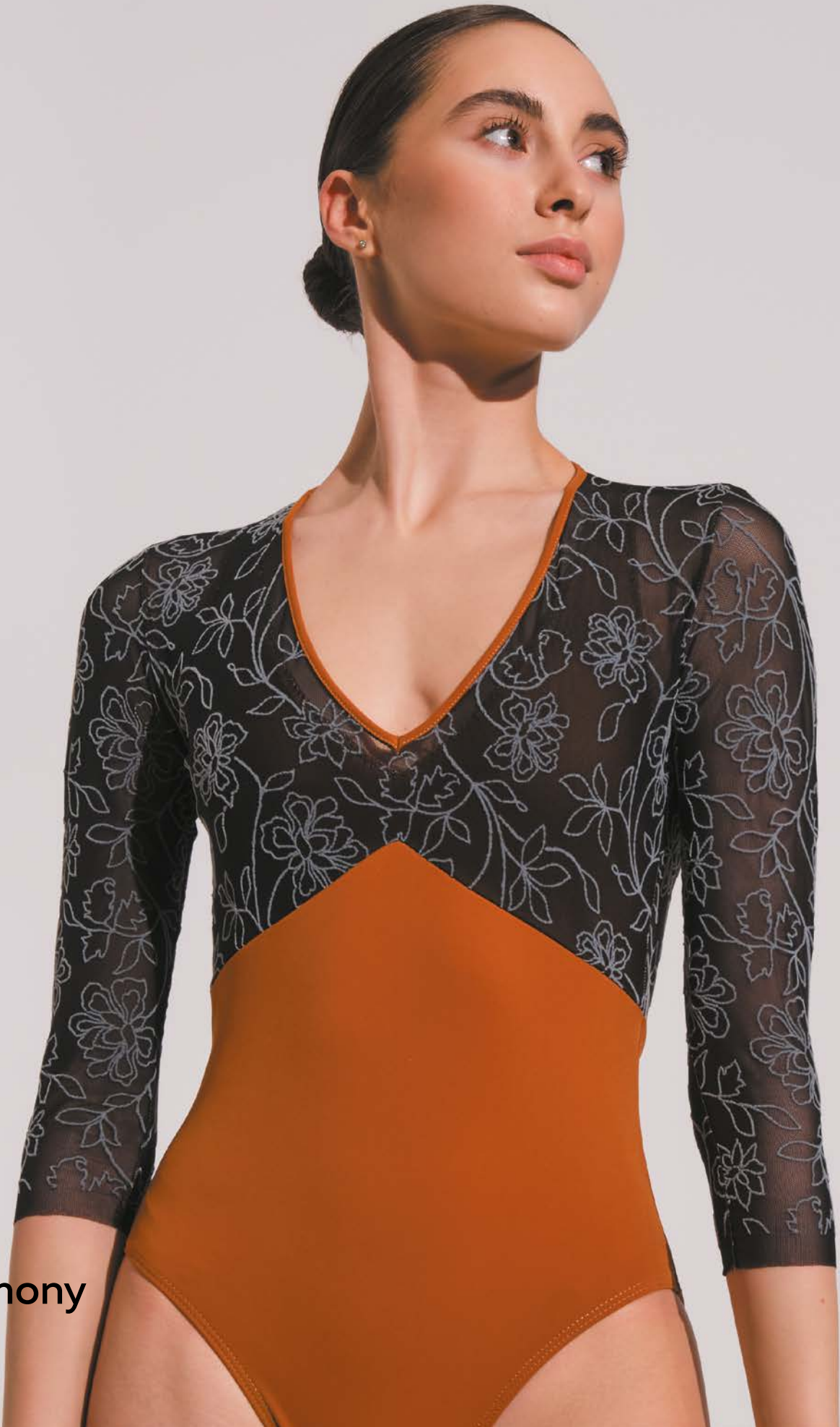
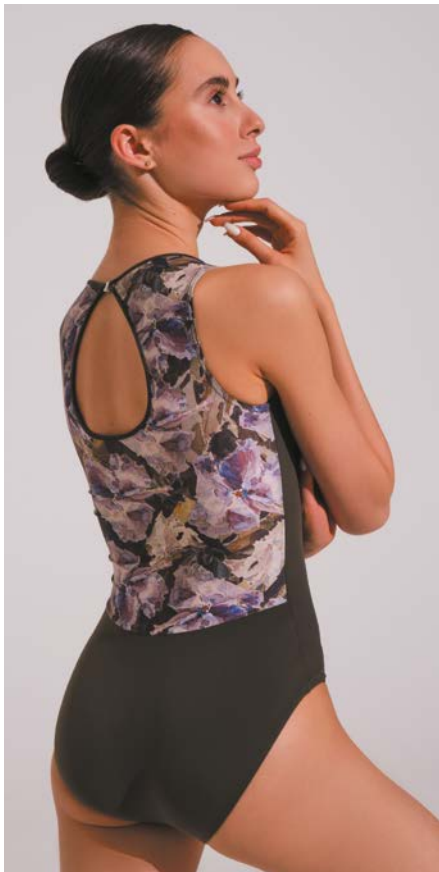
Size: XXS, XS, S, M, L, XL

Material: 80% polyamide micro, 20% elastane.

Fully front lined with removable bra cup pockets in the lining.

Color:

- Alchemy
- Illusion
- Survivor



Harmony  
Leotard



Izzy

Tank style leotard

Illusion bust line and scoop neck. Tank style leotard with empire waist and seamed back. Low back covered with gorgeous print mesh.



YOUTH SIZES

DAD2032MPN Little Izzy

Size: 10-11 Y, 12-13 Y

ADULT SIZES

DA2032MPN Izzy

Size: XXS, XS, S, M, L, XL

Material: 80% polyamide micro, 20% elastane.

Fully front lined with removable bra cup pockets in the lining.

Color:

- Alchemy
- Illusion
- Survivor



Isobel

1/2 sleeve leotard

1/2 length sleeve leotard with plunge back and sweetheart illusion bust line. Angled princess seams.



YOUTH SIZES

DAD2033MPN Little Isobel

Size: 10-11 Y, 12-13 Y

ADULT SIZES

DA2033MPN Isobel

Size: XXS, XS, S, M, L, XL

Material: 80% polyamide micro, 20% elastane.

Fully front lined with removable bra cup pockets in the lining.

Color:

- Alchemy
- Illusion
- Survivor



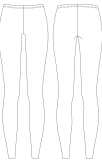
Izzy  
Leotard



# Gloria

Leggings

Italian mesh leggings. Power mesh. Raw edge cuff. Full length that can be adjusted.



**YOUTH SIZES**  
**DAD2037N Little Gloria**  
Size: 10-11 Y, 12-13 Y

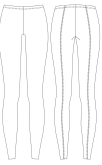
**ADULT SIZES**  
**DA2037N Gloria**  
Size: XXS, XS, S, M, L, XL  
Material: 93% polyamide, 7% elastane.  
Color:  
● Black  
● Alchemy  
● Midnight Sky



# Greta

Leggings

Italian mesh leggings with back seams. Power mesh. Raw edge cuff. Full length that can be adjusted.



**YOUTH SIZES**  
**DAD2037/1N Little Greta**  
Size: 10-11 Y, 12-13 Y

**ADULT SIZES**  
**DA2037/1N Greta**  
Size: XXS, XS, S, M, L, XL  
Material: 93% polyamide, 7% elastane.  
Color:  
● Black  
● Alchemy  
● Midnight Sky



Gloria  
Leggings



# Celine

Pull-on skirt

A classic faux wrap pull-on skirt. Gorgeous lines, longer drop on back. microfiber waistband.



YOUTH SIZES

DAD2035N Little Celine

Size: 10-11 Y, 12-13 Y

ADULT SIZES

DA2035N Celine

Size: XXS, XS, S, M, L, XL

Material: 93% polyamide, 7% elastane.

Color:

- Black
- Alchemy
- Midnight Sky



# Anya

Pull-on skirt

Our best selling skirt. Pull-on style with elegant slits on sides.



YOUTH SIZES

DAD2034MN Little Anya

Size: 10-11 Y, 12-13 Y

ADULT SIZES

DA2034MN Anya

Size: XXS, XS, S, M, L, XL

Material: 80% polyamide micro, 20% elastane.

Color:

- Wonder Blue
- Powder Blue
- Midnight Sky
- Illusion
- Alchemy
- Giza
- Survivor
- Pebble
- Black



# Ingrid

Pull-on skirt

Classic pull-on skirt with fashion print. All Italian materials. Scoop back.



YOUTH SIZES

DAD2036/1N Little Ingrid

Size: 10-11 Y, 12-13 Y

ADULT SIZES

DA2036/1N Ingrid

Size: XXS, XS, S, M, L, XL

Material: 84% polyamide, 16% elastane.

Color:

- Irises







# CLASSIC EXCELLENCE

Classic Excellence Collection is the best uniform range on the market.

Our premium basics are created for the passion of dance.

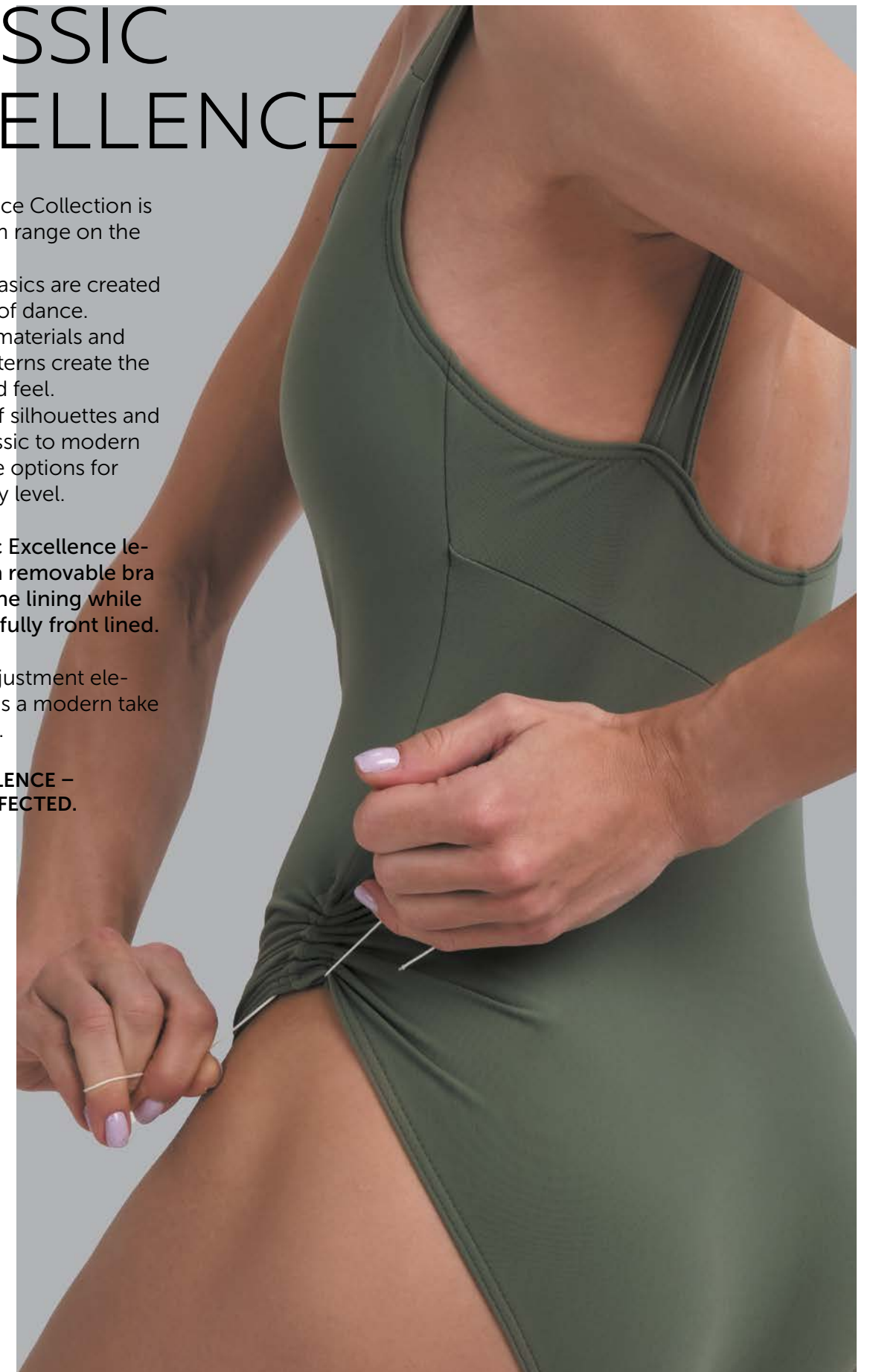
Upscale Italian materials and impeccable patterns create the perfect look and feel.

Unique range of silhouettes and colors from classic to modern provide multiple options for dancers of every level.

All adult Classic Excellence leotards feature a removable bra cup pocket in the lining while youth sizes are fully front lined.

New hip line adjustment element is added as a modern take on a classic line.

**CLASSIC EXCELLENCE –  
TRADITION PERFECTED.**





# Emely

Camisole leotard

A gorgeous adjustable camisole strap leotard with fixed front pinch and adjustable hip pinch details. Open mid-back and elegant sweetheart bustline. Ideal leotard for uniform, classic elegance with modern flair.



YOUTH SIZES

DAD2001MPN Little Emely

Size: 5-6 Y, 6-7 Y, 8-9 Y, 9-10 Y, 10-11 Y, 12-13 Y

ADULT SIZES

DA2001MPN Emely

Size: XXS, XS, S, M, L, XL

Material: 80% polyamide micro, 20% elastane.

Fully front lined. Adult and tween sizes feature removable bra cup pockets in the lining.

Color:

- Ice Blue

● Light Blue

● French Blue

● Bordeaux

● Coffee
- Light Navy

● Royal Blue

● Lavender

● Olive

○ White
- Lilac

● Pink

● Red

● Black



# Elena

Camisole leotard

A new take on a favorite look. Princess seams on front and back. Double V-back detail, fixed pinch front, adjustable cami-sole straps. Also featuring a premium Italian full front lining with bra cup pockets.



YOUTH SIZES

DAD2001/1MPN Little Elena

Size: 5-6 Y, 6-7 Y, 8-9 Y, 9-10 Y, 10-11 Y, 12-13 Y

ADULT SIZES

DA2001/1MPN Elena

Size: XXS, XS, S, M, L, XL

Material: 80% polyamide micro, 20% elastane.

Fully front lined. Adult and tween sizes feature removable bra cup pockets in the lining.

Color:

- Ice Blue

● Light Blue

● French Blue

● Bordeaux

● Coffee
- Light Navy

● Royal Blue

● Lavender

● Olive

○ White
- Lilac

● Pink

● Red

● Black



# Elena

Leotard with straps





Ella

Camisole leotard

Adjustable camisole leotard with elegant princess seams and mesh back detail in V-shape as well as a fixed sweetheart bust line pinch.



YOUTH SIZES

DAD2001/2MPN Little Ella

Size: 5-6 Y, 6-7 Y, 8-9 Y, 9-10 Y, 10-11 Y, 12-13 Y

ADULT SIZES

DA2001/2MPN Ella

Size: XXS, XS, S, M, L, XL

Material: 80% polyamide micro, 20% elastane.

Fully front lined. Adult and tween sizes feature removable bra cup pockets in the lining.

Color:

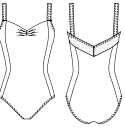
- |             |            |       |
|-------------|------------|-------|
| Ice Blue    | Light Navy | Lilac |
| Light Blue  | Royal Blue | Pink  |
| French Blue | Lavender   | Red   |
| Bordeaux    | Olive      | Black |
| Coffee      | White      |       |



Elsa

Tank style leotard

A gorgeous V-back line with four-way stretch mesh back details. Tank style with fixed front pinch creating a beautiful sweetheart neckline. Princess seams create a contouring line.



YOUTH SIZES

DAD2002/2MPN Little Elsa

Size: 5-6 Y, 6-7 Y, 8-9 Y, 9-10 Y, 10-11 Y, 12-13 Y

ADULT SIZES

DA2002/2MPN Elsa

Size: XXS, XS, S, M, L, XL

Material: 80% polyamide micro, 20% elastane.

Fully front lined. Adult and tween sizes feature removable bra cup pockets in the lining.

Color:

- |             |            |       |
|-------------|------------|-------|
| Ice Blue    | Light Navy | Lilac |
| Light Blue  | Royal Blue | Pink  |
| French Blue | Lavender   | Red   |
| Bordeaux    | Olive      | Black |
| Coffee      | White      |       |



Eva

Tank style leotard

Tank style cut leotard featuring full front lining and open U mid-back. Secure and comfortable straps. Fixed bust pinch. Adjustable leg line.



YOUTH SIZES

DAD2002MPN Little Eva

Size: 5-6 Y, 6-7 Y, 8-9 Y, 9-10 Y, 10-11 Y, 12-13 Y

ADULT SIZES

DA2002MPN Eva

Size: XXS, XS, S, M, L, XL

Material: 80% polyamide micro, 20% elastane.

Fully front lined. Adult and tween sizes feature removable bra cup pockets in the lining.

Color:

- |             |            |       |
|-------------|------------|-------|
| Ice Blue    | Light Navy | Lilac |
| Light Blue  | Royal Blue | Pink  |
| French Blue | Lavender   | Red   |
| Bordeaux    | Olive      | Black |
| Coffee      | White      |       |



Erica

Cap sleeve leotard

Fixed pinch front with sweetheart neckline, double V-back cut. Cap sleeve leotard with adjustable hip line. Lining includes a removable bra cup pocket.



YOUTH SIZES

DAD2003MPN Little Erica

Size: 5-6 Y, 6-7 Y, 8-9 Y, 9-10 Y, 10-11 Y, 12-13 Y

ADULT SIZES

DA2003MPN Erica

Size: XXS, XS, S, M, L, XL

Material: 80% polyamide micro, 20% elastane.

Fully front lined. Adult and tween sizes feature removable bra cup pockets in the lining.

Color:

- |             |            |       |
|-------------|------------|-------|
| Ice Blue    | Light Navy | Lilac |
| Light Blue  | Royal Blue | Pink  |
| French Blue | Lavender   | Red   |
| Bordeaux    | Olive      | Black |
| Coffee      | White      |       |





# Ellen

Tank style leotard

Tank style leotard featuring elegant princess seams and double V-back. Classic pattern with modern flair, secure and supportive straps. Sweetheart fixed pinch.



YOUTH SIZES

DAD2002/1MPN Little Ellen

Size: 5-6 Y, 6-7 Y, 8-9 Y, 9-10 Y, 10-11 Y, 12-13 Y

ADULT SIZES

DA2002/1MPN Ellen

Size: XXS, XS, S, M, L, XL

Material: 80% polyamide micro, 20% elastane. Fully front lined. Adult and tween sizes feature removable bra cup pockets in the lining.

Color:

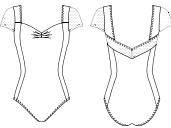
- |             |            |       |
|-------------|------------|-------|
| Ice Blue    | Light Navy | Lilac |
| Light Blue  | Royal Blue | Pink  |
| French Blue | Lavender   | Red   |
| Bordeaux    | Olive      | Black |
| Coffee      | White      |       |



# Effie

Mesh cap sleeve leotard

A breathtaking mesh sleeve and V-back detail leotard with princess seams and a gorgeous ballet leg cut. Mesh sleeve is featured in four-way stretch Italian tulle, the sleeve is not hemmed for comfort.



YOUTH SIZES

DAD2003/2MPN Little Effie

Size: 5-6 Y, 6-7 Y, 8-9 Y, 9-10 Y, 10-11 Y, 12-13 Y

ADULT SIZES

DA2003/2MPN Effie

Size: XXS, XS, S, M, L, XL

Material: 80% polyamide micro, 20% elastane. Fully front lined. Adult and tween sizes feature removable bra cup pockets in the lining.

Color:

- |             |            |       |
|-------------|------------|-------|
| Ice Blue    | Light Navy | Lilac |
| Light Blue  | Royal Blue | Pink  |
| French Blue | Lavender   | Red   |
| Bordeaux    | Olive      | Black |
| Coffee      | White      |       |



Ellen  
Leotard

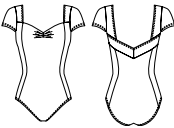




# Evita

Cap sleeve leotard

Cap sleeve leotard featuring square to V pinch fixed neck line. Beautiful lines created by the princess seams. Fully front lined with ballet leg cut. Double V-back detailing.



YOUTH SIZES

DAD2003/1MPN Little Evita

Size: 5-6 Y, 6-7 Y, 8-9 Y, 9-10 Y, 10-11 Y, 12-13 Y

ADULT SIZES

DA2003/1MPN Evita

Size: XXS, XS, S, M, L, XL

Material: 80% polyamide micro, 20% elastane. Fully front lined. Adult and tween sizes feature removable bra cup pockets in the lining.

Color:

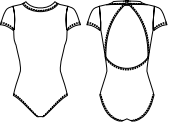
- |             |            |       |
|-------------|------------|-------|
| Ice Blue    | Light Navy | Lilac |
| Light Blue  | Royal Blue | Pink  |
| French Blue | Lavender   | Red   |
| Bordeaux    | Olive      | Black |
| Coffee      | White      |       |



# Earie

Cap sleeve leotard

High neck cap sleeve leotard with back of the neck closure. Ballet leg cut and classic lines. All Italian materials, latest pattern.



YOUTH SIZES

DAD2004MPN Little Earie

Size: 5-6 Y, 6-7 Y, 8-9 Y, 9-10 Y, 10-11 Y, 12-13 Y

ADULT SIZES

DA2004MPN Earie

Size: XXS, XS, S, M, L, XL

Material: 80% polyamide micro, 20% elastane. Fully front lined. Adult and tween sizes feature removable bra cup pockets in the lining.

Color:

- |             |            |       |
|-------------|------------|-------|
| Ice Blue    | Light Navy | Lilac |
| Light Blue  | Royal Blue | Pink  |
| French Blue | Lavender   | Red   |
| Bordeaux    | Olive      | Black |
| Coffee      | White      |       |



Evita  
Leotard

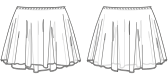




Echo

Mesh skirt

A new take on an old favorite, Italian four-way stretch mesh pull-on skirt. Hemless skirt is made for an easy length adjustment. Longer on back for a classic line.



**YOUTH SIZES**  
**DAD2005N Little Echo**  
Size: 5-6 Y, 6-7 Y, 8-9 Y, 9-10 Y, 10-11 Y, 12-13 Y

**ADULT SIZES**  
**DA2005N Echo**  
Size: XXS, XS, S, M, L, XL  
Material: 93% polyamide, 7% elastane.  
Color:

- Ice Blue

Light Blue

French Blue

Bordeaux

Coffee
- Light Navy

Royal Blue

Lavender

Olive

White
- Lilac

Pink

Red

Black



Eden

Mesh skirt with ties

A classic wrap skirt with stretch waistband, length can be adjusted on any size: due to no hem edging. High quality Italian stretch mesh will not run when cut.



**YOUTH SIZES**  
**DAD2006N Little Eden**  
Size: 5-6 Y, 6-7 Y, 8-9 Y, 9-10 Y, 10-11 Y, 12-13 Y

**ADULT SIZES**  
**DA2006N Eden**  
Size: XXS, XS, S, M, L, XL  
Material: 93% polyamide, 7% elastane.  
Color:

- Ice Blue

Light Blue

French Blue

Bordeaux

Coffee
- Light Navy

Royal Blue

Lavender

Olive

White
- Lilac

Pink

Red

Black



Practice tutu

5-Layer Tutu skirt

**0455/3N**  
Size: XXS, XS, S, M, L, XL  
Material: 100% nylon.

Practice tutu

7-Layer Tutu skirt

**0455N**  
Size: XXS, XS, S, M, L, XL  
Material: 100% nylon.

Five & Seven layer hooped practice tutu with built in ruffled panty. Featuring Italian and English tulle. Our tutus are made in the greatest traditions of Russian ballet all made by hand by the most skilled tutu makers in the world.



	Bianco 010		Cerise 024		Mela 038		Viola 028
	Seta 008		Ciclamino 035		Verde 021		Lilla 027
	Avorio 009		Rosso 026		Olivo 040		Glicine 059
	Panna 013		Bordeaux 030		Oceano 020		Castoro 043
	Sabbia 007		Arancio 025		Nilo 032		Marrone 029
	Pesco 014		Oro 023		Cielo 112		Grigio 033
	Salmone 031		Limone 022		Pavone 016		Fumo 034
	Rosa 011		Pistacchio 019		Azzuro 017		Nero 015
	Pink 111		Cidro flo 003		Bleu 018		Azalea flo 001
			Verde flo 004		Marine 036		Arancio flo 002





VAGANOVA  
BALLET  
ACADEMY



# NIKOLAY® ACADEMY

The best teachers know that the key of future success is always in details. This has become the main reason for collaboration of NIKOLAY® with the worldwide famous ballet schools – The Bolshoi Ballet Academy, Vaganova Academy of Russian Ballet, Boris Eifman Dance Academy.

The secret of NIKOLAY® uniform popularity is in its refined form. It's the carefully verified line of the back that allows the teacher to control the correct work of shoulders and neck, the form of hip cut that makes the movement easy, staying on the same place even during the most intensive exercises, and unexceptionable quality of fabrics.

**All leotards are fully front lined and most feature removable bra cup pockets in the lining.**



BOLSHOI  
BALLET  
ACADEMY





## Colette

Leotard with straps

Vaganova Ballet Academy uniform. Adjustable pinch front. Adjustable camisole straps. Classic ballet leg cut.



### YOUTH SIZES DAD1491MPN Little Colette

Fully front lined.  
Size: 8-9 Y, 9-10 Y, 10-11 Y  
Fully front lined and pockets for cups.  
Size: 12-13 Y

### ADULT SIZES DA1491MPN Colette

Fully front lined and pockets for cups.  
Size: XXS, XS, S, M, L, XL  
Material: 80% polyamide micro,  
20% elastane.

Color:  
Ice Blue Light Blue Red  
Lilac Pink White  
Coffee Dark Blue Black



## Caroline

Leotard with straps and mesh

Bolshoi Ballet Academy uniform. Adjustable pinch front. Mid back opening. 4-way stretch mesh detail. Secure adjustable camisole straps



### YOUTH SIZES DAD1491/1MPN Little Caroline

Fully front lined.  
Size: 8-9 Y, 9-10 Y, 10-11 Y  
Fully front lined and pockets for cups.  
Size: 12-13 Y

### ADULT SIZES DA1491/1MPN Caroline

Fully front lined and pockets for cups.  
Size: XXS, XS, S, M, L, XL  
Material: 80% polyamide micro,  
20% elastane.

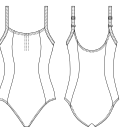
Color:  
Ice Blue Light Blue Red  
Lilac Pink White  
Coffee Dark Blue Black



## Christal

Leotard with straps

Princess seams. Adjustable camisole straps. Adjustable pinch front. Basic leotard with adjustable straps and additional seams that make the figure look even more thin and graceful.



### YOUTH SIZES DAD1001MPN Little Christal

Fully front lined.  
Size: 8-9 Y, 9-10 Y, 10-11 Y  
Fully front lined and pockets for cups.  
Size: 12-13 Y

### ADULT SIZES DA1001MPN Christal

Fully front lined and pockets for cups.  
Size: XXS, XS, S, M, L, XL  
Material: 80% polyamide micro,  
20% elastane.

Color:  
Ice Blue Light Blue Red  
Lilac Pink White  
Coffee Dark Blue Black





# Camilla

Leotard with straps

Adjustable pinch front. Elegant back design. Elastic detailing crisscrossing on front.



**YOUTH SIZES**

**DAD1258MPN Little Camilla**

Fully front lined. Size: 10-11 Y  
Fully front lined and pockets for cups.  
Size: 12-13 Y

**ADULT SIZES**

**DA1258MPN Camilla**

Fully front lined and pockets for cups.  
Size: XXS, XS, S, M, L, XL  
Material: 80% polyamide micro,  
20% elastane.  
Color:

- Ice Blue

● Dark Blue

● Coffee

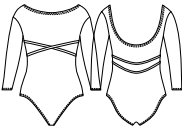
● Black



# Carissa

Leotard with long sleeve

We added sleeves to our top seller DA1258MPN for winter time or strongly conditioning classes. Feel the comfort, saving the usual look in the class!



**YOUTH SIZES**

**DA1260MPN Carissa**

Fully front lined.  
Size: XXS, XS, S, M, L, XL  
Material: 80% polyamide micro,  
20% elastane.  
Color:

- Ice Blue

● Dark Blue

● Coffee

● Black



**Camilla**  
Leotard with straps

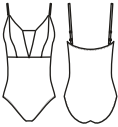




# Charlotte

Leotard with straps

Style preferable for elder classes and performances — the straps made of nude elastic and the front detail create a slim and airy silhouette.



**YOUTH SIZES**  
**DAD1930MPN Little Charlotte**  
Fully front lined.  
Size: 8-9 Y, 9-10 Y, 10-11 Y, 12-13 Y

**ADULT SIZES**  
**DA1930MPN Charlotte**  
Fully front lined.  
Size: XXS, XS, S, M, L, XL  
Material: 80% polyamide micro, 20% elastane.  
Color:

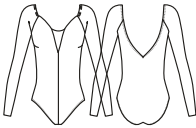
- |   |   |   |
|---|---|---|
| <span style="color: #FF69B4;">●</span> Pink     | <span style="color: #6B8E23;">●</span> Olive        | <span style="color: #4169E1;">●</span> Royal Blue |
| <span style="color: #DC143C;">●</span> Red      | <span style="color: #8B4513;">●</span> Coffee       | <span style="color: #FFFFFF;">○</span> White      |
| <span style="color: #9370DB;">●</span> Lilac    | <span style="color: #000000;">●</span> Black        | <span style="color: #191970;">●</span> Light Navy |
| <span style="color: #6495ED;">●</span> Ice Blue | <span style="color: #00008B;">●</span> Dark Blue    | <span style="color: #87CEFA;">●</span> Light Blue |
|   | <span style="color: #654321;">●</span> Medium Taupe |   |



# Carlotta

Leotard with long sleeve

Created in 2019 for qualification exams at the Bolshoi Ballet Academy, this model drew a response.



**YOUTH SIZES**  
**DAD1931MN Little Carlotta**  
Without lining.  
Size: 8-9 Y, 9-10 Y, 10-11 Y, 12-13 Y

**ADULT SIZES**  
**DA1931MN Carlotta**  
Without lining.  
Size: XXS, XS, S, M, L, XL  
Material: 80% polyamide micro, 20% elastane.  
Color:

- |  |   |   |
|--|---|---|
| <span style="color: #FF69B4;">●</span> Pink  | <span style="color: #8B4513;">●</span> Coffee     | <span style="color: #FFFFFF;">○</span> White        |
| <span style="color: #DC143C;">●</span> Red   | <span style="color: #4169E1;">●</span> Royal Blue | <span style="color: #87CEFA;">●</span> Light Blue   |
| <span style="color: #9370DB;">●</span> Lilac | <span style="color: #000000;">●</span> Black      | <span style="color: #6495ED;">●</span> Ice Blue     |
|  | <span style="color: #00008B;">●</span> Dark Blue  | <span style="color: #654321;">●</span> Medium Taupe |



**Charlotte**  
Leotard with straps

**Carlotta**  
Leotard with long sleeve



# Celine

Mesh skirt

Short mesh skirt with wide elastic belt to underline the waist — have the similar form to the bestseller 06017/1N, but with straight line of the back.



**YOUTH SIZES**

**DAD1945N Little Celine**

Size: 8-9 Y, 9-10 Y, 10-11 Y, 12-13 Y

**ADULT SIZES**

**DA1945N Celine**

Size: XXS, XS, S, M, L, XL

Material: Belt: 80% polyamide micro, 20% elastane.,

Skirt: 93% polyamide, 7% elastane.

Length: 13"

Color:

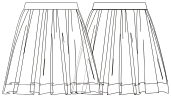
- |          |              |            |
|----------|--------------|------------|
| Pink     | Olive        | Royal Blue |
| Red      | Coffee       | White      |
| Lilac    | Black        | Light Navy |
| Ice Blue | Medium Taupe |            |



# Calyssa

Folk and character skirt

Long two-layer skirt with soft gathers was made by order of Vaganova Academy for character and folk dance. Wide elastic belt can be fixed on waist or hips and airy mesh allows the dancer to feel free during any movements.



**YOUTH SIZES**

**DAD1478N Little Calyssa**

Size: 8-9 Y, 9-10 Y, 10-11 Y, 12-13 Y

**ADULT SIZES**

**DA1478N Calyssa**

Size: XXS, XS, S, M, L, XL

Material: 93% polyamide, 7% elastane.

Size: 8-9 Y — 13,8", Size: 9-10 Y — 15,75",

Size: 11-13 Y — 17,7", Size: XXS — 19,7",

Size: XS-XL — 21,65"

Color:

- |       |            |              |
|-------|------------|--------------|
| White | Royal Blue | Light Blue   |
| Pink  | Coffee     | Ice Blue     |
| Lilac | Black      | Medium Taupe |



# Calyssa

Folk and character skirt





# FUTURE STARS III

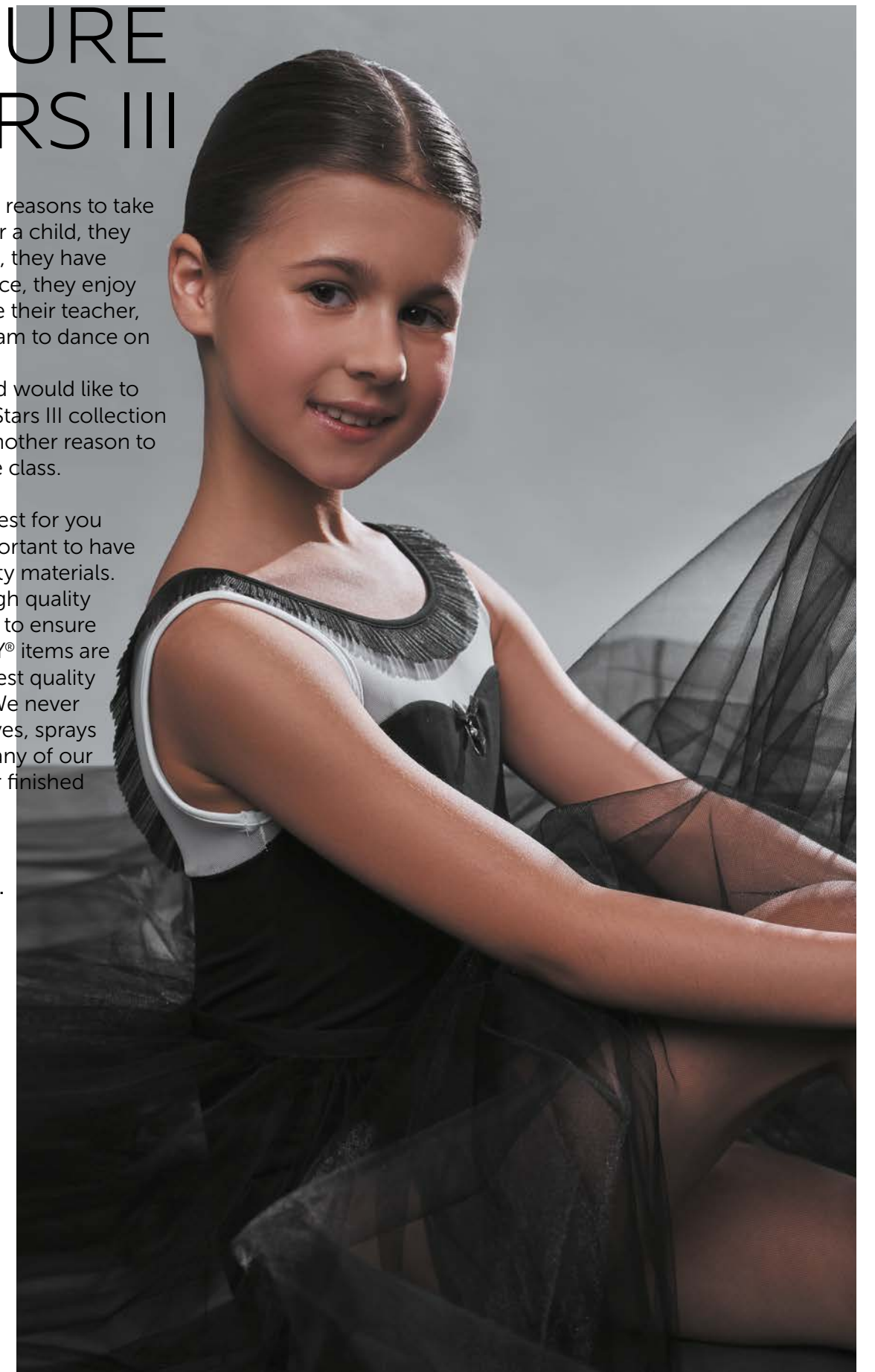
There are many reasons to take ballet classes for a child, they love movement, they have friends that dance, they enjoy music, they love their teacher, they have a dream to dance on stage...

NIKOLAY® brand would like to present Future Stars III collection created to be another reason to love your dance class.

Choosing the best for you child — it is important to have safe, high-quality materials.

We use only high quality Italian materials to ensure that all NIKOLAY® items are made of the finest quality raw materials. We never use any toxic dyes, sprays or cleaners on any of our raw material or finished product.

**All leotards are fully front lined.**





# Beth

Tank style leotard

A perfect mix of high quality stretch mesh and Italian microfiber is soft and comfortable on the skin. Tank leotard with a beautiful v-detail on the chest and mid open back with a secure clip closure. Fully front lined. Classic leg cut.



## DAD1975MPN Beth

Size: 5-6 Y, 6-7 Y, 8-9 Y, 9-10 Y, 10-11 Y, 12-13 Y

Material: 80% microfiber, 20% elastane.

Fully front lined.

Color:

- Powder
- Tiffany
- Light Blue
- White
- Black



# Belka

Tank style leotard

Tank leotard with a beautiful edge ruching detail from front to back. Sweetheart neckline. Made with the high-end Italian microfiber and mesh. Very soft and comfortable. Featuring a sparkle rhinestone detail on the chest. Fully front lined. Classic leg cut.



## DAD1976MPN Belka

Size: 5-6 Y, 6-7 Y, 8-9 Y, 9-10 Y, 10-11 Y, 12-13 Y

Material: 80% microfiber, 20% elastane.

Fully front lined.

Color:

- Powder
- Tiffany
- Light Blue
- White
- Black



# Belle

Tank style leotard

A tank style leotard with a gorgeous shoulder overlay detail. High modest slight V-back. Made with the high-end Italian microfiber and mesh. Very soft and comfortable. Featuring a sparkle rhinestone detail on the chest. Fully front lined. Classic leg cut.



## DAD1977MPN Belle

Size: 5-6 Y, 6-7 Y, 8-9 Y, 9-10 Y, 10-11 Y, 12-13 Y

Material: 80% microfiber, 20% elastane.

Fully front lined.

Color:

- Powder
- Tiffany
- Light Blue
- White
- Black



# Belinda

Cap sleeve leotard

A camisole base leotard with a mesh cap-sleeve detail and ruching on the top. High modest high back. Made with the high-end Italian microfiber and mesh. Very soft and comfortable. Featuring a sparkle rhinestone detail on the chest. Fully front lined. Classic leg cut.



## DAD1978MPN Belinda

Size: 5-6 Y, 6-7 Y, 7-8 Y, 8-9 Y, 9-10 Y, 10-11 Y, 12-13 Y

Material: 90% cotton, 10% elastane.

Fully front lined.

Color:

- Powder
- Tiffany
- Light Blue
- White
- Black





# Blane

High waist dress

An amazing dress that is just as perfect for the stage as it is for a ballet class. High waist and mesh back create a beautiful look. Unfinished edging on the mesh provides flexibility to shorten the dress at any time. Bust lined. Classic leg cut.



**DAD1979MPN Blane**

Size: 5-6 Y, 6-7 Y, 8-9 Y, 9-10 Y, 10-11 Y, 12-13 Y

Material: 80% microfiber, 20% elastane. Fully front lined.

Color:

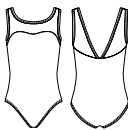
- Powder
- Tiffany
- Light Blue
- White
- Black



# Brenda

Tank style leotard

Tank style leotard with a mid drop back featuring multi-color rosette print. Comfortable and soft to the skin. Sweetheart neckline. Bust lined. Classic leg cut. Fully front lined.



**DAD1980MPN Brenda**

Size: 5-6 Y, 6-7 Y, 8-9 Y, 9-10 Y, 10-11 Y, 12-13 Y

Material: 80% microfiber, 20% elastane. Fully front lined.

Color:

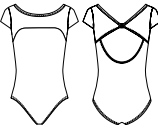
- Powder/Flowers
- Tiffany/Flowers
- Black/Flowers



# Bryanna

Tank style leotard

Tank style leotard with a mid drop back featuring multi-color rosette print. Comfortable and soft to the skin. Sweetheart neckline. Bust lined. Classic leg cut. Fully front lined.



**DAD1981MPN Bryanna**

Size: 5-6 Y, 6-7 Y, 8-9 Y, 9-10 Y, 10-11 Y, 12-13 Y

Material: 80% microfiber, 20% elastane. Fully front lined.

Color:

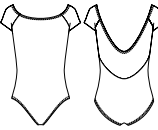
- Powder/Flowers
- Tiffany/Flowers
- Black/Flowers



# Bradie

Cap sleeve leotard

A cap sleeve leotard featuring rosette multi-color print detail and mid to low back drop. High neckline. Fully front lined. Classic leg cut.



**DAD1982MPN Bradie**

Size: 5-6 Y, 6-7 Y, 8-9 Y, 9-10 Y, 10-11 Y, 12-13 Y

Material: 80% microfiber, 20% elastane. Fully front lined.

Color:

- Powder/Flowers
- Tiffany/Flowers
- Black/Flowers

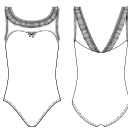




# Bailie

Tank style leotard

Fully front lined. Sweetheart neckline. Edge ruching detail from front to back. Contrast mesh and microfiber color matching. V-back drop. Sparkle rhinestone on the chest.



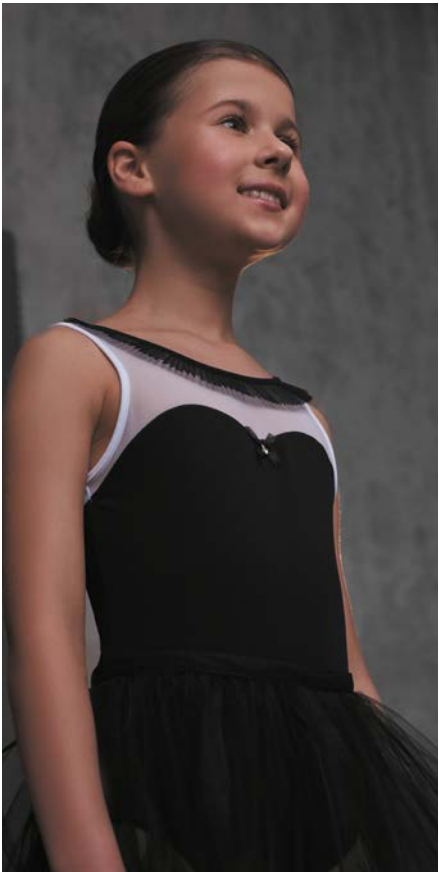
**DAD1983MPN Bailie**

Size: 5-6 Y, 6-7 Y, 8-9 Y, 9-10 Y, 10-11 Y, 12-13 Y

Material: 80% microfiber, 20% elastane. Fully front lined.

Color:

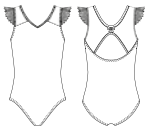
- ☒ Powder
- ☐ White
- ☒ Tiffany
- ☐ Black



# Babette

Tank style leotard

A tank style leotard with pleated mesh shoulder detail, as one rhinestone featured on a mesh back with a mid back opening. Fully front lined. Classic leg cut.



**DAD1984MPN Babette**

Size: 5-6 Y, 6-7 Y, 8-9 Y, 9-10 Y, 10-11 Y, 12-13 Y

Material: 80% microfiber, 20% elastane. Fully front lined.

Color:

- ☒ Powder
- ☐ White
- ☒ Tiffany
- ☐ Black



# Blake

Tank style dress

A tank style dress, with a pleated ruffle detail. Featuring a rhinestone on the bust. Mid back and most comfortable microfiber in the industry. All Italian tulle attached skirt. Front lined. Classic leg cut.



**DAD1985MPN Blake**

Size: 5-6 Y, 6-7 Y, 8-9 Y, 9-10 Y, 10-11 Y, 12-13 Y

Material: 80% microfiber, 20% elastane. Fully front lined.

Color:

- ☐ White
- ☒ Black



# Brynn

Pull-on mesh skirt

The perfect stretch mesh skirt for children. Pull-on style. Rhinestone detail on the waist.



**DAD1986N Brynn**

Size: 5-6 Y, 6-7 Y, 8-9 Y, 9-10 Y, 10-11 Y, 12-13 Y

Material: 93% microfiber, 7% elastane.

Color:

- ☒ Powder
- ☐ White
- ☒ Tiffany
- ☐ Black
- ☐ Light Blue





# Brie

Pull-on skirt flower print

Rosette multi color flower print skirt.  
Light and comfortable.



## DAD1986/1N Brie

Size: 5-6 Y, 6-7 Y, 8-9 Y, 9-10 Y, 10-11 Y,  
12-13 Y  
Material: 93% microfiber, 7% elastane.  
Color:

Flowers



# Brooke

Mesh and tulle pull on skirt

A round pull-on skirt with an elastic band.  
Two layers of premium Italian tulle with a  
third layer of stretch mesh.



## DAD1987N Brooke

Size: 5-6 Y, 6-7 Y, 8-9 Y, 9-10 Y, 10-11 Y,  
12-13 Y  
Material: 93% microfiber, 7% elastane.  
Color:

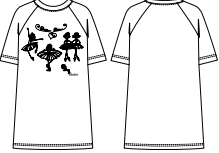
Powder White  
Tiffany Black



# Bleona

T-shirt oversize

Fun and stylish oversized t-shirt. Made in-  
house. Print: "Future Star".



## DAD1991N Bleona

Size: 5-6 Y, 6-7 Y, 8-9 Y, 9-10 Y, 10-11 Y,  
12-13 Y  
Material: 80% cotton, 20% elastane.  
Color:

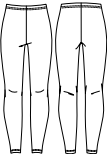
White  
Black  
Grey melange/Black



# Bowie

Leggings

Great leggings for any type of activity! Wear  
them as a warm-up, wear them to school!  
Comfortable elastic waistband. Breathable  
cotton.



## DAD1992N Bowie

Size: 5-6 Y, 6-7 Y, 8-9 Y, 9-10 Y, 10-11 Y,  
12-13 Y  
Material: 80% cotton, 20% elastane.  
Color:

White  
Black  
Grey melange/Black





# Bobbie

Jumper

Want a great ballet themed sweater? We have this perfect piece for you. Future star is what you are! cotton majority, very comfortable and easy to take care of.



## DAD1993N Bobbie

Size: 5-6 Y, 6-7 Y, 8-9 Y, 9-10 Y, 10-11 Y, 12-13 Y

Material: 95% cotton, 5% elastane.

Color:

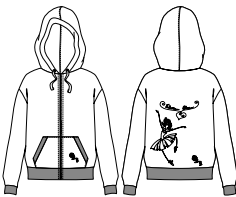
- Black
- Grey melange



# Bliss

Hoodie with zipper

A hoodie from Russia? What can be better? A Future Star! Great hoodie for any dancer to wear anywhere. Comfortable and stylish. Featuring front zip and long drawstring in the hood.



## DAD1994N Bliss

Size: 5-6 Y, 6-7 Y, 8-9 Y, 9-10 Y, 10-11 Y, 12-13 Y

Material: 95% cotton, 5% elastane.

Color:

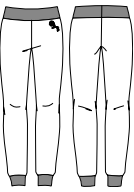
- Black
- Grey melange



# Blossom

Pants with ankle cuffs

Sweat pants from Russia with love. Comfortable waistband, tapered leg. Ideal to uniform the while class, or even a school.



## DAD1995N Blossom

Size: 5-6 Y, 6-7 Y, 8-9 Y, 9-10 Y, 10-11 Y, 12-13 Y

Material: 95% cotton, 5% elastane.

Color:

- White
- Black
- Grey melange/Black







# KNITTED WARM-UP

NIKOLAY® knitwear collection is made with the highest quality merino wool. The wool is sourced from the best knitting producers in the world, and our designs are carefully cut for dancers' bodies. Quality and design is unsurpassed.



High-technology production processing makes the ready garment soft and not itchy.



Color stays bright after dozens of washing cycles.



The yarn complies the German, Italian and European Laws regarding the prohibition of the use of toxic substances.



Super comfort is achieved by purl-knitting technique that allows the garment to follow body curvature perfectly.



ECO. The yarn is made by a sustainable factory, which uses innovative dyeing on cones that can achieve 50 % of water saving compared to conventional dyeing. Also the large part of the energy supplied by the photovoltaic system installed on the roof of the plant.

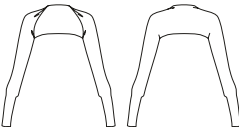




# Kaya

Shrug

A classic shrug with long sleeves. Features elastic cuffs and soft premium merino wool.



06201/2N Kaya

Size: one size  
Material: 50% merino wool, 50% acryl.  
Color:

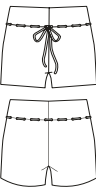
- Pink
- Grey-Blue
- Khaki
- Light Blue
- Black
- Bordeaux



# Katherine

Shorts

Warm-up shorts with adjustable drawstring. Higher waistline for comfort and style. Premium merino wool.



06202/2N Katherine

Material: 50% merino wool, 50% acryl.  
Size: 8-10 Y  
Color:

Black

Grey-Blue

Khaki

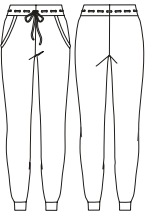
Bordeaux



# Kelly

Pants

Gorgeous full length pants with tapered leg. Two pockets and adjustable waist draw-string. Features soft premium merino wool, hypoallergenic, fast drying and comfortable.



06206/2N Kelly

Material: 50% merino wool, 50% acryl.  
Size: 8-10 Y  
Color:

- Black
- Grey-Blue
- Khaki
- Bordeaux



# Kaden

Legwarmers

Merino wool full length legwarmers. Elasticated edges keep these legwarmers above or below the ankle. Additional elastane reinforcement on the top. Soft and comfortable.



06208/2N Kaden

Size: one size  
Length: 23,62"  
Material: 50% merino wool, 50% acryl.  
Color:

Pink

Light Blue

Black

06209/2N Kaden

Size: one size  
Length: 31,50"  
Material: 50% merino wool, 50% acryl.  
Color:

Bordeaux

Grey-Blue

Black

Light Blue

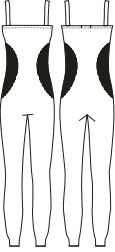




# Kane

Unitard

Full length unitard with tank style straps cinching detail on the waist. Tapered leg cut. Purl-knitting technology follows the body and gives extra comfort during warm-up. Soft premium merino wool, hypoallergenic and stylish.



**06211/2N Kane**

Material: 50% merino wool, 50% acryl.

Size: 8-10 Y, 11-12 Y

Color:

● Pink

● Light Blue

● Black

Size: XXS-XS, S-M, L-XL

● Black ● Grey-Blue

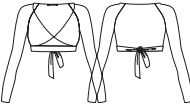
● Khaki ● Bordeaux



# Kailani

Bolero

A bolero style wrap sweater. Premium knit of Merino wool. This sweater is one of the most comfortable and stylish warm-ups you can find.



**06212/2N Kailani**

Material: 50% merino wool, 50% acryl.

Size: 8-10 Y, 11-12 Y

Color:

● Pink

● Light Blue

● Black

Size: XXS-XS, S-M, L-XL

● Black ● Grey-Blue

● Khaki ● Bordeaux







# HEAT RETENTION WEAR

WITH SAUNA EFFECT

The Heat Retention Wear collection is designed with the fusion of high-tech materials and insider knowledge of the dancers' needs. With the new membrane coated fabric you can easily minimize the time needed for warm-up. The microclimate is efficiently preserved between the skin and fabric which guarantees faster warm-up while staying flexible and comfortable.



Membrane fabric



Odor control



100% Thermal isolation



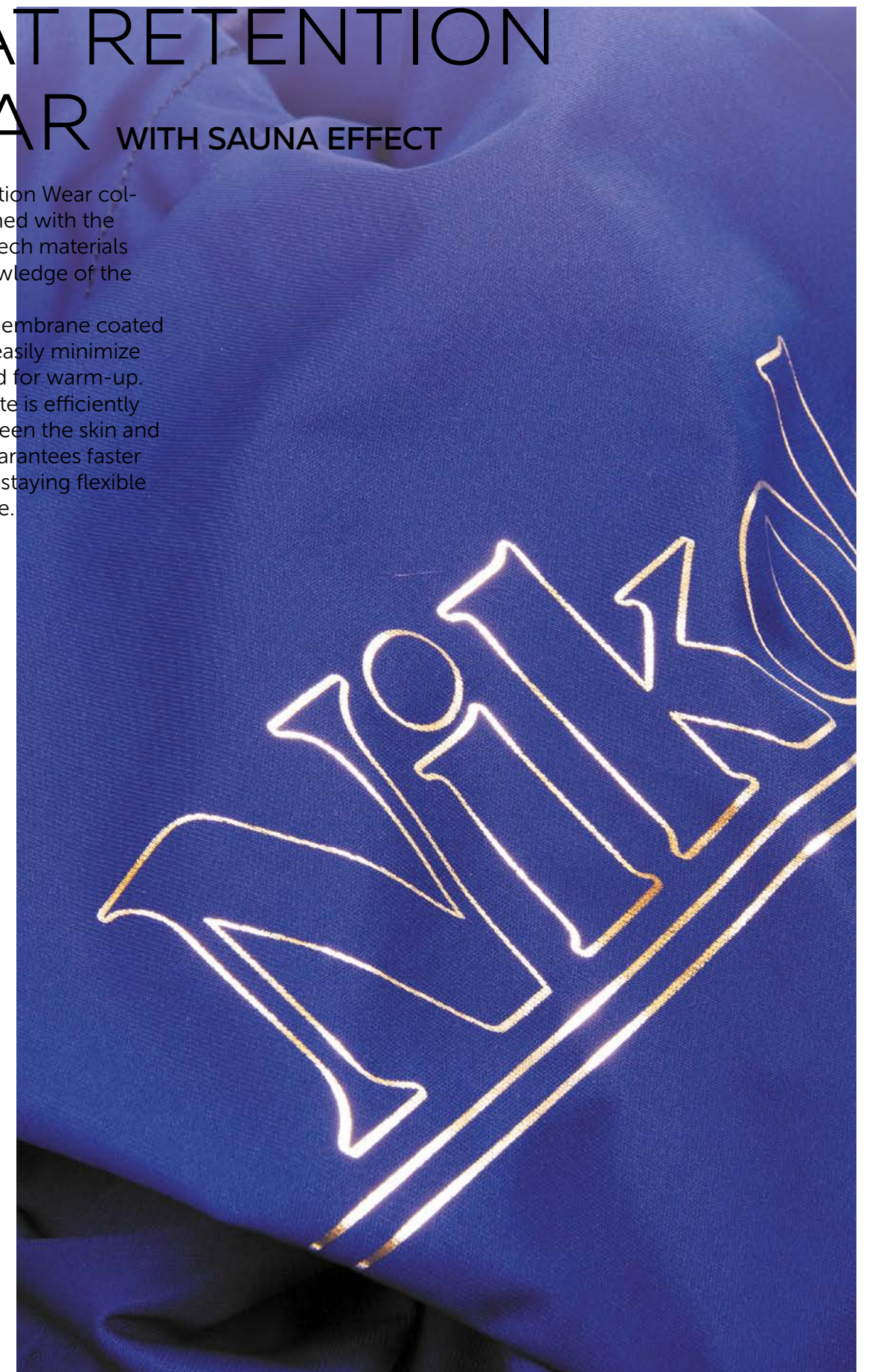
Bi-stretch



Not crunching



Machine washable

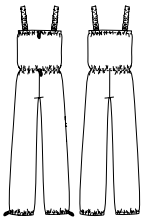




# Bowie

Unitard

Unitard with sauna effect is made of 100% polyester. specially for practice and aerobics.



## 0403PTN Bowie

Size: 10-11 Y, 12-13 Y, XXS, XS, S, M, L, XL  
Material: 100% polyester.  
Color:

- Grey/Silver
- Bordeaux/Gold
- Blue/Silver
- Black/Silver



Bordeaux/Gold

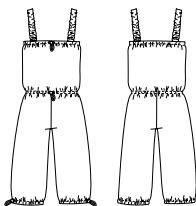


Grey/Silver

# Bobbie

Shortard

Short unitard with sauna effect for practice and aerobics.



## 0404PTN Bobbie

Size: 10-11 Y, 12-13 Y, XXS, XS, S, M, L, XL  
Material: 100% polyester.  
Color:

- Grey/Silver
- Bordeaux/Gold
- Blue/Silver
- Black/Silver



Grey/Silver

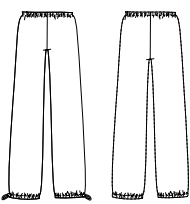


Grey/Silver

# Bliss

Pants

Pants with sauna effect is made of 100% polyester. specially for practice and aerobics.



## 0405PTN Bliss

Size: 10-11 Y, 12-13 Y, XXS, XS, S, M, L, XL  
Material: 100% polyester.  
Color:

- Grey/Silver
- Bordeaux/Gold
- Blue/Silver
- Black/Silver



Bordeaux/Gold

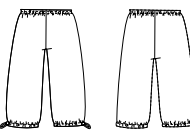


Black/Silver

# Blossom

Pants with ankle cuffs

Pants with sauna effect is made of 100% polyester. specially for practice and aerobics.



## 0406PTN Blossom

Size: 10-11 Y, 12-13 Y, XXS, XS, S, M, L, XL  
Material: 100% polyester.  
Color:

- Grey/Silver
- Bordeaux/Gold
- Blue/Silver
- Black/Silver



Grey/Silver

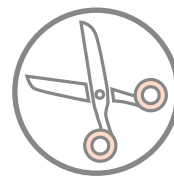


Blue/Silver

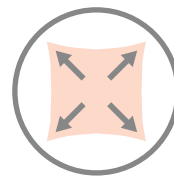


# SEAMLESS UNDERGARMENTS

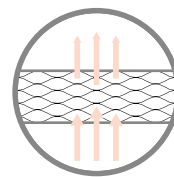
EACH DANCER CAN CUSTOMIZE THEIR UNDERGARMENT TO PERFECTLY FIT UNDER ANY GARMENT. DESIGNED TO BE INVISIBLE AND COMFORTABLE ON THE SKIN.



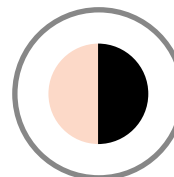
Perfect base for DIY - use scissors to make any form you need. Create your own exclusive hand-made costume!



Stretchy - follows the shape of body during any movements.



Soft and breathable microfiber feels very comfortable on your skin.



Available in black and skin colors.



## DA 300PRN SEAMLESS BRIEFS



Size: XXS, XS, S, M, L  
86% polyamide, 14% elastane.  
● Skin ● Black

## DA 302PRN SEAMLESS BRIEFS



Size: XXS, XS, S, M, L  
86% polyamide, 14% elastane.  
● Skin ● Black

## DA 3015MN SEAMLESS BRIEFS



Size: XXS, XS, S, M, L  
86% polyamide, 14% elastane.  
● Skin ● Black

## DS 3017N SEAMLESS BODY



Size: XXS, XS, S, M, L  
86% polyamide, 14% elastane.  
● Skin ● Black

## DA 306PRN SEAMLESS TOP



Size: 9-10 Y, 10-11 Y, 12-13 Y, XXS, XS  
86% polyamide, 14% elastane.  
● Skin ● Black

## DA 309PRN SEAMLESS TOP



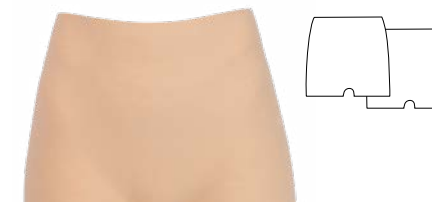
Size: 9-10 Y, 10-11 Y, 12-13 Y, XXS, XS  
86% polyamide, 14% elastane.  
● Skin ● Black

## DA 307PRN LOW RISE SEAMLESS SHORTS



Size: 9-10 Y, 10-11 Y, 12-13 Y, XXS, XS  
86% polyamide, 14% elastane.  
● Skin ● Black

## DA 308PRN SEAMLESS SHORTS



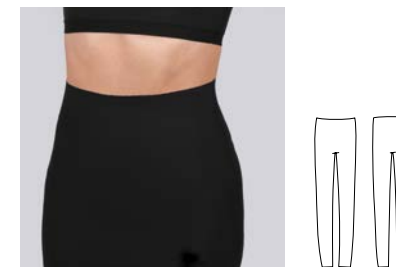
Size: 9-10 Y, 10-11 Y, 12-13 Y, XXS, XS  
86% polyamide, 14% elastane.  
● Skin ● Black

## DA 305PRN SEAMLESS UNITARD



Size: XXS, XS, S, M, L, XL, XXL.  
**DAD305PRN**  
Size: 4 Y, 6 Y, 8 Y, 10 Y, 12 Y  
86% polyamide, 14% elastane.  
● Skin ● Black

## DA 304PRN LEGGINGS



Size: XXS, XS, S, M, L, XL, XXL  
86% polyamide, 14% elastane.  
● Skin ● Black



MESH SEAMED CONVERTIBLE TIGHTS

Exclusive knit tights. Real back seam.  
Comfortable under arch opening.  
Microfiber waistband.

0054/0N

Size: S, M, L  
90% nylon, 10% spandex.  
● Ballet Pink



FOOTED MICROFIBER TIGHTS

Microfiber footed tights.  
Microfiber Knit-in waistband.  
Made in Italy with highest quality threads  
and elastane.

0050N

Youth size: 000, 00, 0  
Adult size: S, M, L, XL  
82% microfiber, 18% elastane.  
● Light Pink    ○ White    ● Black  
● Theatrical Pink    ● Light Toast  
● Classic Light Toast    ● Dark Nude (Coffee)



CONVERTIBLE MICROFIBER TIGHTS

Microfiber convertible tights. Comfortable  
generous opening under the arch.  
Microfiber Knit-in waistband.  
Made in Italy with highest quality threads  
and elastane.

0050/0N

Youth size: 000, 00, 0  
Adult size: S, M, L, XL  
82% microfiber, 18% elastane.  
● Light Pink    ○ White    ● Black  
● Theatrical Pink    ● Light Toast  
● Classic Light Toast    ● Dark Nude (Coffee)



PROFESSIONAL FISHNETS FULL FOOT

Full foot professional fishnet tights. Foot  
bed is soft and comfortable. The knit is long  
lasting and strong.  
  
Made in Italy

0065N

Size: XS/S, M/L, L/XL  
82% microfiber, 18% elastane.  
● Light Toast    ● Black    ● Brown







# Celine

Pull-on skirt

A classic faux wrap pull-on skirt. Gorgeous lines, longer drop on back. microfiber waistband.



**YOUTH SIZES**  
**DAD2035N Little Celine**

Size: 10-11 Y, 12-13 Y

**ADULT SIZES**  
**DA2035N Celine**

Size: XXS, XS, S, M, L, XL  
Material: 93% polyamide, 7% elastane.  
Color:

- Black
- Alchemy
- Midnight Sky



# Anya

Pull-on skirt

Our best selling skirt. Pull-on style with elegant slits on sides.



**YOUTH SIZES**  
**DAD2034MN Little Anya**  
Size: 10-11 Y, 12-13 Y

**ADULT SIZES**  
**DA2034MN Anya**  
Size: XXS, XS, S, M, L, XL  
Material: 80% polyamide micro, 20% elastane.  
Color:

- Wonder Blue
- Powder Blue
- Midnight Sky
- Illusion
- Alchemy
- Pebble
- Giza
- Survivor
- Black



# Ingrid

Pull-on skirt

Classic pull-on skirt with fashion print. All Italian materials. Scoop back.



**YOUTH SIZES**  
**DAD2036/1N Little Ingrid**

Size: 10-11 Y, 12-13 Y

**ADULT SIZES**  
**DA2036/1N Ingrid**

Size: XXS, XS, S, M, L, XL  
Material: 84% polyamide, 16% elastane.  
Color:

- Irises

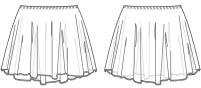




Echo

Mesh skirt

A new take on an old favorite, Italian four-way stretch mesh pull-on skirt. Hemless skirt is made for an easy length adjustment. Longer on back for a classic line.



YOUTH SIZES

DAD2005N Little Echo

Size: 5-6 Y, 6-7 Y, 8-9 Y, 9-10 Y, 10-11 Y, 12-13 Y

ADULT SIZES

DA2005N Echo

Size: XXS, XS, S, M, L, XL

Material: 93% polyamide, 7% elastane.

Color:

- |             |            |       |
|-------------|------------|-------|
| Ice Blue    | Light Navy | Lilac |
| Light Blue  | Royal Blue | Pink  |
| French Blue | Lavender   | Red   |
| Bordeaux    | Olive      | Black |
| Coffee      | White      |       |



Eden

Mesh skirt with ties

A classic wrap skirt with stretch waistband, length can be adjusted on any size: due to no hem edging. High quality Italian stretch mesh will not run when cut.



YOUTH SIZES

DAD2006N Little Eden

Size: 5-6 Y, 6-7 Y, 8-9 Y, 9-10 Y, 10-11 Y, 12-13 Y

ADULT SIZES

DA2006N Eden

Size: XXS, XS, S, M, L, XL

Material: 93% polyamide, 7% elastane.

Color:

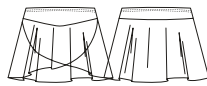
- |             |            |       |
|-------------|------------|-------|
| Ice Blue    | Light Navy | Lilac |
| Light Blue  | Royal Blue | Pink  |
| French Blue | Lavender   | Red   |
| Bordeaux    | Olive      | Black |
| Coffee      | White      |       |



Celine

Pull-on skirt

Mesh skirt with wide waistband. Faux wrap pull-on skirt.



YOUTH SIZES

DAD1945N Little Celine

Size: 8-9 Y, 9-10 Y, 10-11 Y, 12-13 Y

ADULT SIZES

DA1945N Celine

Size: XXS, XS, S, M, L, XL

Material: Belt: 80% polyamide micro, 20% elastane.,

Skirt: 93% polyamide, 7% elastane.

Length: 13"

Color:

- |          |              |            |
|----------|--------------|------------|
| Pink     | Olive        | Royal Blue |
| Red      | Coffee       | White      |
| Lilac    | Black        | Light Navy |
| Ice Blue | Medium Taupe |            |



Calyssa

Folk and character skirt

Long two-layer skirt with soft gathers was made by order of Vaganova Academy for character and folk dance. Wide waistband can be worn on waist or hips. Under-layer of soft tulle creates an airy look and feel.



YOUTH SIZES

DAD1478N Little Calyssa

Size: 8-9 Y, 9-10 Y, 10-11 Y, 12-13 Y

ADULT SIZES

DA1478N Calyssa

Size: XXS, XS, S, M, L, XL

Material: 93% polyamide, 7% elastane.

Size: 8-9 Y — 13,8", Size: 9-10 Y — 15,75",

Size: 11-13 Y — 17,7", Size: XXS — 19,7",

Size: XS-XL — 21,65"

Color:

- |       |            |              |
|-------|------------|--------------|
| White | Royal Blue | Light Blue   |
| Pink  | Coffee     | Ice Blue     |
| Lilac | Black      | Medium Taupe |

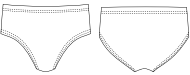




# Little Carson

Trunks

Boy's trunk. Made in the greatest tradition of Russian ballet uniform for boys.



**DAD1495CN Little Carson**

Size: 5-6 Y, 6-7 Y, 8-9 Y, 9-10 Y, 10-11 Y, 12-13 Y

Material: 90% cotton, 10% elastane.

Color:

- Black

**DAD1495MN Little Carson**

Size: 4-5 Y, 6-7 Y, 8-9 Y, 9-10 Y, 10-11 Y, 12-13 Y

Material: 80% polyamide, 20% elastane.

Color:

- Black
- Dark Grey



# Little Caden

Bodysuit

Boy's bodysuit, tank top and trunk attached. Made of stretch cotton comfortable and universal for uniforming.



**DAD109CN Little Caden**

Size: 5-6 Y, 6-7 Y, 7-8 Y, 8-9 Y, 9-10 Y, 10-11 Y, 12-13 Y

Material: 90% cotton, 10% elastane.

Color:

- White/Black



# Caleb

Leggings

Boy's and Men's footless tights. Comfortable microfiber. featuring high waist and secure waist elastic.



**YOUTH SIZES**

**DAD1497MN Little Caleb**

Size: 10-11 Y, 12-13 Y

**ADULT SIZES**

**DA1497MNCaleb**

Size: XXS, XS, S, M, L, XL

Material: 80% polyamide micro, 20% elastane.

Color:

- Black
- Dark Grey
- Dark Blue



# Little Chase

Tank top

Boy's tank top. Made in the greatest tradition of Russian ballet uniform for boys.



**DAD1494CN Little Chase**

Size: 5-6 Y, 6-7 Y, 8-9 Y, 9-10 Y, 10-11 Y, 12-13 Y

Material: 90% cotton, 10% elastane.

Color:

- White

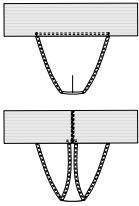




# Evan

Men’s dance belt

Men’s dancebelt at its best. Sufficient padding, comfortable elastic and perfect shape.



**DA2007CN Evan**

Size: XXS, XS, S, M, L, XL

Material: 90% cotton, 10% elastane.

Color:

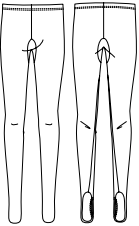
● Pale Beige



# Eric

Leggings

Men’s convertible microfiber tights. A unique pattern follows the dancers body perfectly. Convertible foot opening is comfortable and easy to wear.



**DA2008MN Eric**

Size: XXS, XS, S, M, L, XL

Material: 80% polyamide micro, 20% elastane.

Color:

● Grey

● Black

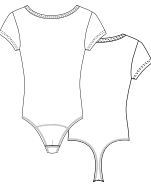
○ White



# Cadin

Bodysuit

Front bottom lined men’ short sleeve crew neck bodysuit. Featuring comfortable flat snaps under crouch for easy change.



**YOUTH SIZES**

**DAD1480CN Little Cadin**

Size: 10-11 Y, 12-13 Y

**ADULT SIZES**

**DA1480CN Cadin**

Size: XXS, XS, S, M, L, XL

Material: 90% cotton, 10% elastane.

Color:

○ White

# Cooper

Men’s Dance Belt

Men’s supportive dance belt. Seamless under tights. Comfortable and soft.



**DA1496CN Cooper**

Size: XXS, XS, S, M, L, XL

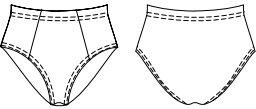
Material: 90% cotton, 10% elastane.

Color:

● Pale Beige

**BOY’S BRIEFS**

Boy’s briefs, full seat dance belt. One size. Made in Russian tradition of classic uniform style.



**DA 05CN**

Size: 5-6 Y, 6-7 Y, 8-9 Y, 9-10 Y, 10-11 Y, 12-13 Y

90% cotton, 10% elastane.

● Black



NIKOLAY® APPAREL SIZE:  
CORRESPONDENCE CHART

ADULT SIZES / LADIES							
Height	5'2"	5'4"	5'6"– 5'7"	5'6"– 5'7"	5'6"– 5'7"	5'6"– 5'7"	5'6"– 5'7"
Bust Circumference, in	30,3– 31,5	31,9– 33,1	33,5– 34,7	35– 36,2	36,6– 37,8	38,2– 39,4	41,3– 42,5
Waist Circumference, in	24– 24,4	24,8– 25,2	25,6– 26,8	27,2– 28,3	28,3– 29,5	29,2– 31,5	32,3– 33,5
Hip Circumference, in	33,9– 34,6	35,4– 36,2	36,6– 37,8	38,1– 39,4	39,8– 40,9	41,3– 42,5	44,5– 45,7
International size	XXS	XS	S	M	L	XL	XXL
Size RU	40	42	44	46	48	50	52
Size USA	0	2	4	6	8	10	12

ADULT SIZES / MEN								
Height	5'4"–5'7"		5'7"–5'9"		5'9"–6'0"		6'0"–6'1"	
Chest Circumference, in	30,3– 31,5	31,9– 33	33,5– 34,6	35– 36,2	36,6– 37,8	38,2– 39,4	39,8– 40,9	41,3– 42,5
Waist Circumference, in	24– 24,4	24,8– 25,2	25,6– 26,8	27,2– 28,3	28,3– 29,5	31,1– 32,3	32,7– 33,8	34,2– 35
Hip Circumference, in	33,8– 34,6	35,4– 36,2	36,6– 37,8	38,2– 39,4	39,8– 40,9	38,6– 39,4	39,8– 40,5	40,9– 41,7
International size	S		M		L		XL	XXL
Size RU	40	42	44	46	48	50	52	54
Size USA	0	2	4	6	8	10	12	14

YOUTH SIZES / GIRLS							
Height	3'7"	3'9"– 4'0"	4'2"	4'5"	4'7"	4'9"	5'0"
Bust Circumference, in	20,5– 21,6	22	22,4– 23,6	24– 25,2	25,6– 26,8	27,2– 28,3	28,7– 29,9
Waist Circumference, in	19,3– 20	20,5	20,9– 21,5	21,6– 22,4	22,8– 23,2	23,6	24
Hip Circumference, in	23,2	24,8	25,2– 26,8	27,2– 28,3	28,7– 30,3	30,7– 31,9	32,3– 33,5
Sizing by age	4-5 Y	5-6 Y	6-7 Y	8-9 Y	9-10 Y	10-11 Y	12-13 Y
Size RU	26	28	30	32	34	36	38

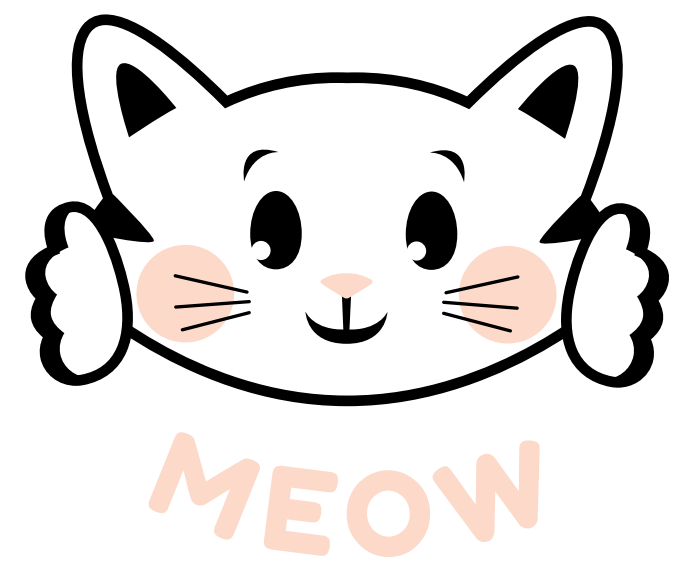
YOUTH SIZES / BOYS						
Height	3'9"–4'0"	4'2"	4'5"	4'7"	4'9"	5'0"
Bust Circumference, in	22	22,4– 23,6	24– 25,2	25,6– 26,8	27,2– 28,3	28,7– 29,9
Waist Circumference, in	20	20,9– 21,2	21,6– 22,4	22,8– 23,6	24– 24,8	25,2– 25,6
Hip Circumference, in	24	24,4– 25,6	26– 27,2	27,6– 28,7	29,1– 30,3	30,7– 32,3
Sizing by age	5-6 Y	6-7 Y	8-9 Y	9-10 Y	10-11 Y	12-13 Y
Size RU	28	30	32	34	36	38



# POLYAMIDE MICRO

80% polyamide micro,  
20% elastane.

					
White #1	Royal Blue #3	Black #4	Light Navy #5	Lavender #8	Pink #9
					
Red #10	Powder #11	Ice Blue #12	Dark Blue #16	Light Blue #18	Coffee #28
					
Lilac #30	French Blue #34	Bordeaux #35	Medium Taupe #42	Tiffany #43	Olive #44
					
Wonder Blue #45	Powder Blue #46	Midnight Sky #47	Alchemy #48	Illusion #49	Pebble #50
					
Giza #51	Survivor #52				





**NIKOLAY® HEAD OFFICE**

Proezd Zavoda Serp i Molot, 2/4

Moscow, 111250, Russia

Toll free 1-800-987-6715

orders@nikolay-world.com



[nikolay-world.com](http://nikolay-world.com)



[nikolayworld](https://www.instagram.com/nikolayworld)